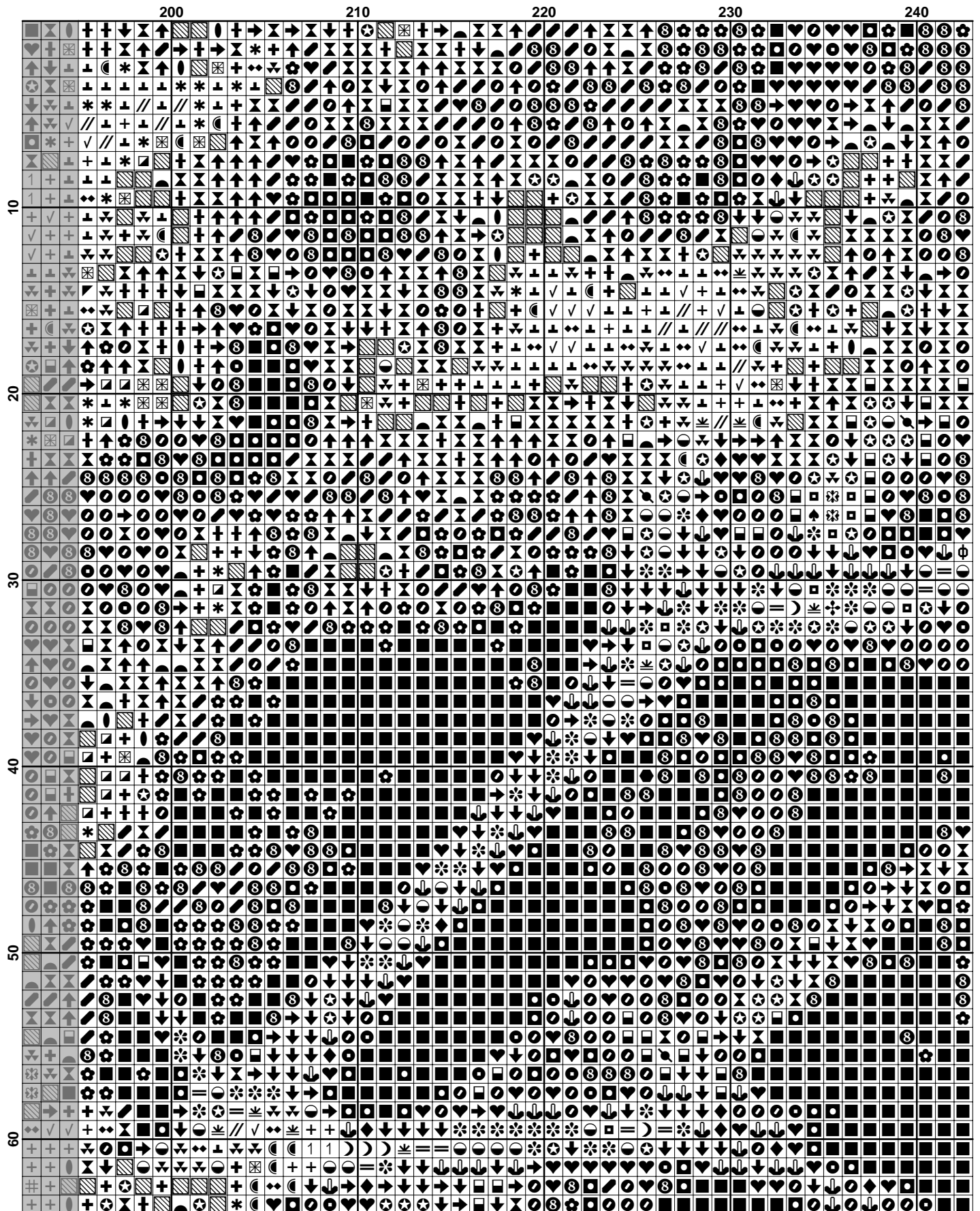
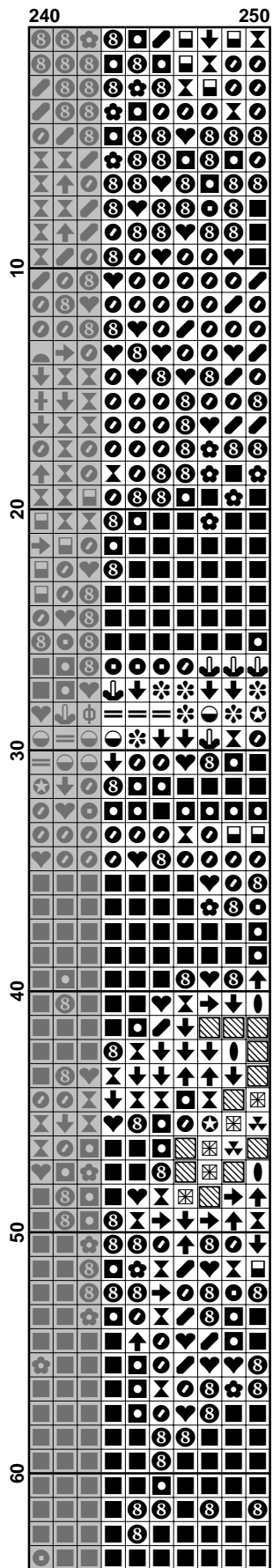
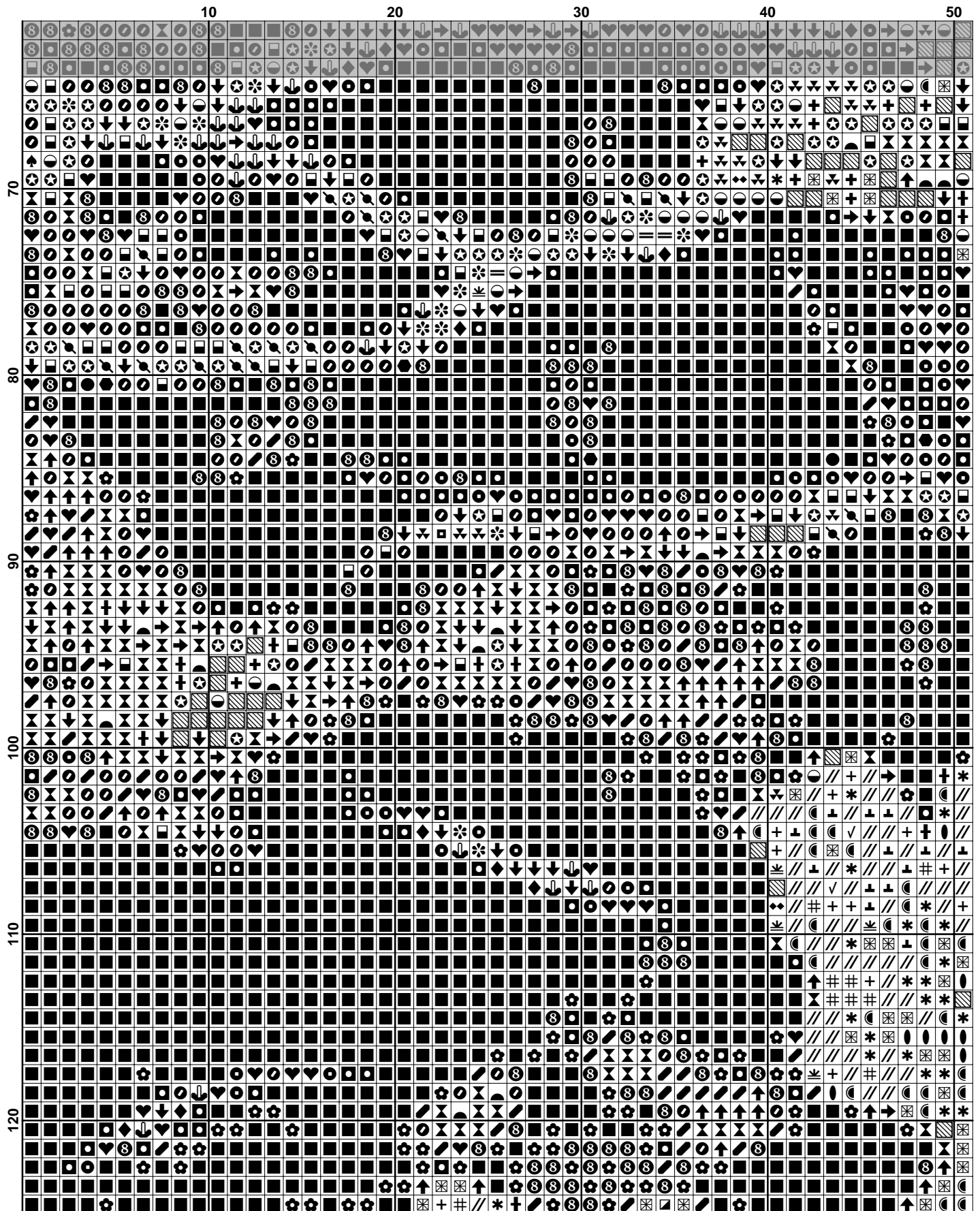
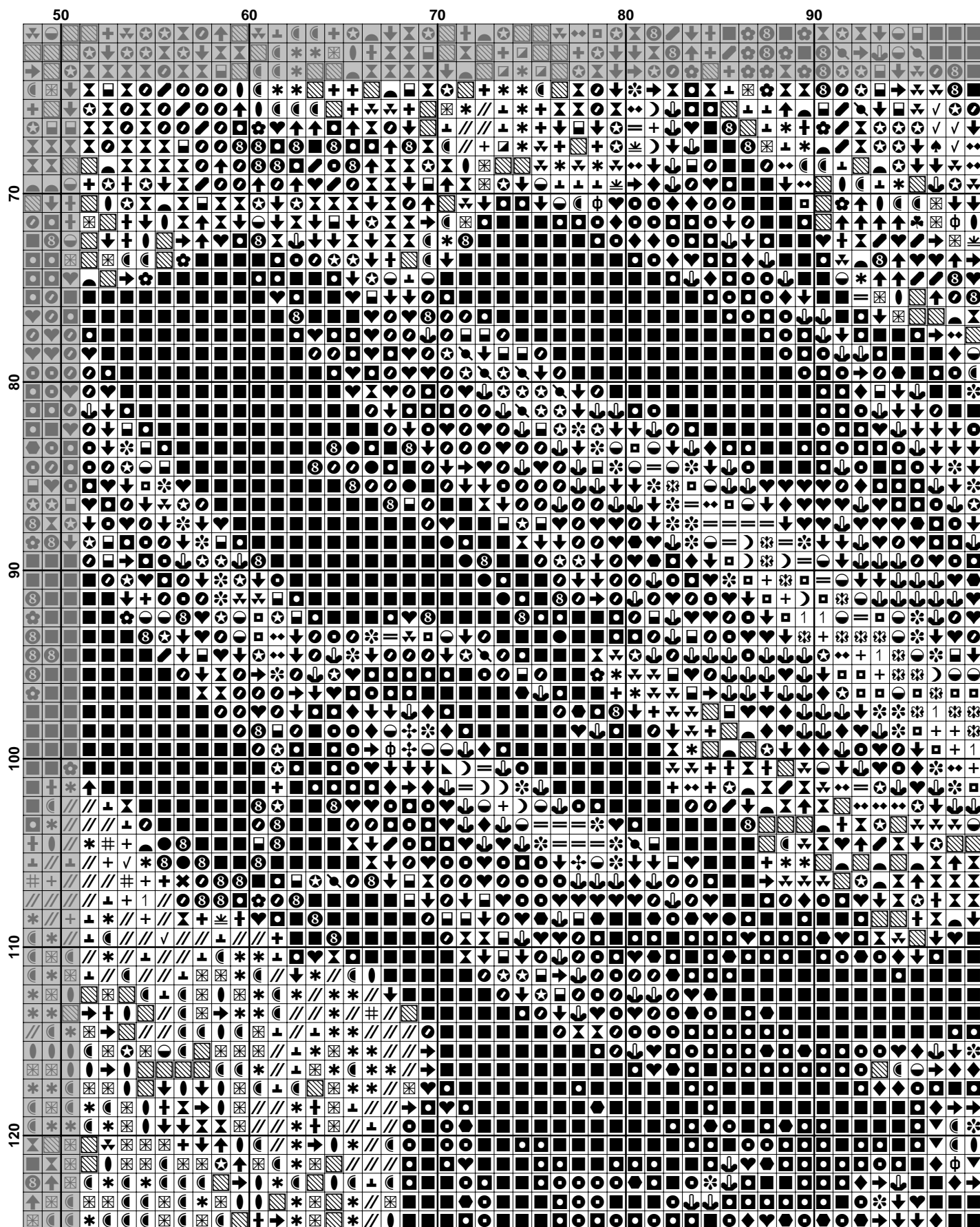


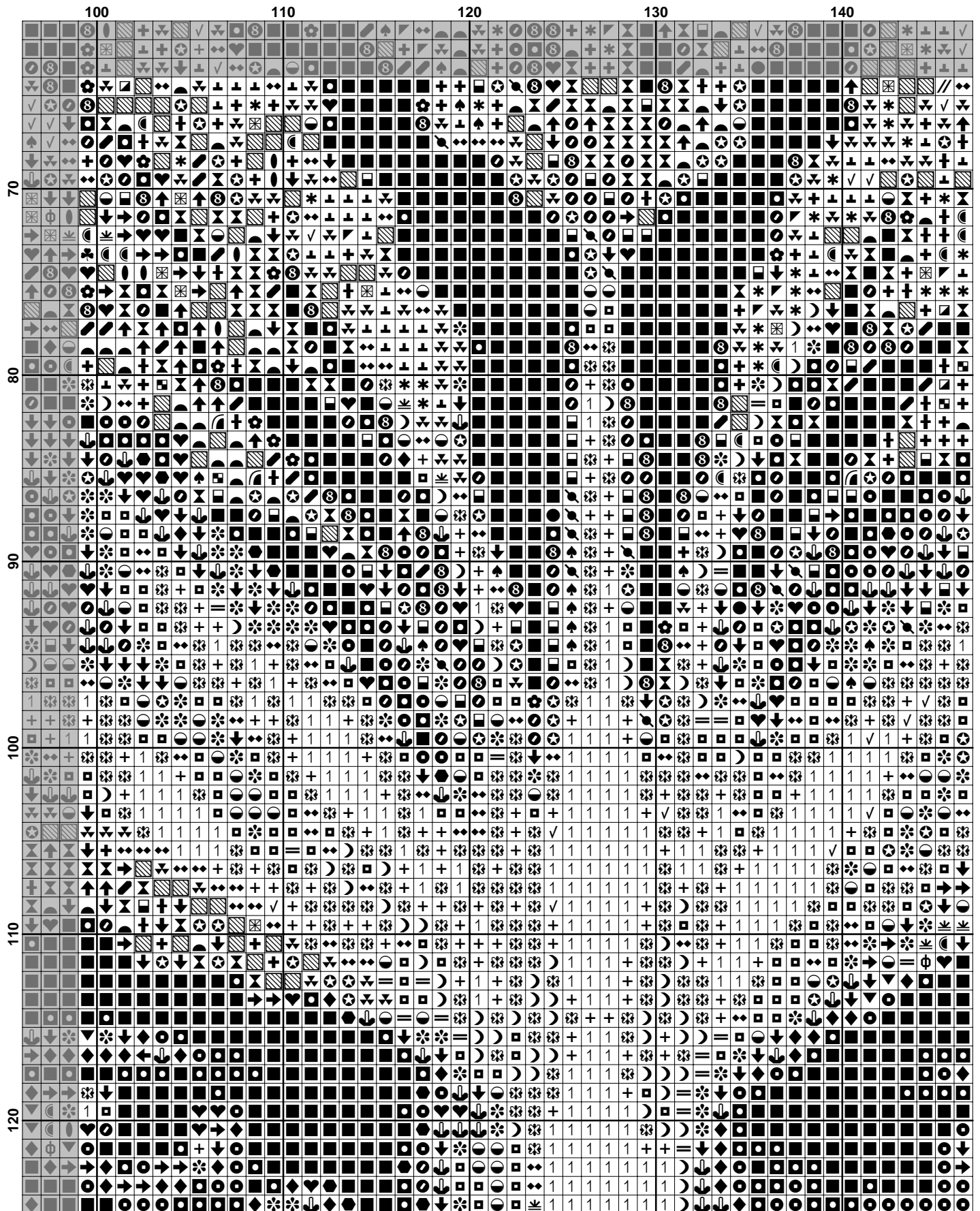
	150	160	170	180	190
10
20
30
40
50
60

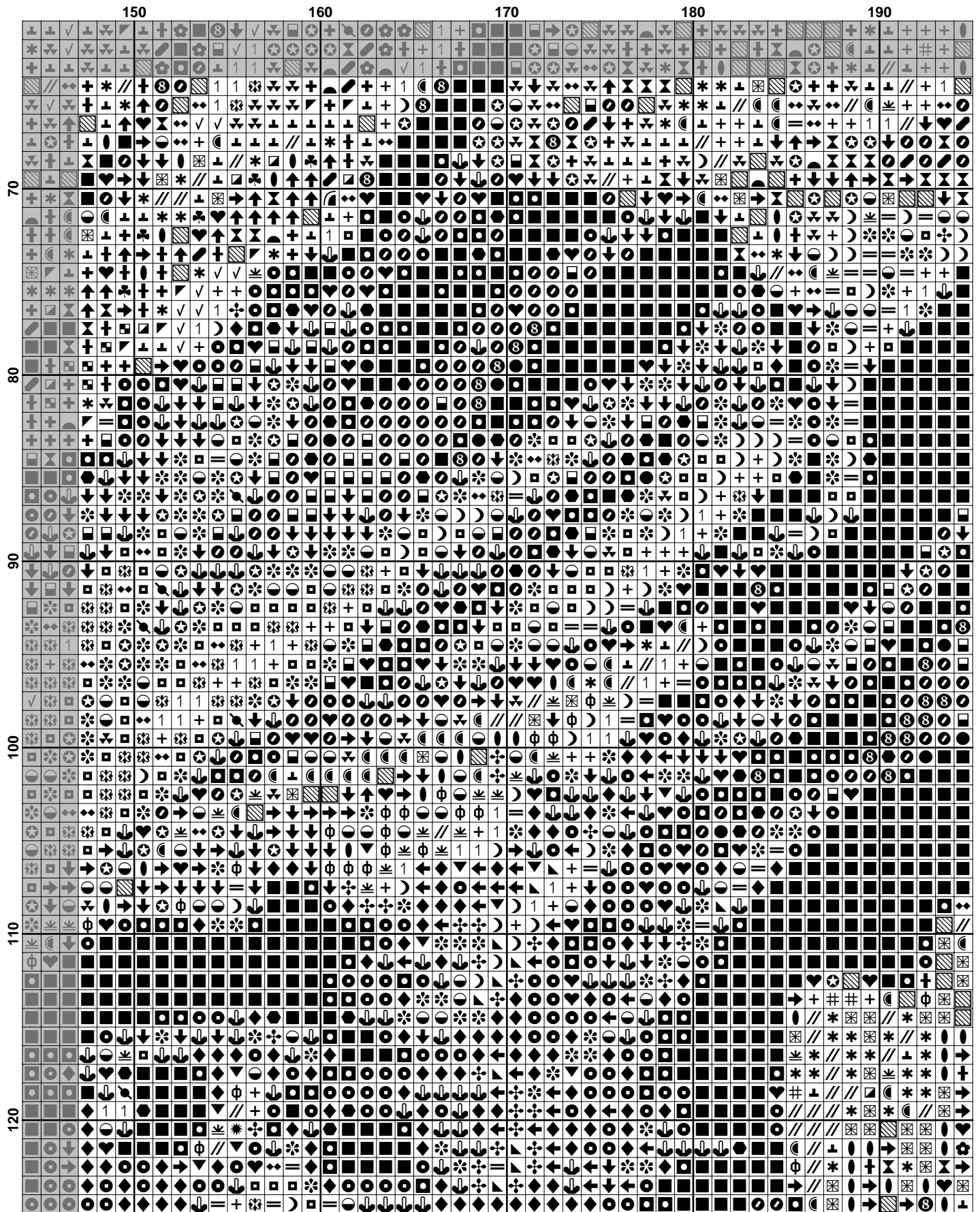


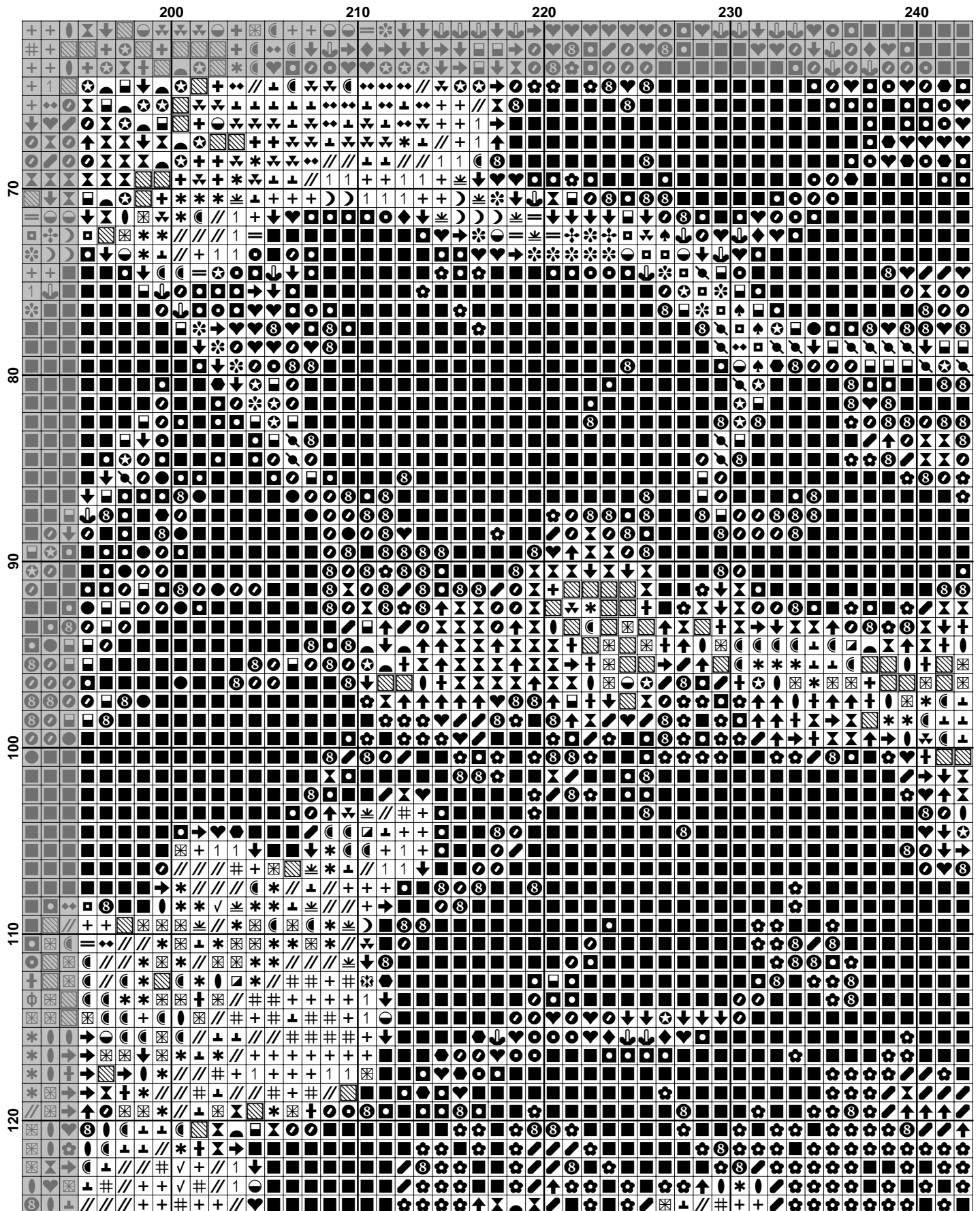


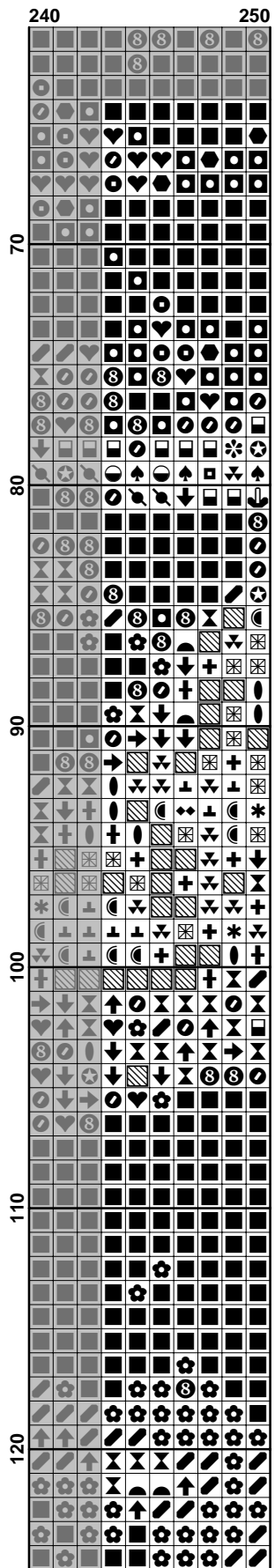


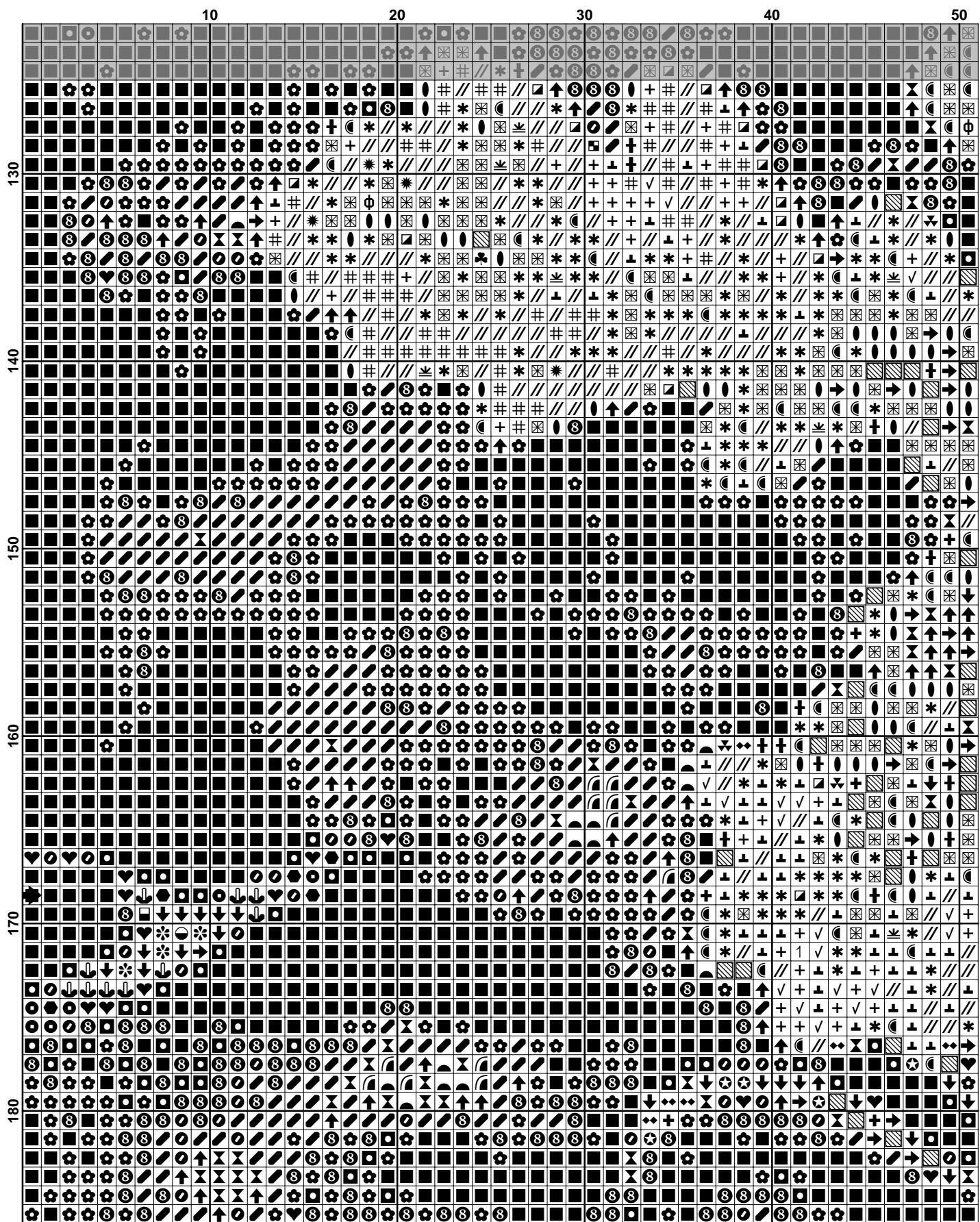


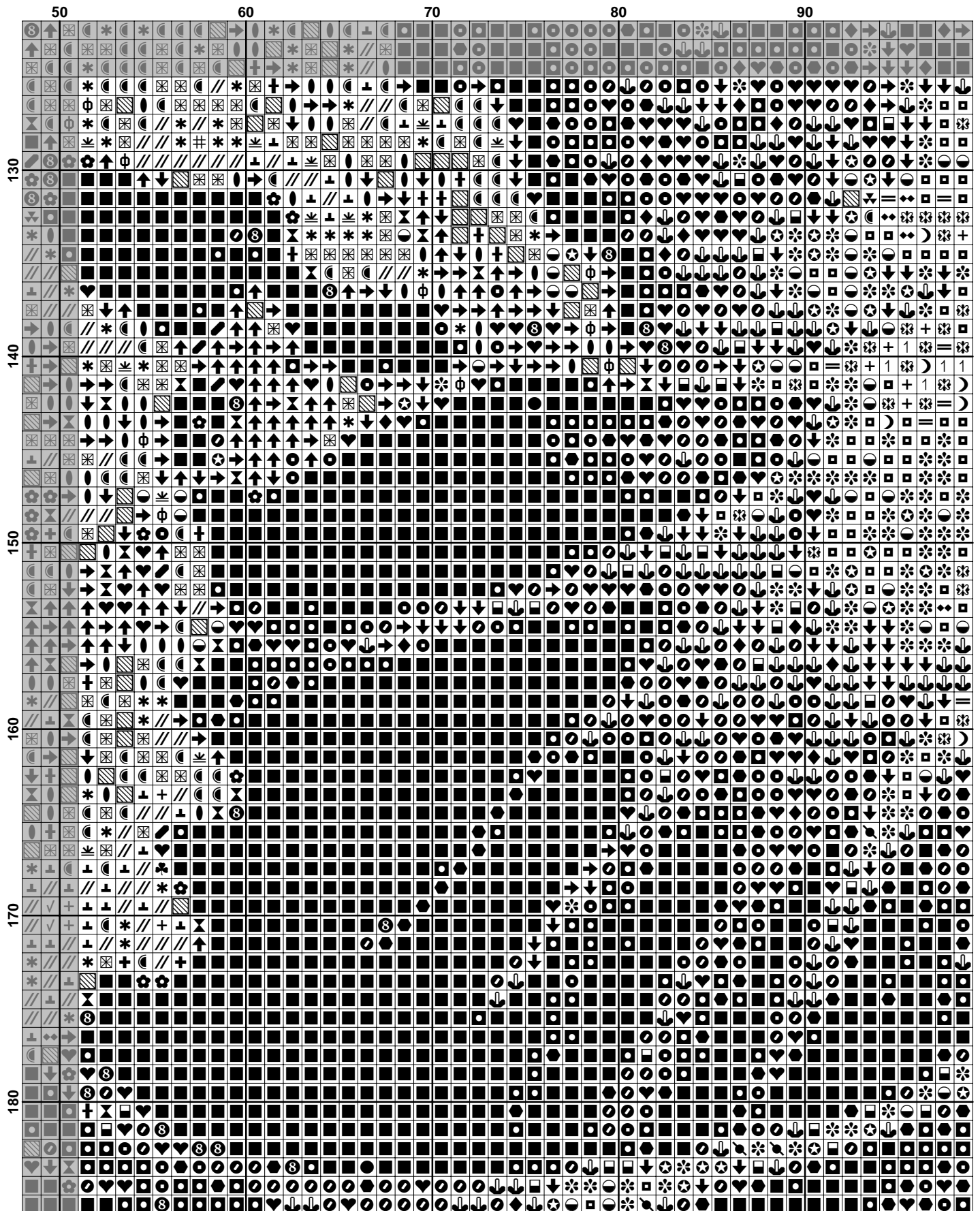












	100	110	120	130	140
130
140
150
160
170
180

150 160 170 180 190

130

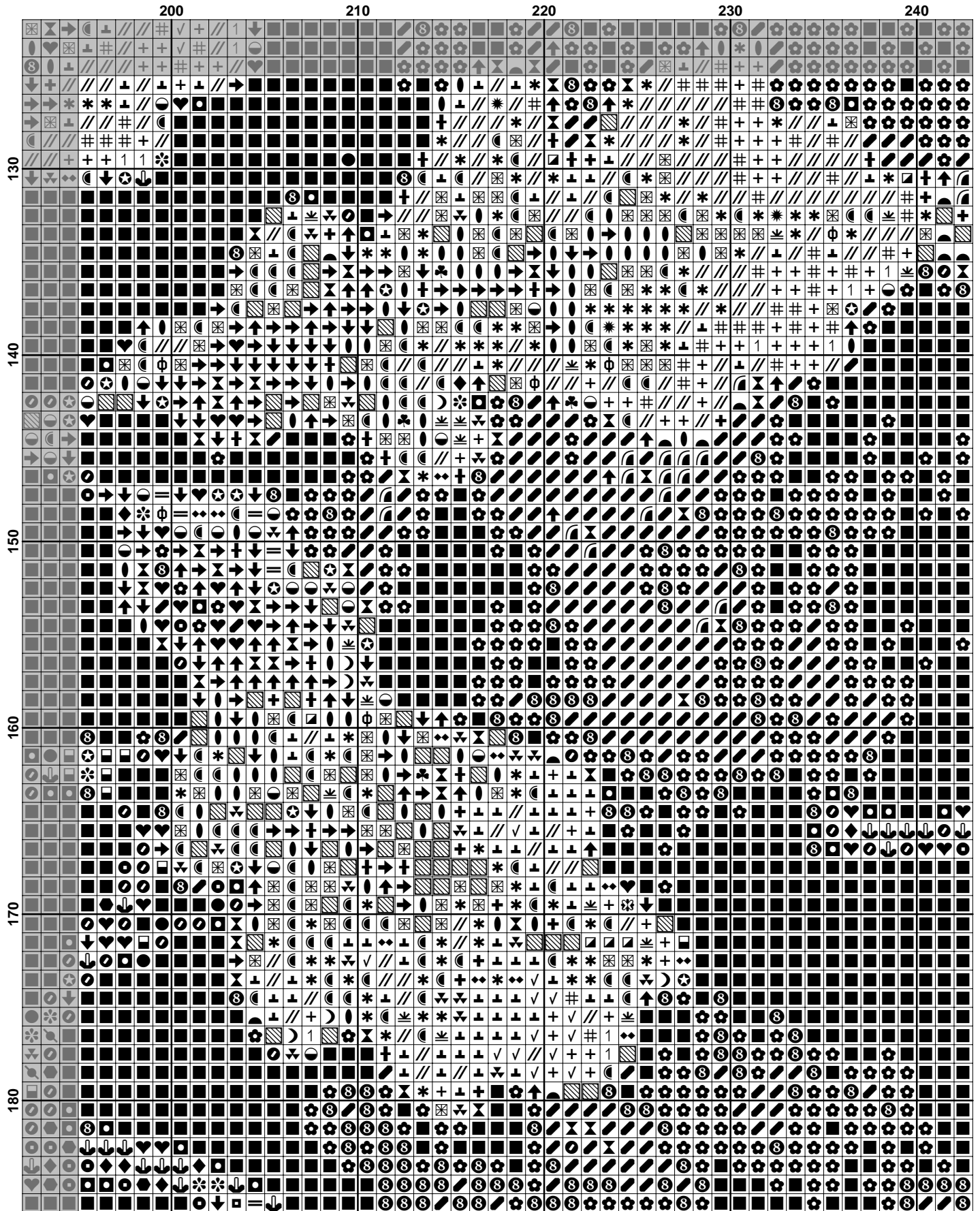
140

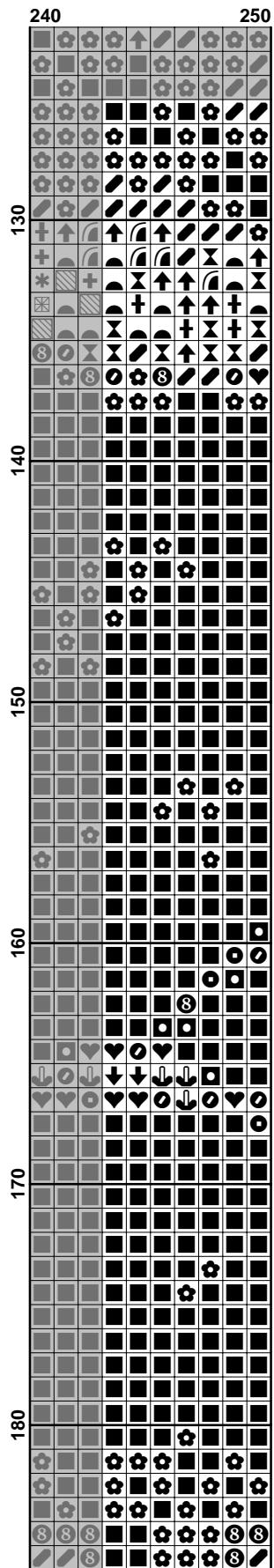
150

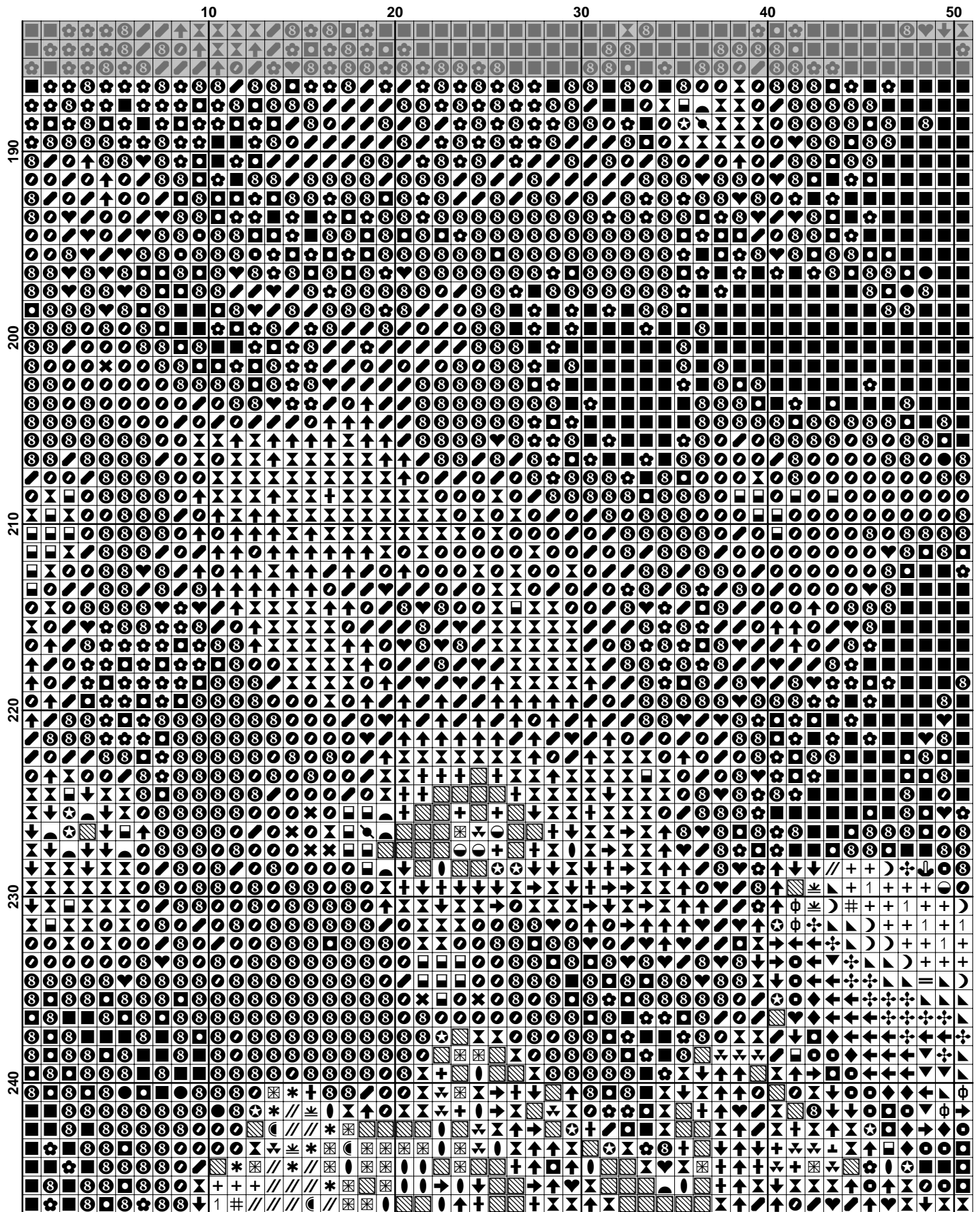
160

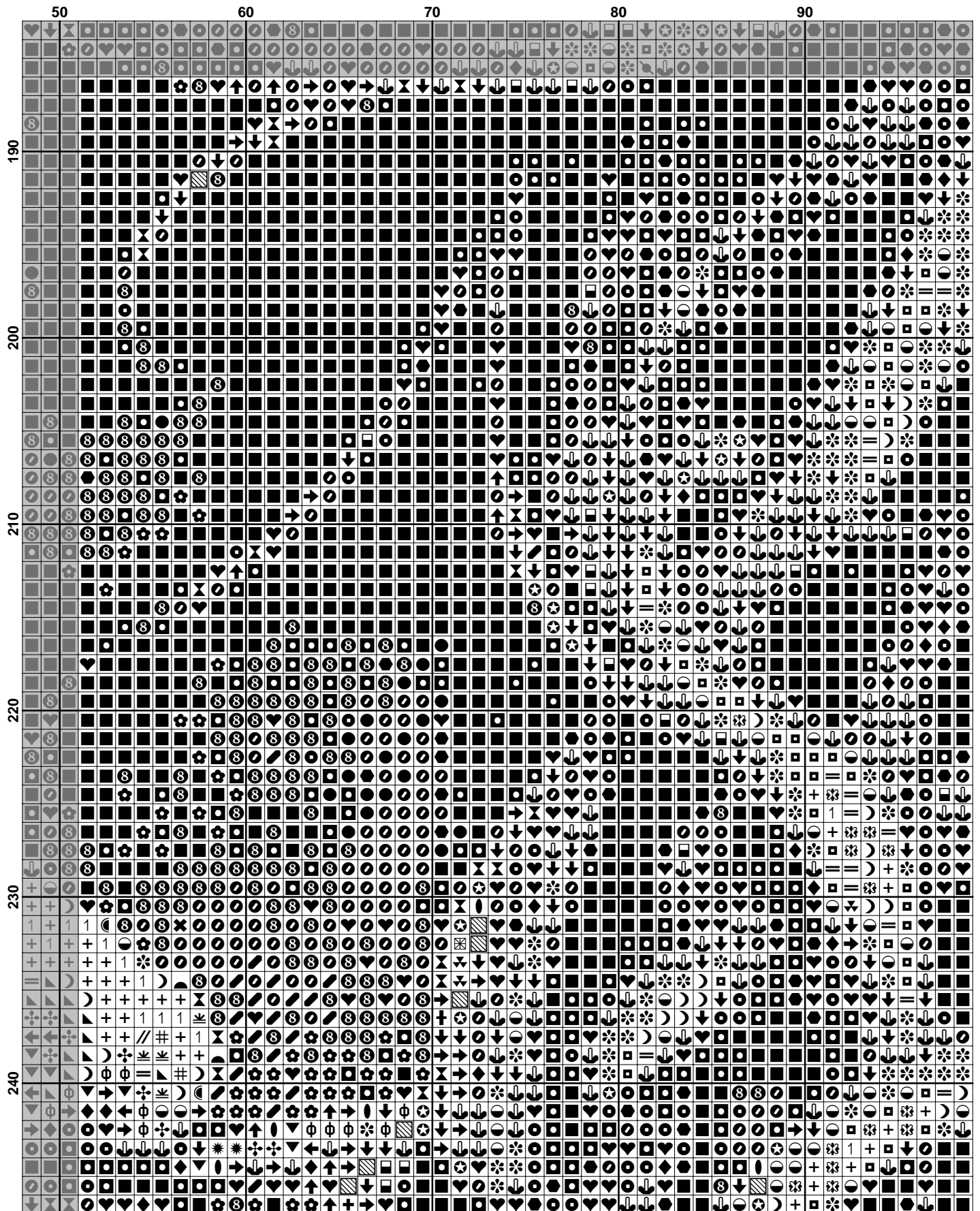
170

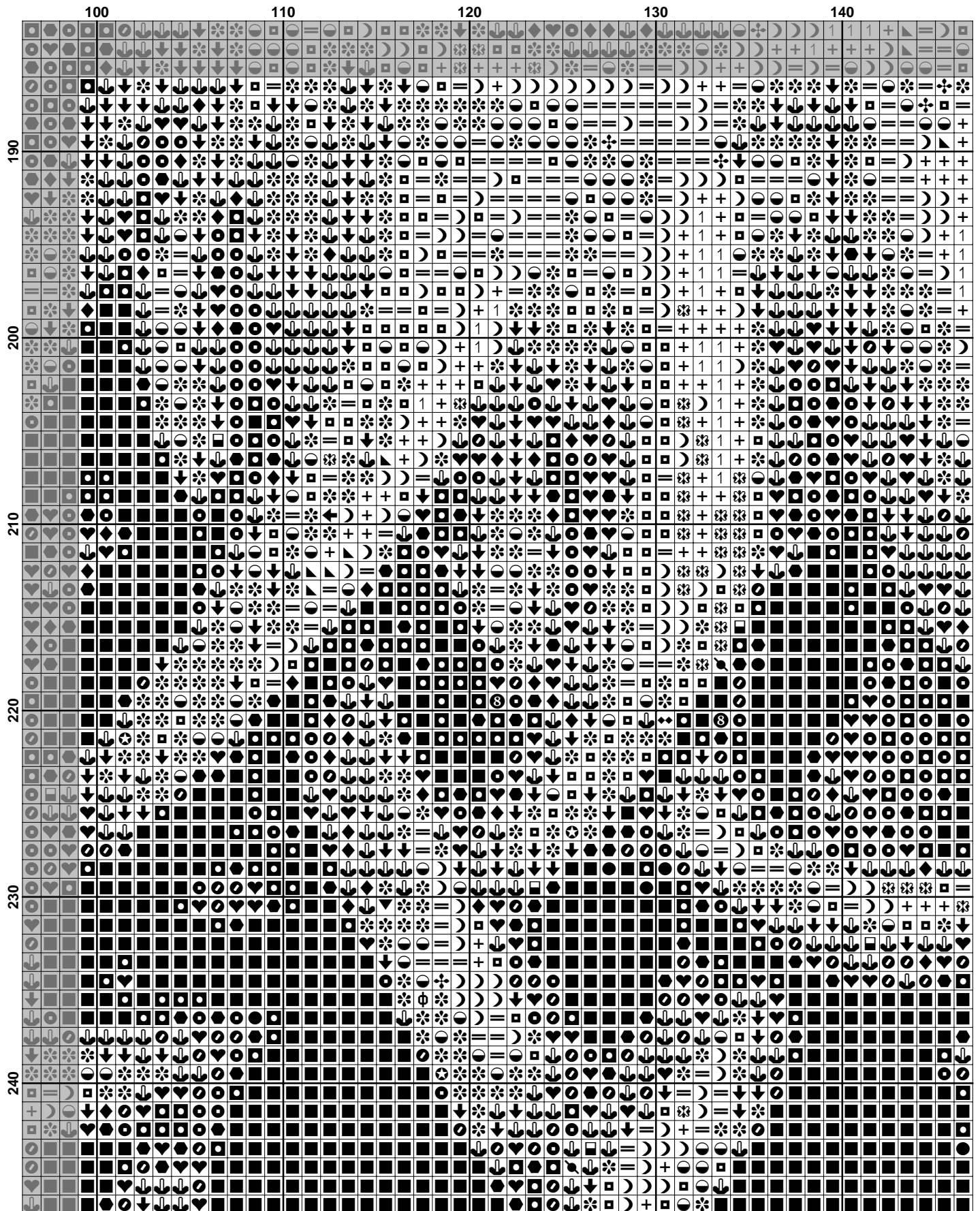
180

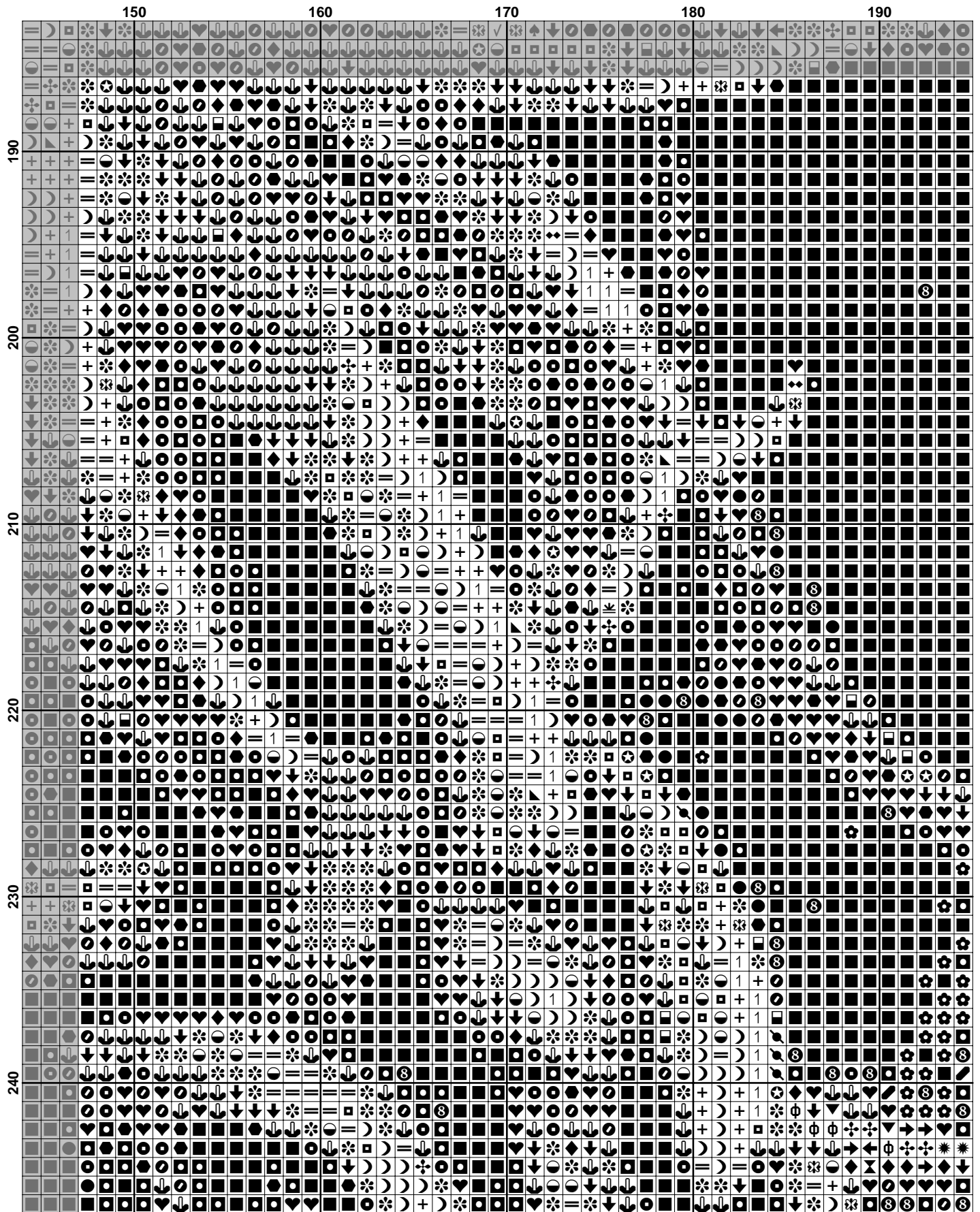


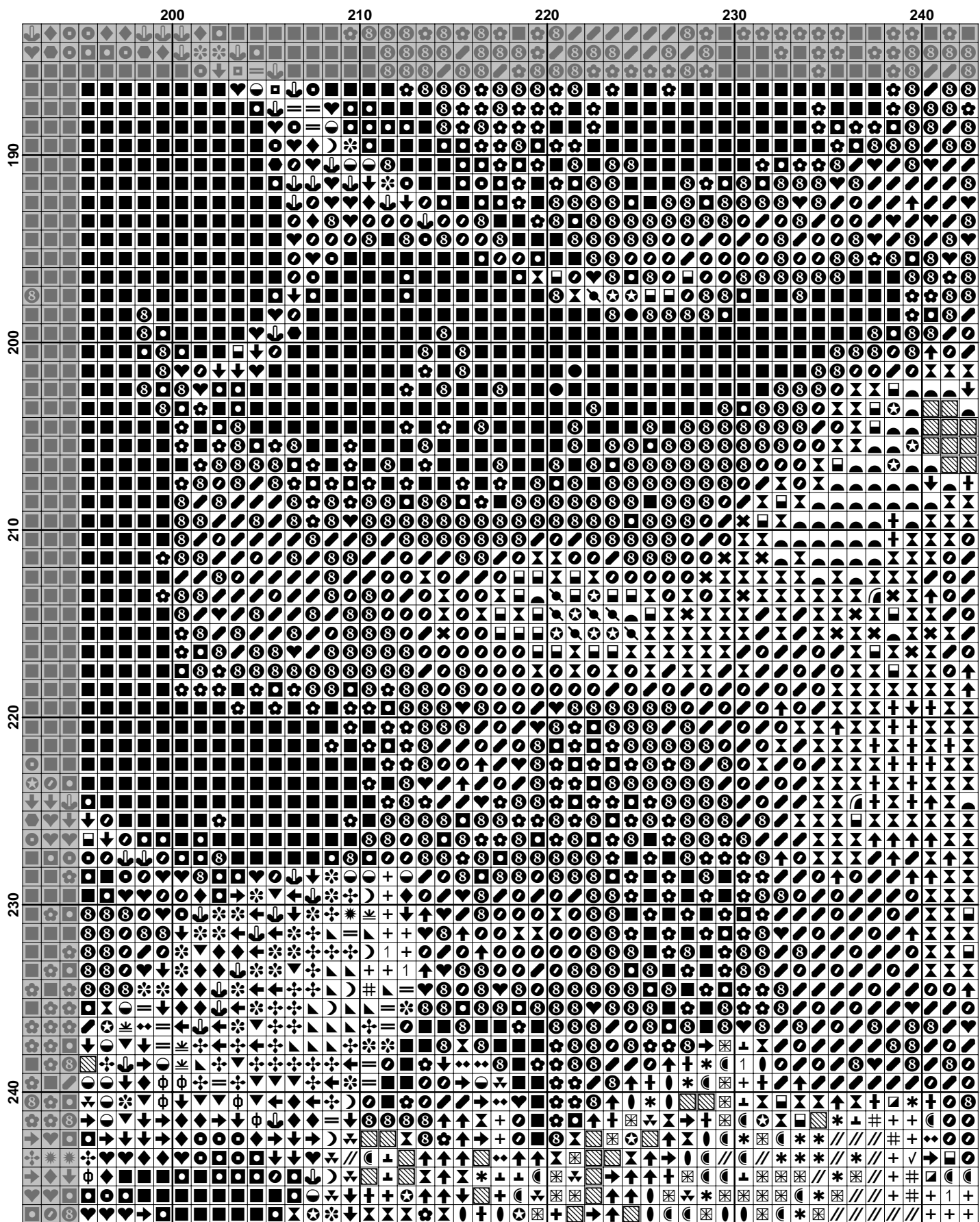


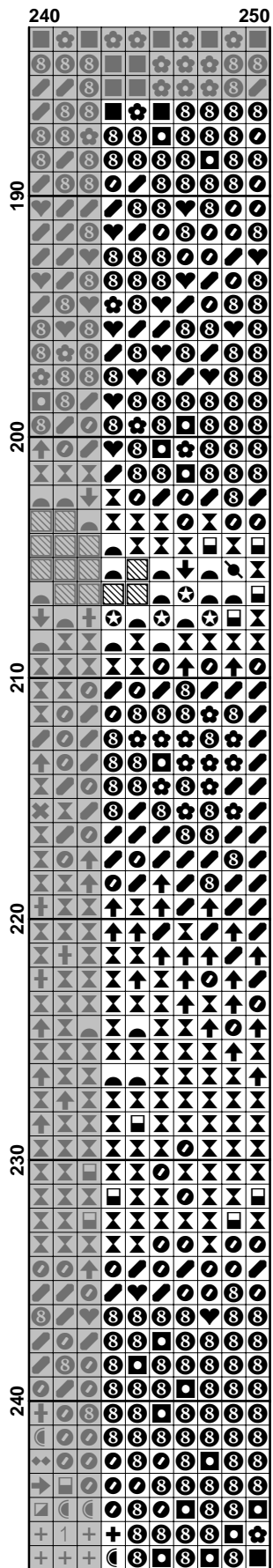


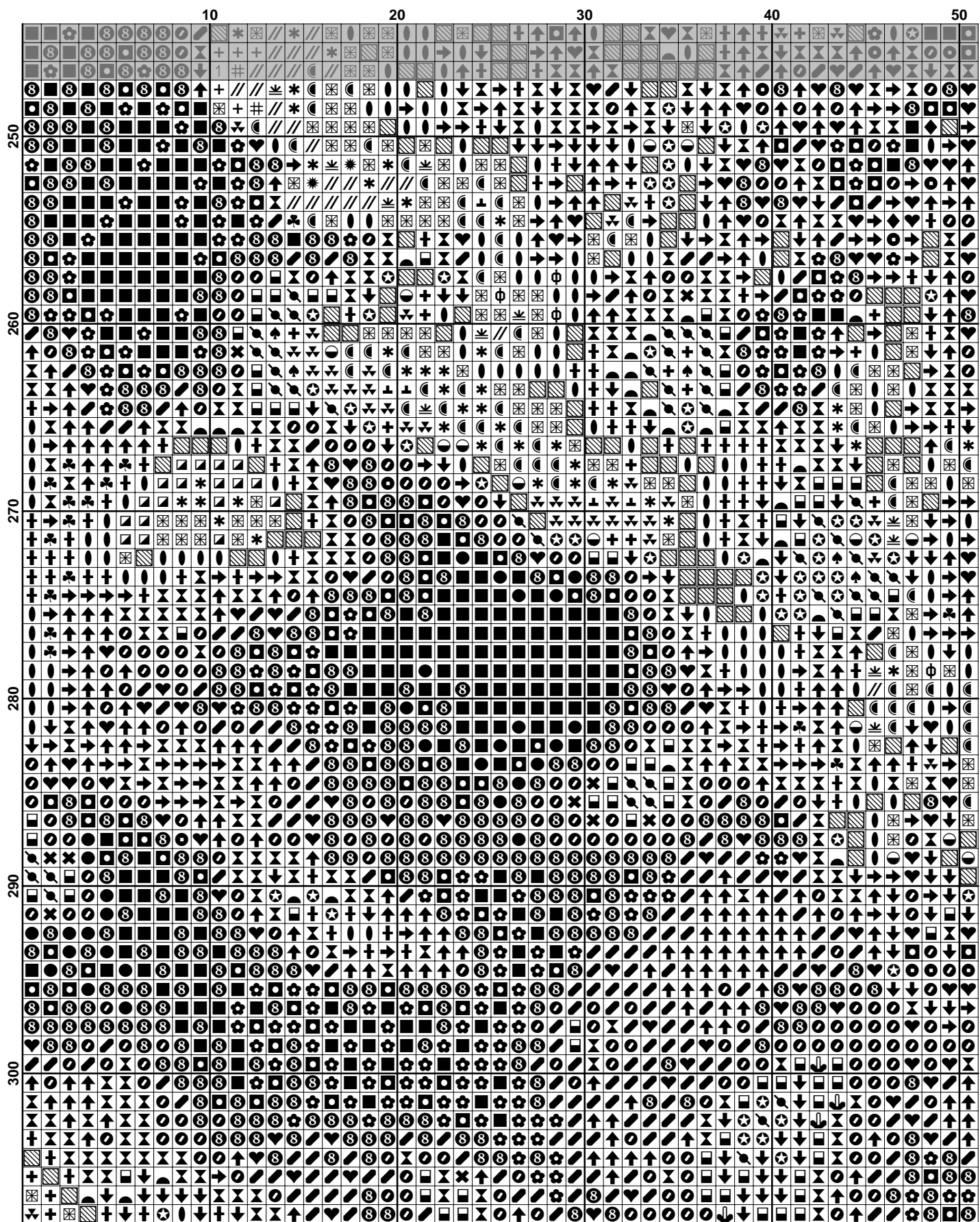


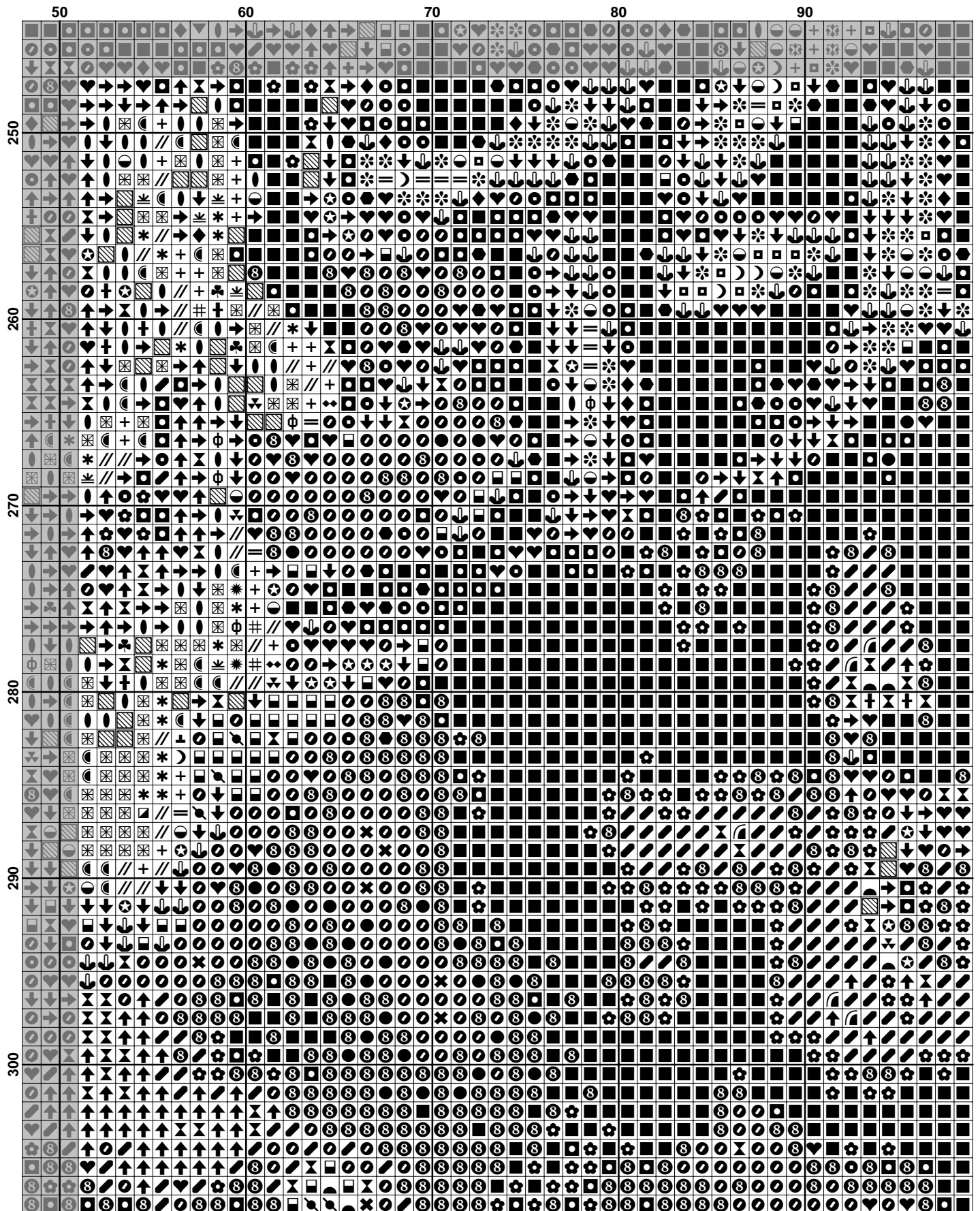


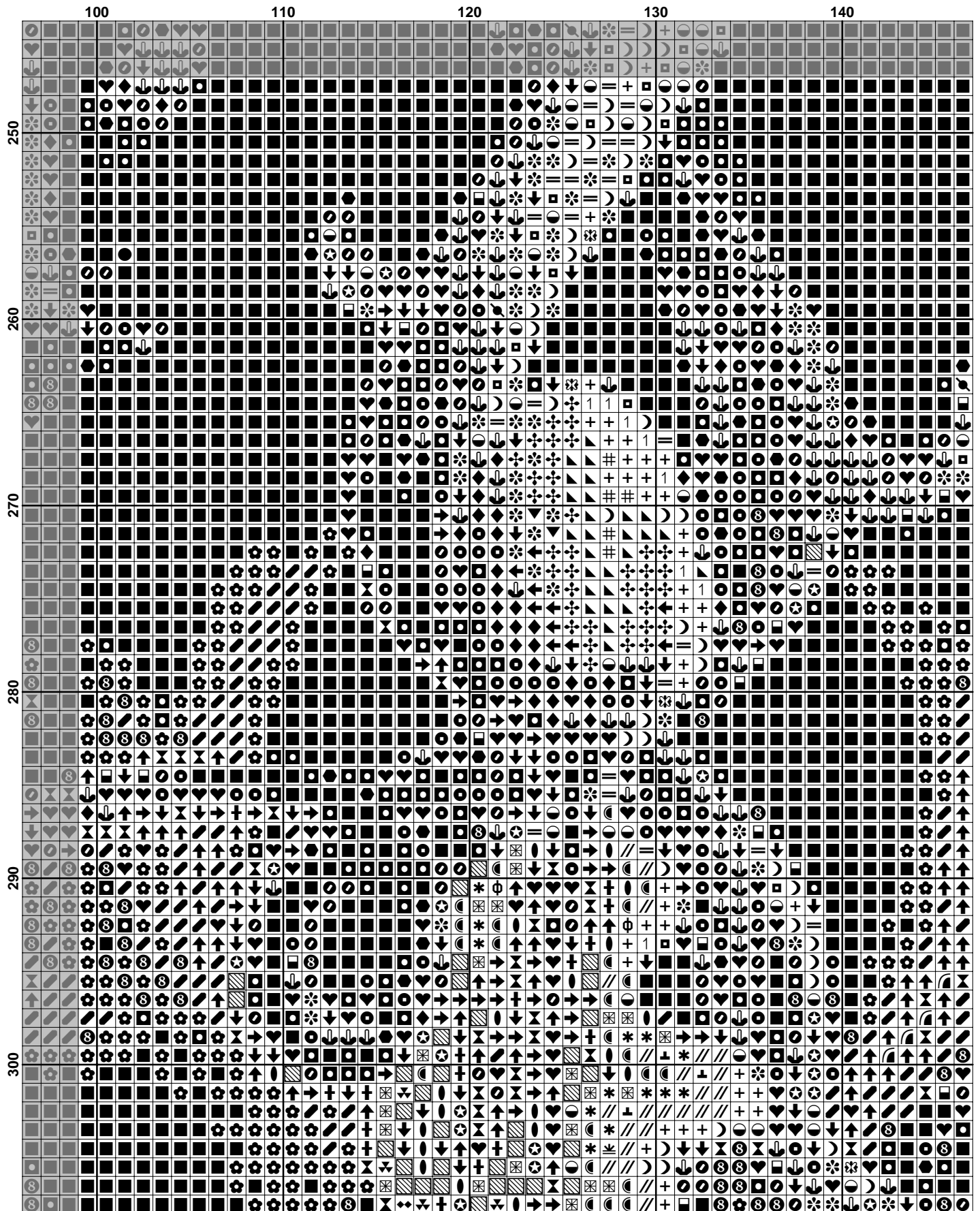


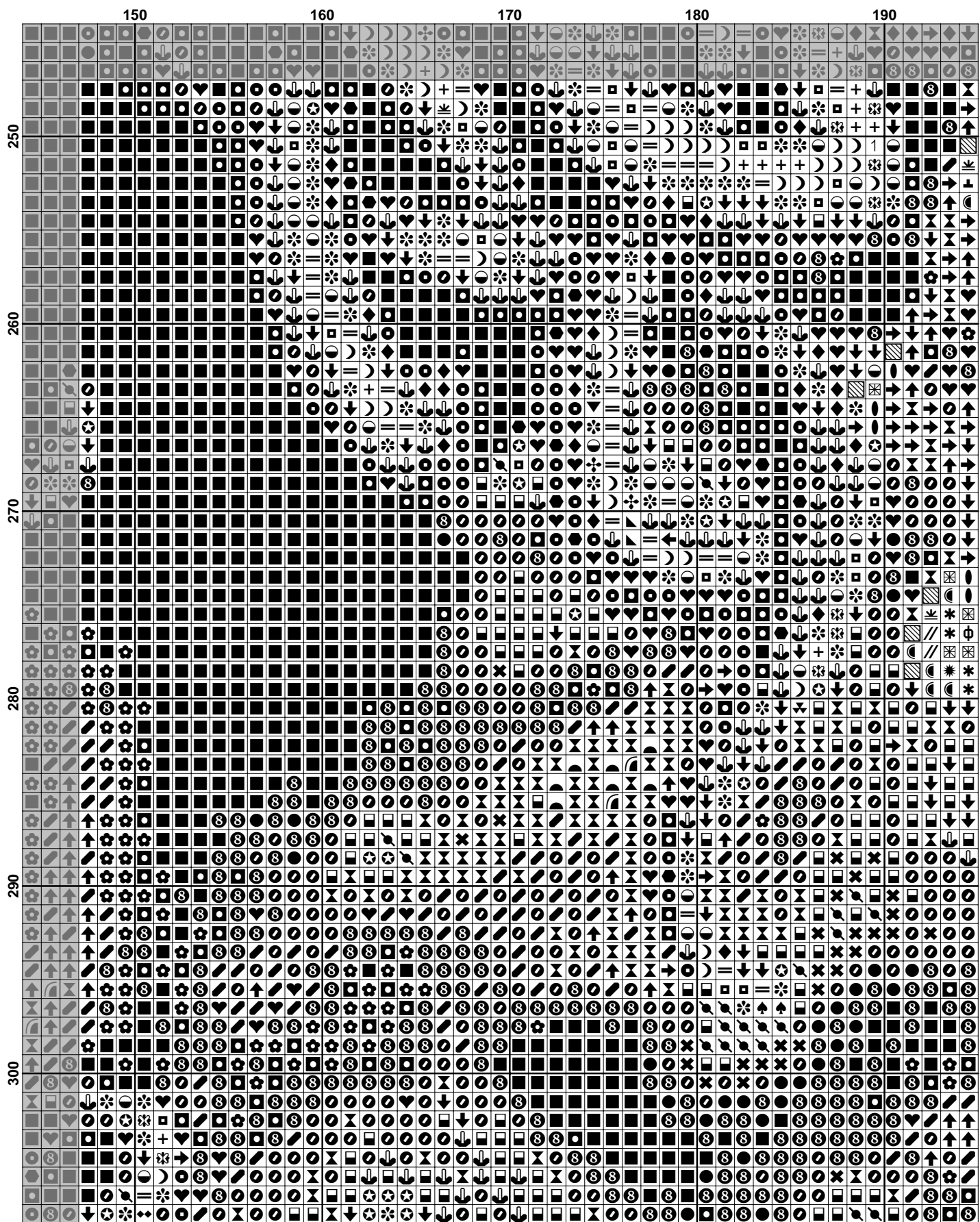


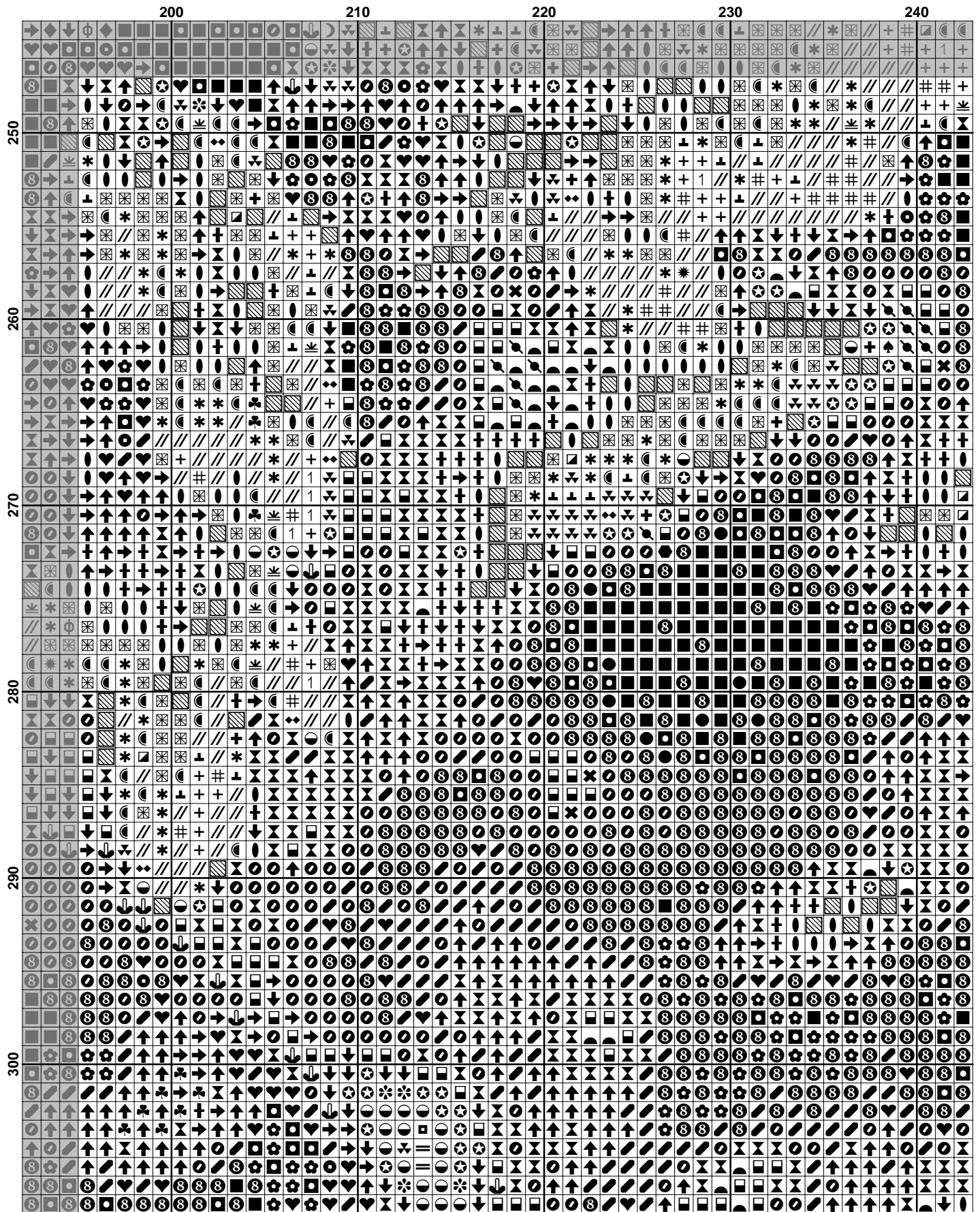


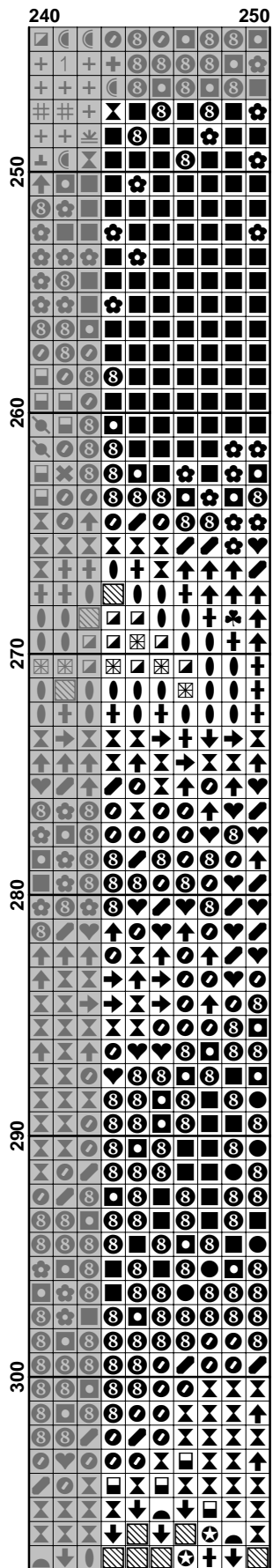


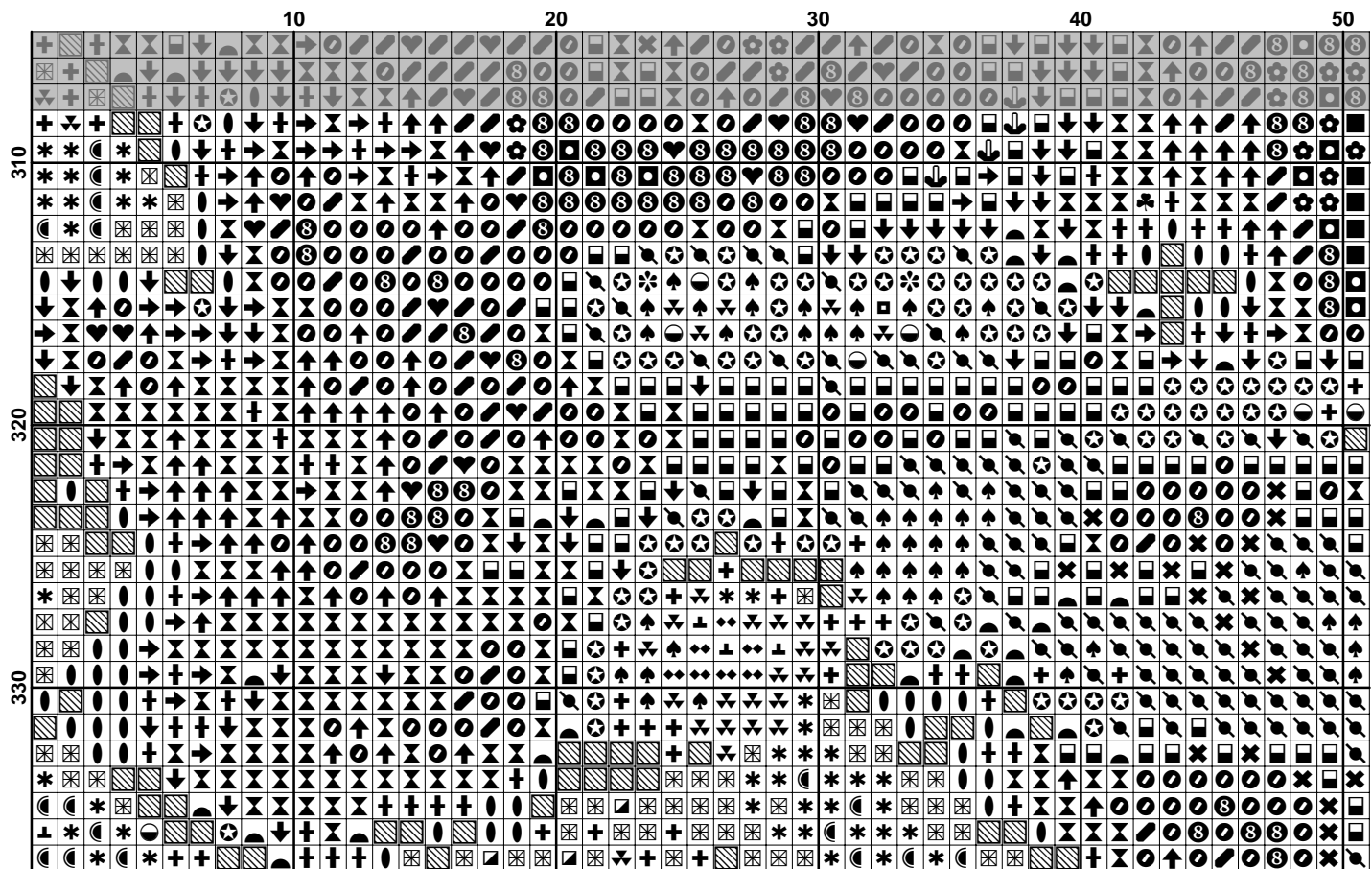


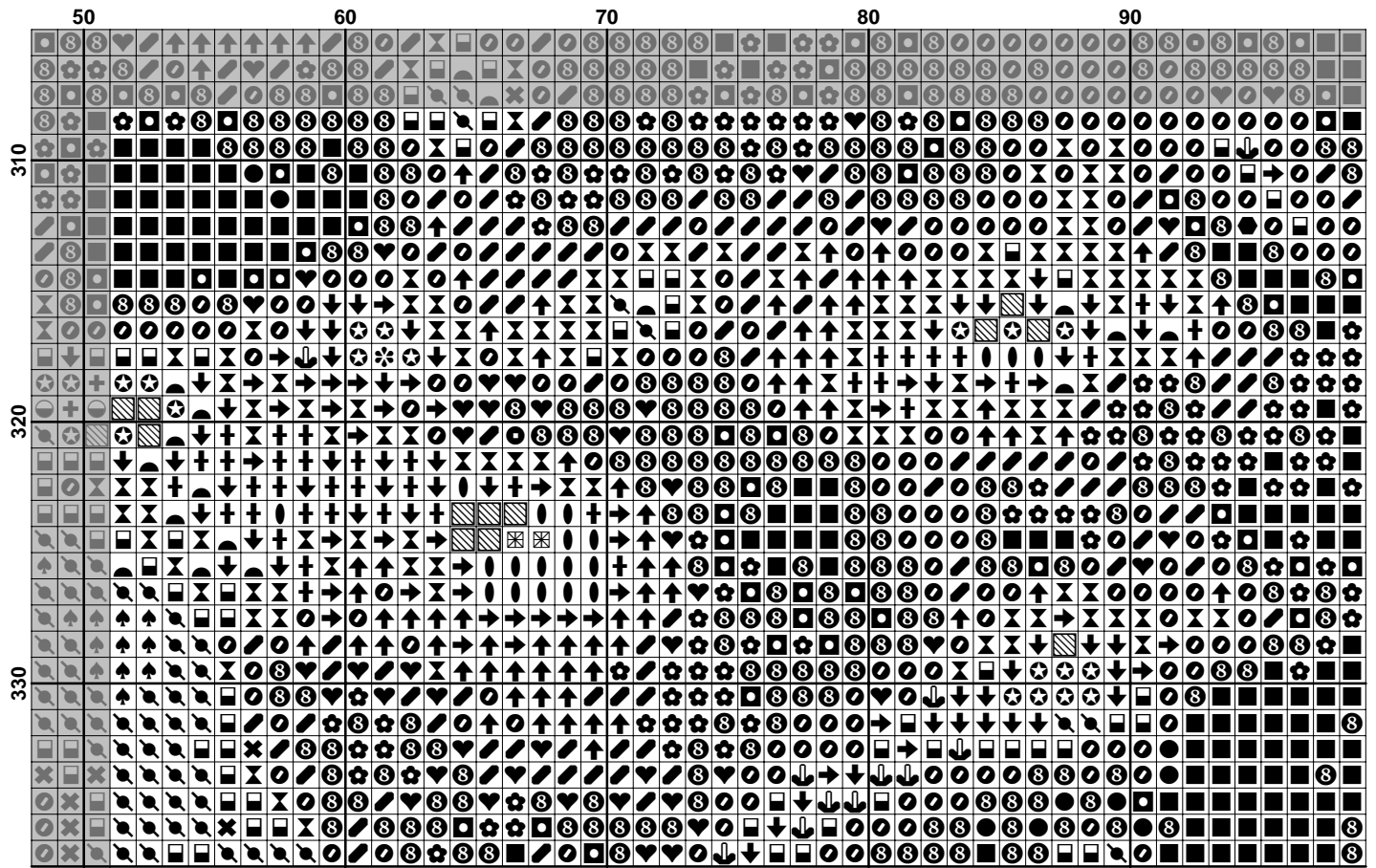


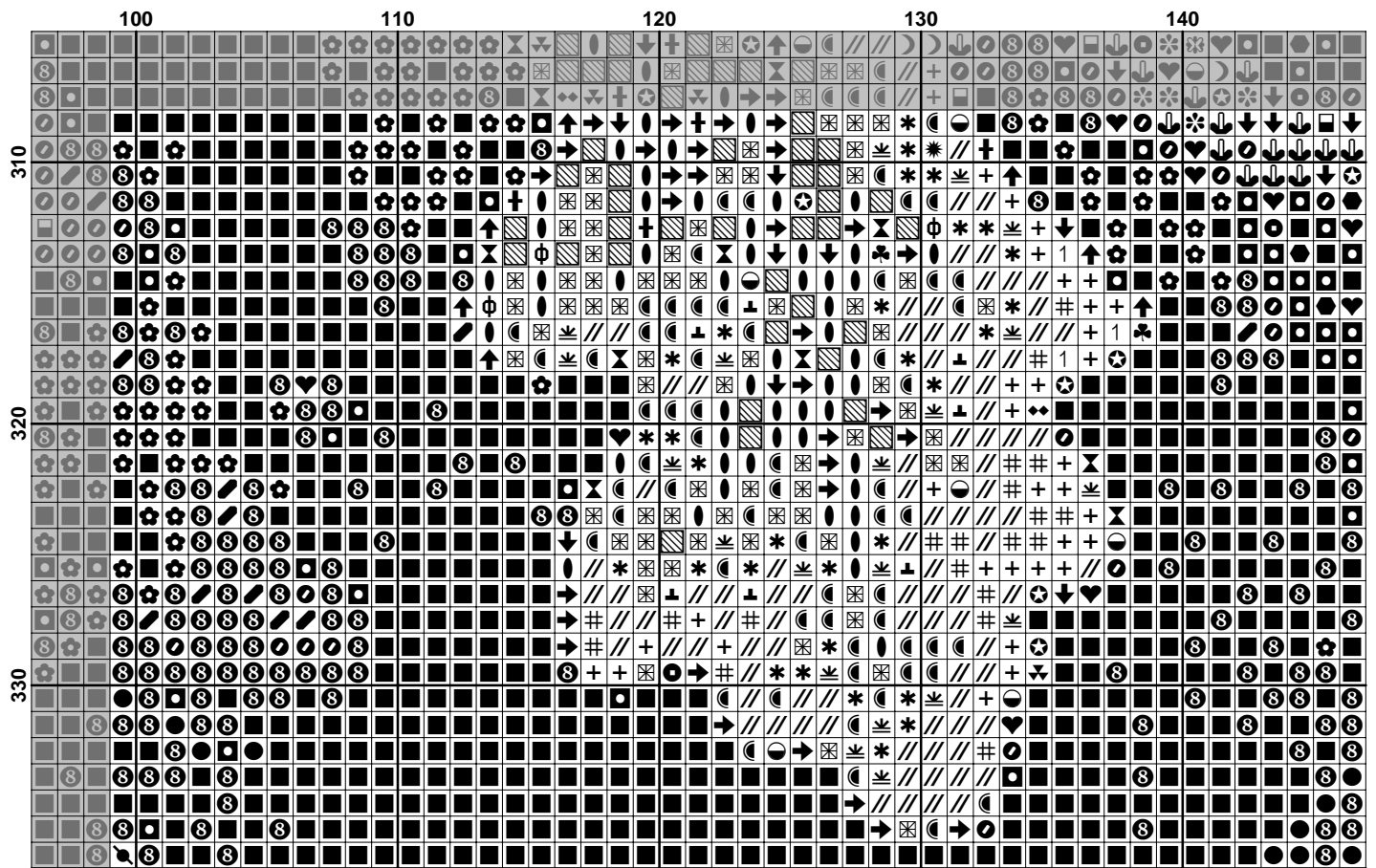


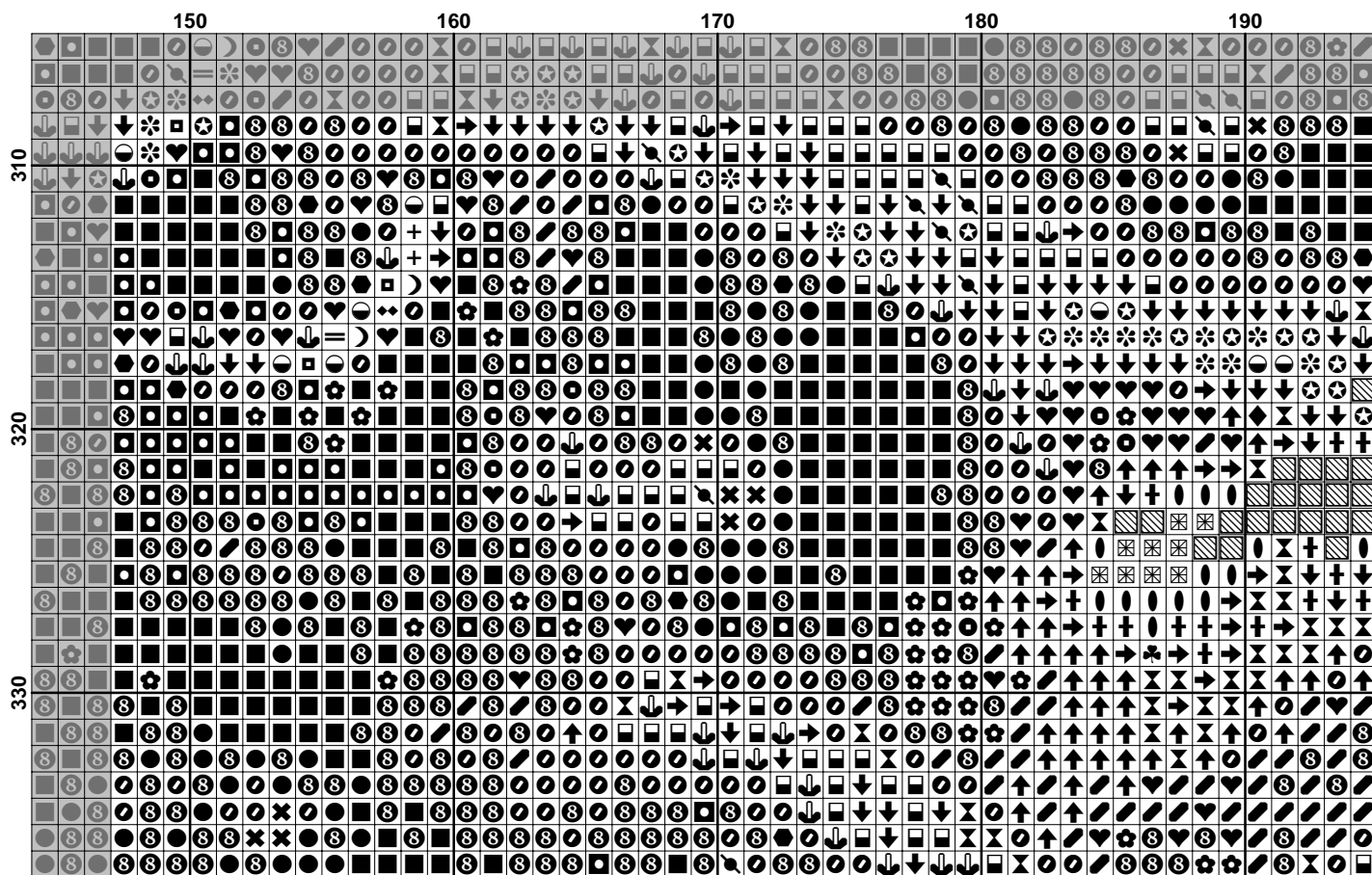


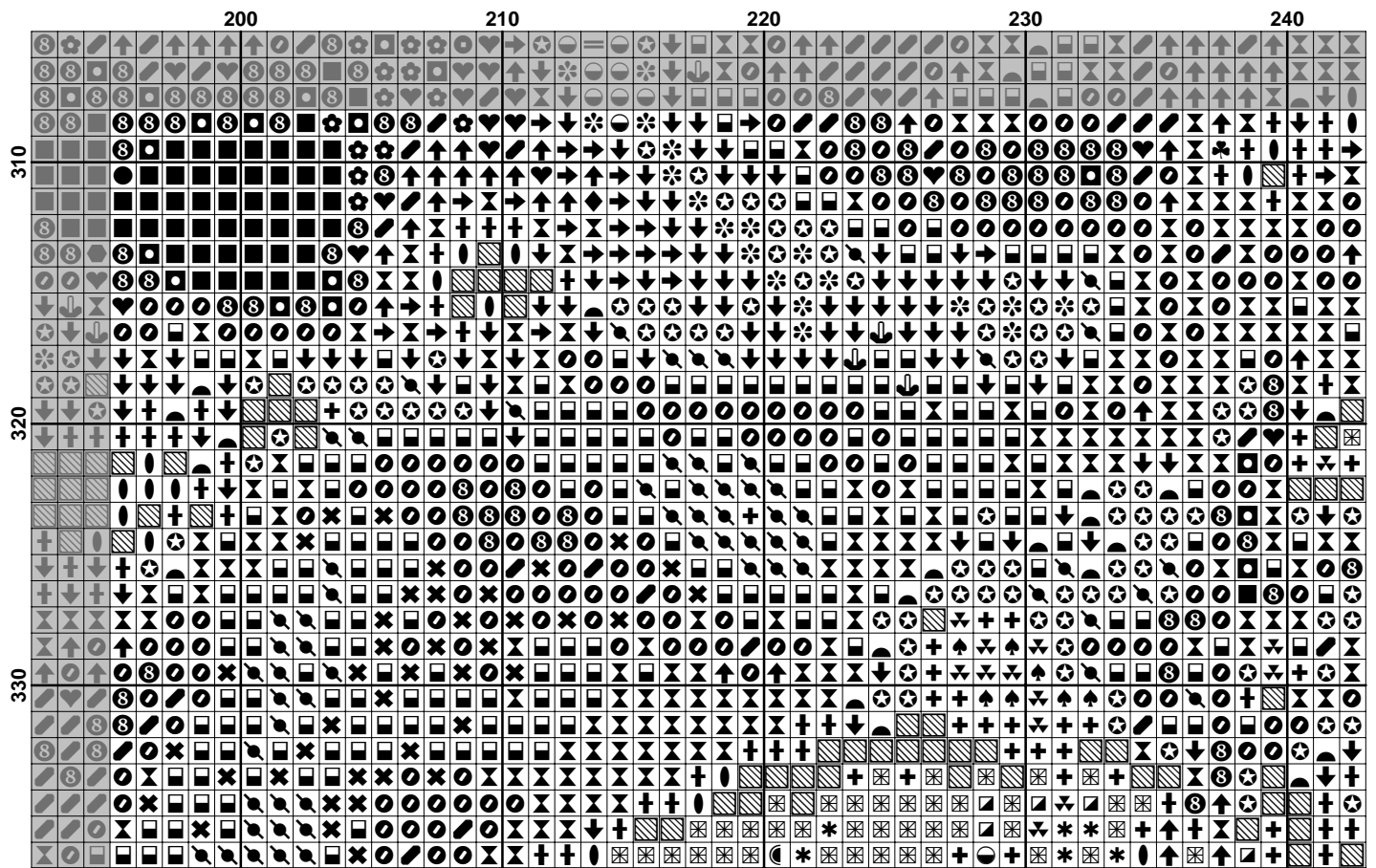


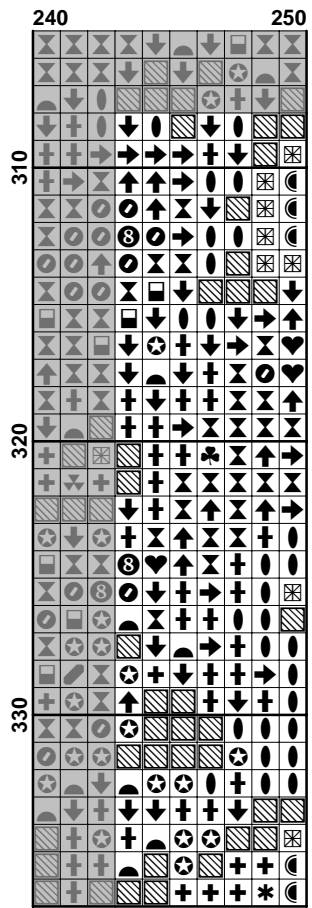




















Pattern Name: Lesní mužíček 2
Designed By: J.Krömerová
Company: vysivani-krizkem.wz.cz
Copyright: Copyright art 2010
Fabric: Aida 14, White
 250w X 337h Stitches
Size(s): 14 Count, 45.36w X 61.14h cm
 18 Count, 35.28w X 47.55h cm
 22 Count, 28.86w X 38.91h cm

Floss Used for Full Stitches:

Symbol	Strands	Type	Number	Color
	2	DMC	154	Grape-VY DK
	2	DMC	164	Forest Green-LT
	2	DMC	165	Moss Green-VY LT
	2	DMC	310	Black
	2	DMC	317	Pewter Gray
	2	DMC	319	Pistachio Green-VY DK
	2	DMC	320	Pistachio Green-MD
	2	DMC	367	Pistachio Green-DK
	2	DMC	370	Mustard-MD
	2	DMC	372	Mustard-LT
	2	DMC	413	Pewter Gray-DK
	2	DMC	436	Tan
	2	DMC	452	Shell Gray-MD
	2	DMC	500	Blue Green-VY DK
	2	DMC	520	Fern Green-DK
	2	DMC	522	Fern Green
	2	DMC	524	Fern Green-VY LT
	2	DMC	640	Beige Gray-VY DK
	2	DMC	645	Beaver Gray-VY DK
	2	DMC	701	Christmas Green-LT
	2	DMC	702	Kelly Green
	2	DMC	779	Cocoa-DK
	2	DMC	823	Navy Blue-DK
	2	DMC	831	Golden Olive-MD
	2	DMC	833	Golden Olive-LT
	2	DMC	841	Beige Brown-LT
	2	DMC	890	Pistachio Green-UL DK
	2	DMC	898	Coffee Brown-VY DK
	2	DMC	905	Parrot Green-DK
	2	DMC	913	Nile Green-MD
	2	DMC	926	Gray Green-MD
	2	DMC	930	Antique Blue-DK
	2	DMC	938	Coffee Brown-UL DK
	2	DMC	955	Nile Green-LT
	2	DMC	975	Golden Brown-DK
	2	DMC	987	Forest Green-DK
	2	DMC	988	Forest Green-MD
	2	DMC	989	Forest Green
	2	DMC	3012	Khaki Green-MD
	2	DMC	3031	Mocha Brown-VY DK
	2	DMC	3047	Yellow Beige-LT
	2	DMC	3051	Green Gray-DK
	2	DMC	3345	Hunter Green-DK
	2	DMC	3346	Hunter Green
	2	DMC	3347	Yellow Green-MD
	2	DMC	3348	Yellow Green-LT
	2	DMC	3363	Pine Green-MD
	2	DMC	3364	Pine Green
	2	DMC	3371	Black Brown
	2	DMC	3770	Tawny-VY LT
	2	DMC	3787	Brown Gray-DK

Symbol	Strands	Type	Number	Color
 	2	DMC	3799	Pewter Gray-VY DK
 	2	DMC	3860	Cocoa
 	2	DMC	3861	Cocoa-LT
 	2	DMC	3864	Mocha Beige-LT

Usage Summary

Strands Per Skein: 6

Skein Length: 795.0 cm

Type	Number	Full	Half	Quarter	Petite	Back(cm)	Str(cm)	Spec(cm)	French	Bead	Skein Est.
DMC	154	739	0	0	0	0.0	0.0	0.0	0	0	1.000
DMC	164	1078	0	0	0	0.0	0.0	0.0	0	0	1.000
DMC	165	210	0	0	0	0.0	0.0	0.0	0	0	1.000
DMC	310	18271	0	0	0	0.0	0.0	0.0	0	0	8.000
DMC	317	454	0	0	0	0.0	0.0	0.0	0	0	1.000
DMC	319	2884	0	0	0	0.0	0.0	0.0	0	0	2.000
DMC	320	820	0	0	0	0.0	0.0	0.0	0	0	1.000
DMC	367	925	0	0	0	0.0	0.0	0.0	0	0	1.000
DMC	370	166	0	0	0	0.0	0.0	0.0	0	0	1.000
DMC	372	187	0	0	0	0.0	0.0	0.0	0	0	1.000
DMC	413	1606	0	0	0	0.0	0.0	0.0	0	0	1.000
DMC	436	95	0	0	0	0.0	0.0	0.0	0	0	1.000
DMC	452	689	0	0	0	0.0	0.0	0.0	0	0	1.000
DMC	500	5928	0	0	0	0.0	0.0	0.0	0	0	3.000
DMC	520	4013	0	0	0	0.0	0.0	0.0	0	0	2.000
DMC	522	851	0	0	0	0.0	0.0	0.0	0	0	1.000
DMC	524	353	0	0	0	0.0	0.0	0.0	0	0	1.000
DMC	640	1242	0	0	0	0.0	0.0	0.0	0	0	1.000
DMC	645	1202	0	0	0	0.0	0.0	0.0	0	0	1.000
DMC	701	68	0	0	0	0.0	0.0	0.0	0	0	1.000
DMC	702	43	0	0	0	0.0	0.0	0.0	0	0	1.000
DMC	779	2655	0	0	0	0.0	0.0	0.0	0	0	2.000
DMC	823	287	0	0	0	0.0	0.0	0.0	0	0	1.000
DMC	831	49	0	0	0	0.0	0.0	0.0	0	0	1.000
DMC	833	20	0	0	0	0.0	0.0	0.0	0	0	1.000
DMC	841	760	0	0	0	0.0	0.0	0.0	0	0	1.000
DMC	890	3437	0	0	0	0.0	0.0	0.0	0	0	2.000
DMC	898	583	0	0	0	0.0	0.0	0.0	0	0	1.000
DMC	905	64	0	0	0	0.0	0.0	0.0	0	0	1.000
DMC	913	90	0	0	0	0.0	0.0	0.0	0	0	1.000
DMC	926	143	0	0	0	0.0	0.0	0.0	0	0	1.000
DMC	930	146	0	0	0	0.0	0.0	0.0	0	0	1.000
DMC	938	1530	0	0	0	0.0	0.0	0.0	0	0	1.000
DMC	955	414	0	0	0	0.0	0.0	0.0	0	0	1.000
DMC	975	94	0	0	0	0.0	0.0	0.0	0	0	1.000
DMC	987	986	0	0	0	0.0	0.0	0.0	0	0	1.000
DMC	988	170	0	0	0	0.0	0.0	0.0	0	0	1.000
DMC	989	1069	0	0	0	0.0	0.0	0.0	0	0	1.000
DMC	3012	98	0	0	0	0.0	0.0	0.0	0	0	1.000
DMC	3031	2717	0	0	0	0.0	0.0	0.0	0	0	2.000
DMC	3047	1069	0	0	0	0.0	0.0	0.0	0	0	1.000
DMC	3051	1119	0	0	0	0.0	0.0	0.0	0	0	1.000
DMC	3345	2116	0	0	0	0.0	0.0	0.0	0	0	1.000
DMC	3346	973	0	0	0	0.0	0.0	0.0	0	0	1.000
DMC	3347	1241	0	0	0	0.0	0.0	0.0	0	0	1.000
DMC	3348	1032	0	0	0	0.0	0.0	0.0	0	0	1.000
DMC	3363	1902	0	0	0	0.0	0.0	0.0	0	0	1.000
DMC	3364	860	0	0	0	0.0	0.0	0.0	0	0	1.000
DMC	3371	4134	0	0	0	0.0	0.0	0.0	0	0	2.000
DMC	3770	813	0	0	0	0.0	0.0	0.0	0	0	1.000
DMC	3787	2749	0	0	0	0.0	0.0	0.0	0	0	2.000
DMC	3799	5117	0	0	0	0.0	0.0	0.0	0	0	3.000
DMC	3860	2023	0	0	0	0.0	0.0	0.0	0	0	1.000
DMC	3861	1149	0	0	0	0.0	0.0	0.0	0	0	1.000
DMC	3864	817	0	0	0	0.0	0.0	0.0	0	0	1.000