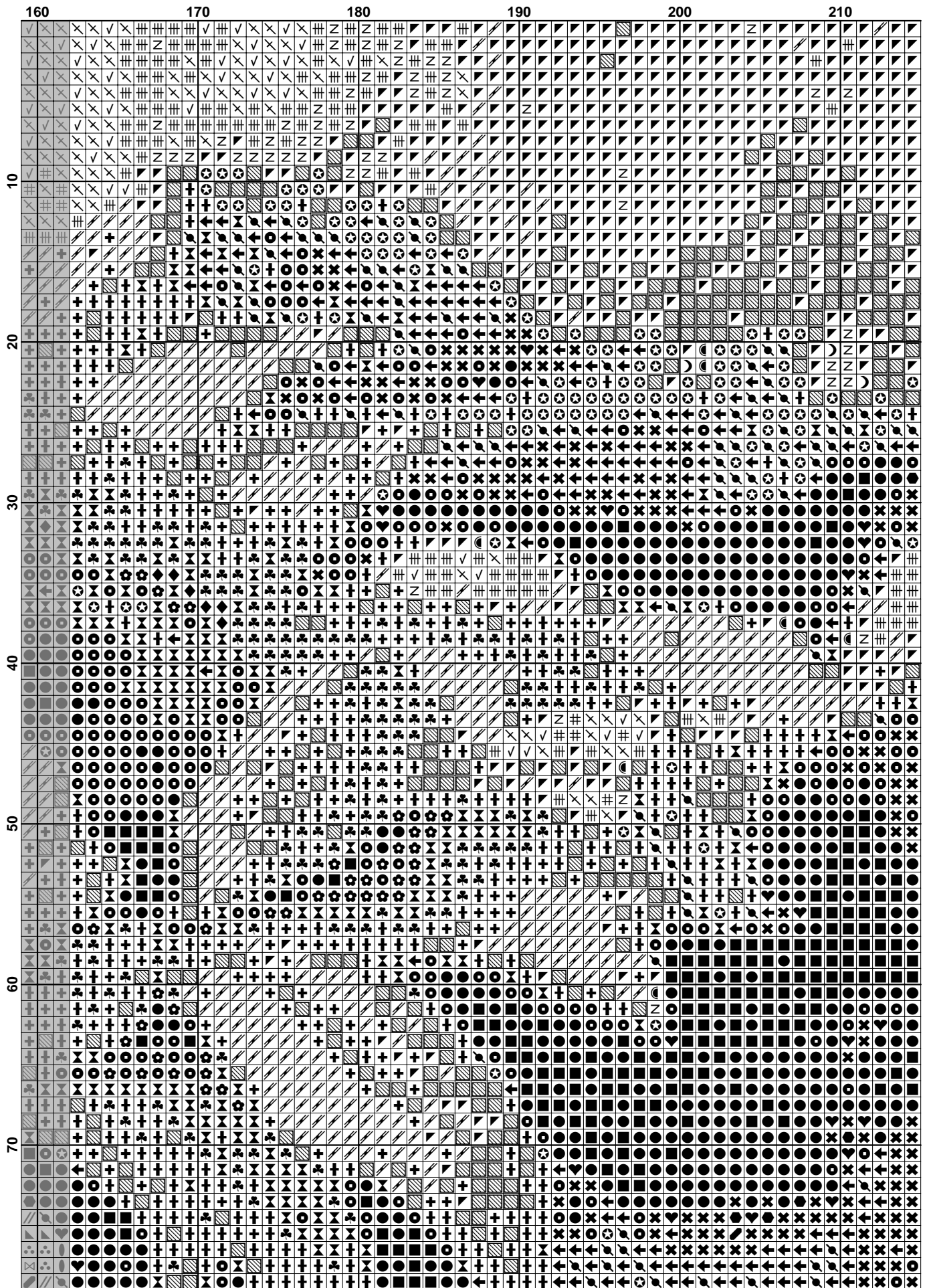
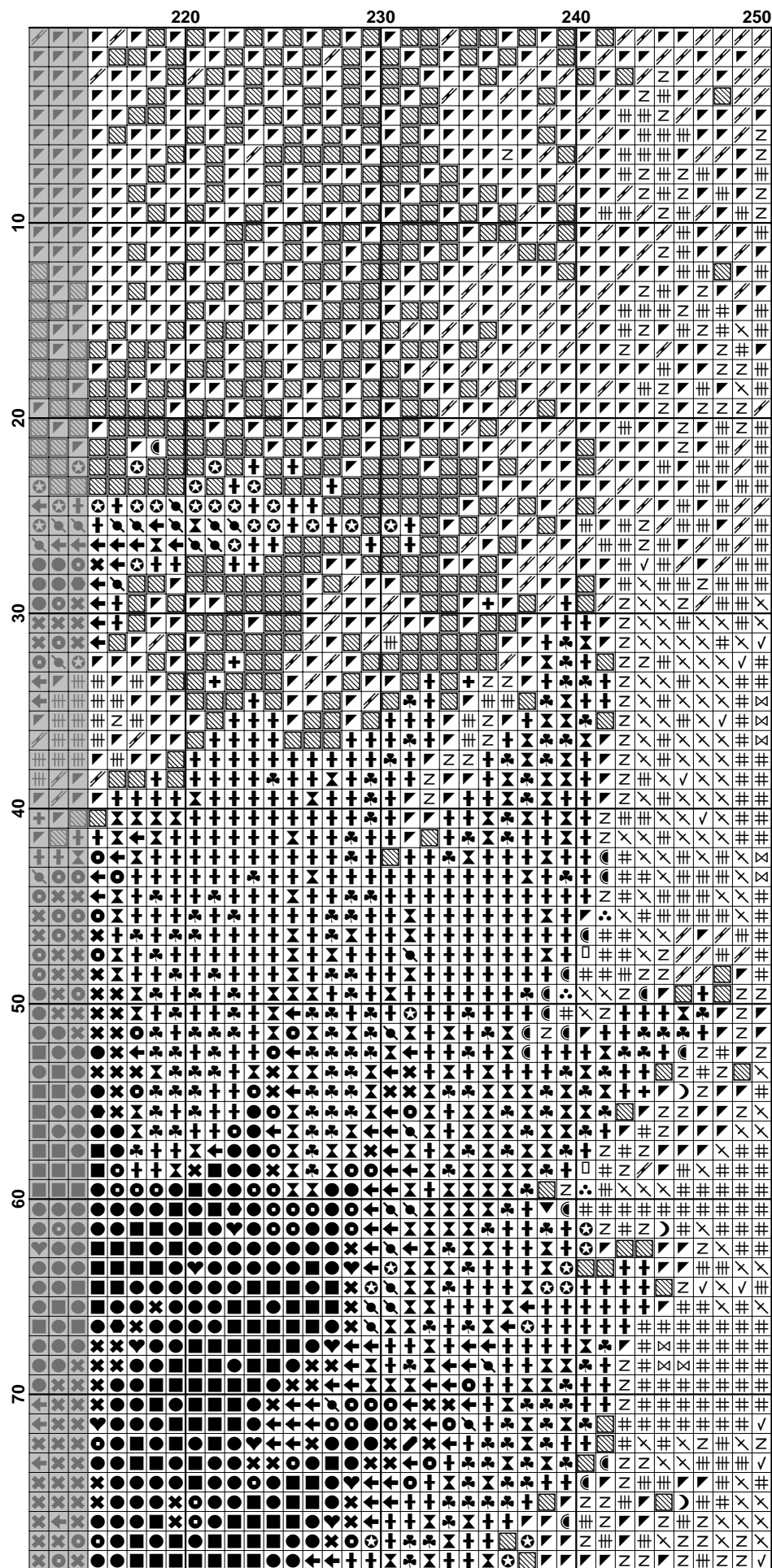


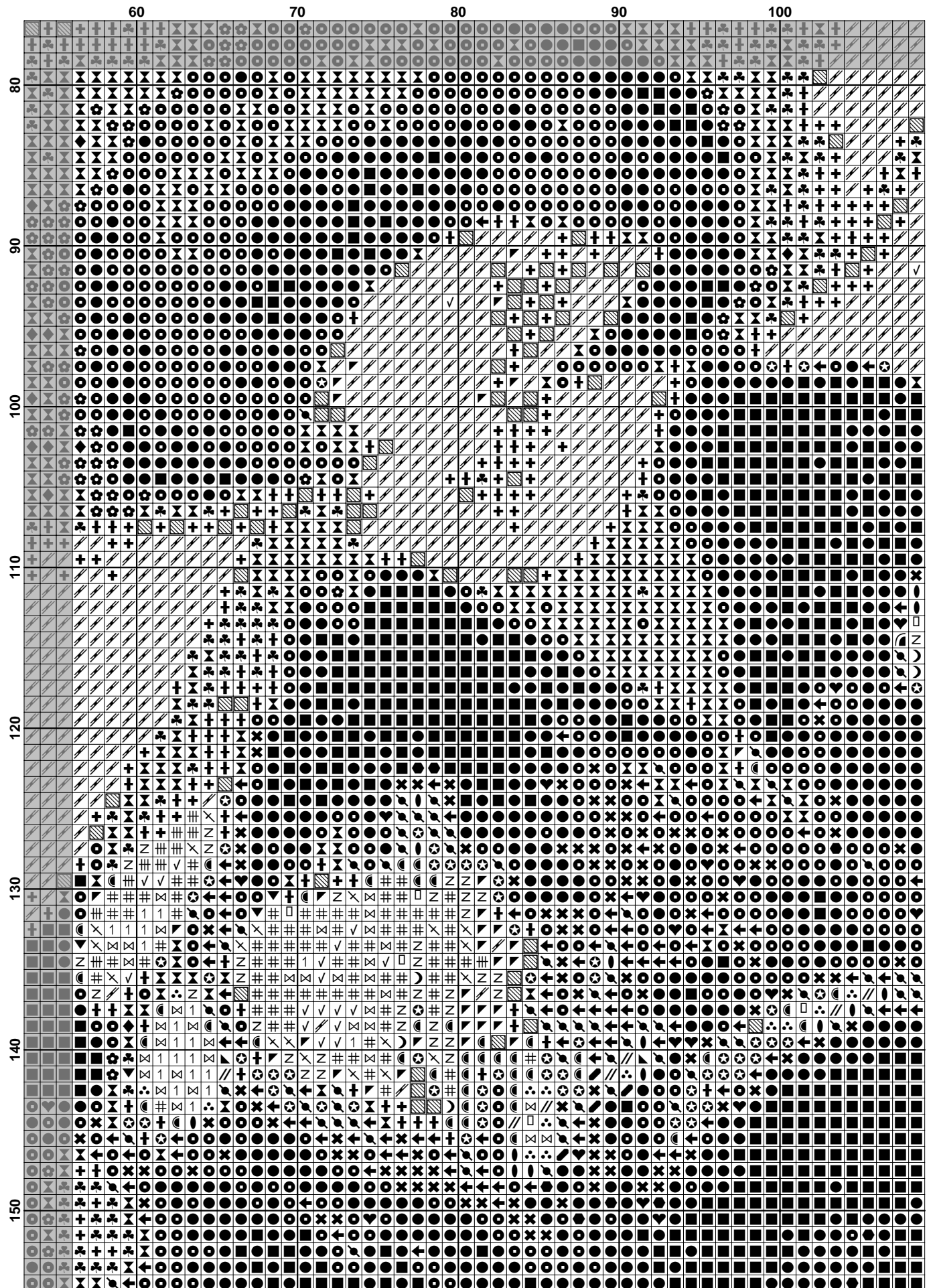
	10	20	30	40	50
10	Z	Z	Z	Z	Z
20	Z	Z	Z	Z	Z
30	Z	Z	Z	Z	Z
40	Z	Z	Z	Z	Z
50	Z	Z	Z	Z	Z
60	Z	Z	Z	Z	Z
70	Z	Z	Z	Z	Z
80	Z	Z	Z	Z	Z
90	Z	Z	Z	Z	Z
100	Z	Z	Z	Z	Z
110	Z	Z	Z	Z	Z
120	Z	Z	Z	Z	Z
130	Z	Z	Z	Z	Z
140	Z	Z	Z	Z	Z
150	Z	Z	Z	Z	Z
160	Z	Z	Z	Z	Z
170	Z	Z	Z	Z	Z
180	Z	Z	Z	Z	Z
190	Z	Z	Z	Z	Z
200	Z	Z	Z	Z	Z
210	Z	Z	Z	Z	Z
220	Z	Z	Z	Z	Z
230	Z	Z	Z	Z	Z
240	Z	Z	Z	Z	Z
250	Z	Z	Z	Z	Z
260	Z	Z	Z	Z	Z
270	Z	Z	Z	Z	Z
280	Z	Z	Z	Z	Z
290	Z	Z	Z	Z	Z
300	Z	Z	Z	Z	Z
310	Z	Z	Z	Z	Z
320	Z	Z	Z	Z	Z
330	Z	Z	Z	Z	Z
340	Z	Z	Z	Z	Z
350	Z	Z	Z	Z	Z
360	Z	Z	Z	Z	Z
370	Z	Z	Z	Z	Z
380	Z	Z	Z	Z	Z
390	Z	Z	Z	Z	Z
400	Z	Z	Z	Z	Z
410	Z	Z	Z	Z	Z
420	Z	Z	Z	Z	Z
430	Z	Z	Z	Z	Z
440	Z	Z	Z	Z	Z
450	Z	Z	Z	Z	Z
460	Z	Z	Z	Z	Z
470	Z	Z	Z	Z	Z
480	Z	Z	Z	Z	Z
490	Z	Z	Z	Z	Z
500	Z	Z	Z	Z	Z
510	Z	Z	Z	Z	Z
520	Z	Z	Z	Z	Z
530	Z	Z	Z	Z	Z
540	Z	Z	Z	Z	Z
550	Z	Z	Z	Z	Z
560	Z	Z	Z	Z	Z
570	Z	Z	Z	Z	Z
580	Z	Z	Z	Z	Z
590	Z	Z	Z	Z	Z
600	Z	Z	Z	Z	Z
610	Z	Z	Z	Z	Z
620	Z	Z	Z	Z	Z
630	Z	Z	Z	Z	Z
640	Z	Z	Z	Z	Z
650	Z	Z	Z	Z	Z
660	Z	Z	Z	Z	Z
670	Z	Z	Z	Z	Z
680	Z	Z	Z	Z	Z
690	Z	Z	Z	Z	Z
700	Z	Z	Z	Z	Z
710	Z	Z	Z	Z	Z
720	Z	Z	Z	Z	Z
730	Z	Z	Z	Z	Z
740	Z	Z	Z	Z	Z
750	Z	Z	Z	Z	Z
760	Z	Z	Z	Z	Z
770	Z	Z	Z	Z	Z
780	Z	Z	Z	Z	Z
790	Z	Z	Z	Z	Z
800	Z	Z	Z	Z	Z
810	Z	Z	Z	Z	Z
820	Z	Z	Z	Z	Z
830	Z	Z	Z	Z	Z
840	Z	Z	Z	Z	Z
850	Z	Z	Z	Z	Z
860	Z	Z	Z	Z	Z
870	Z	Z	Z	Z	Z
880	Z	Z	Z	Z	Z
890	Z	Z	Z	Z	Z
900	Z	Z	Z	Z	Z
910	Z	Z	Z	Z	Z
920	Z	Z	Z	Z	Z
930	Z	Z	Z	Z	Z
940	Z	Z	Z	Z	Z
950	Z	Z	Z	Z	Z
960	Z	Z	Z	Z	Z
970	Z	Z	Z	Z	Z
980	Z	Z	Z	Z	Z
990	Z	Z	Z	Z	Z
1000	Z	Z	Z	Z	Z

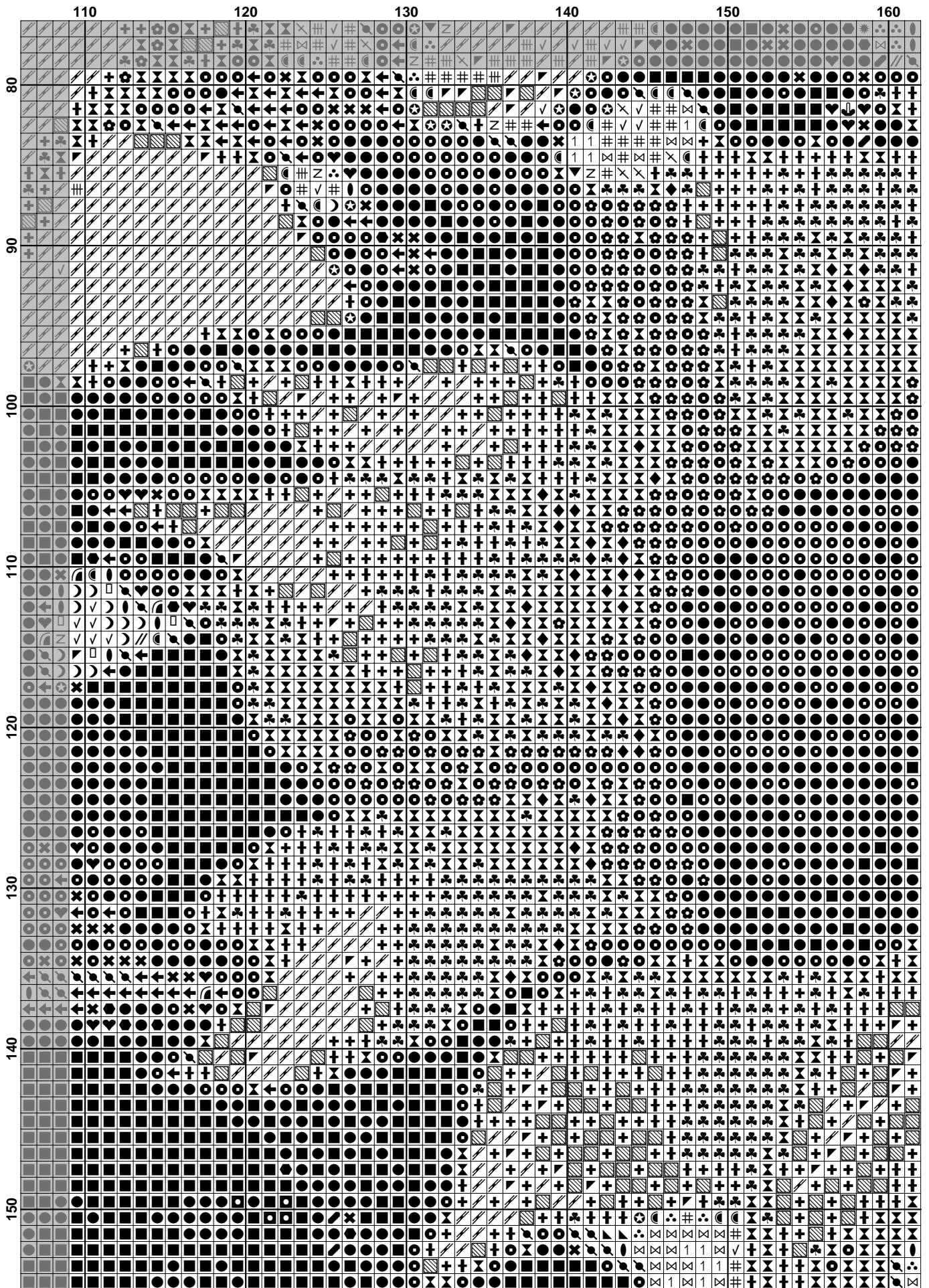


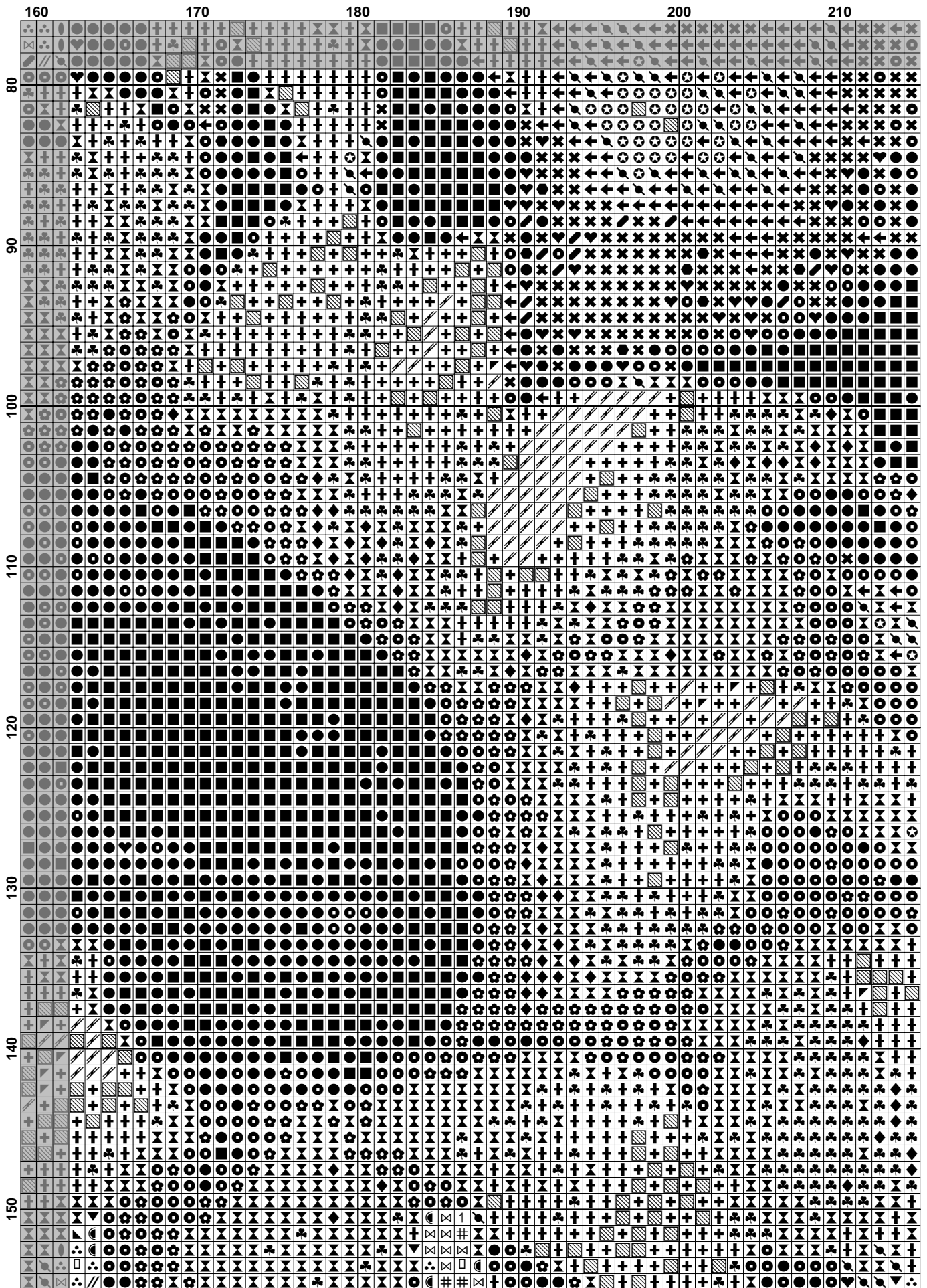


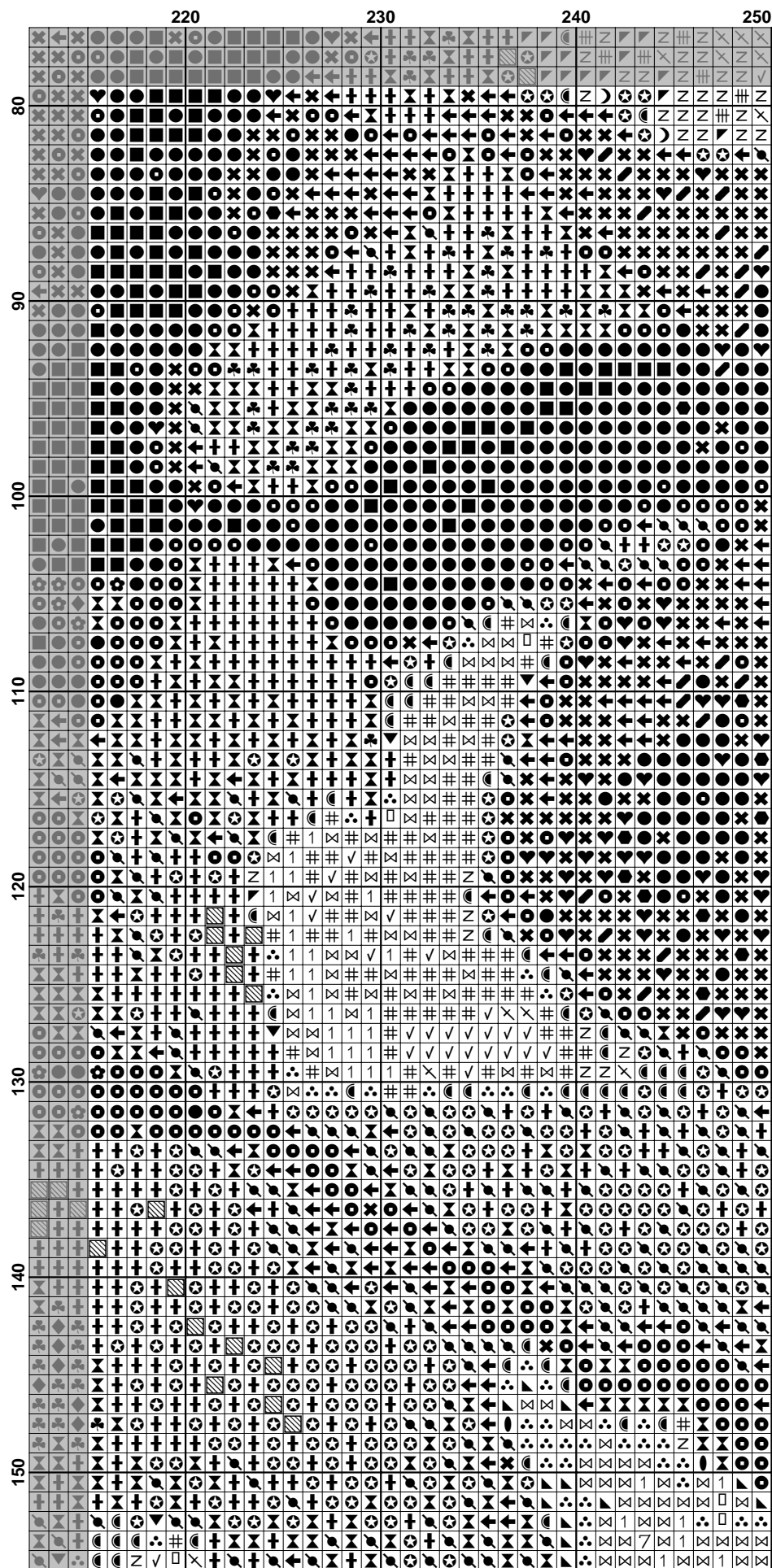


	10	20	30	40	50
80
90
100
110
120
130
140
150

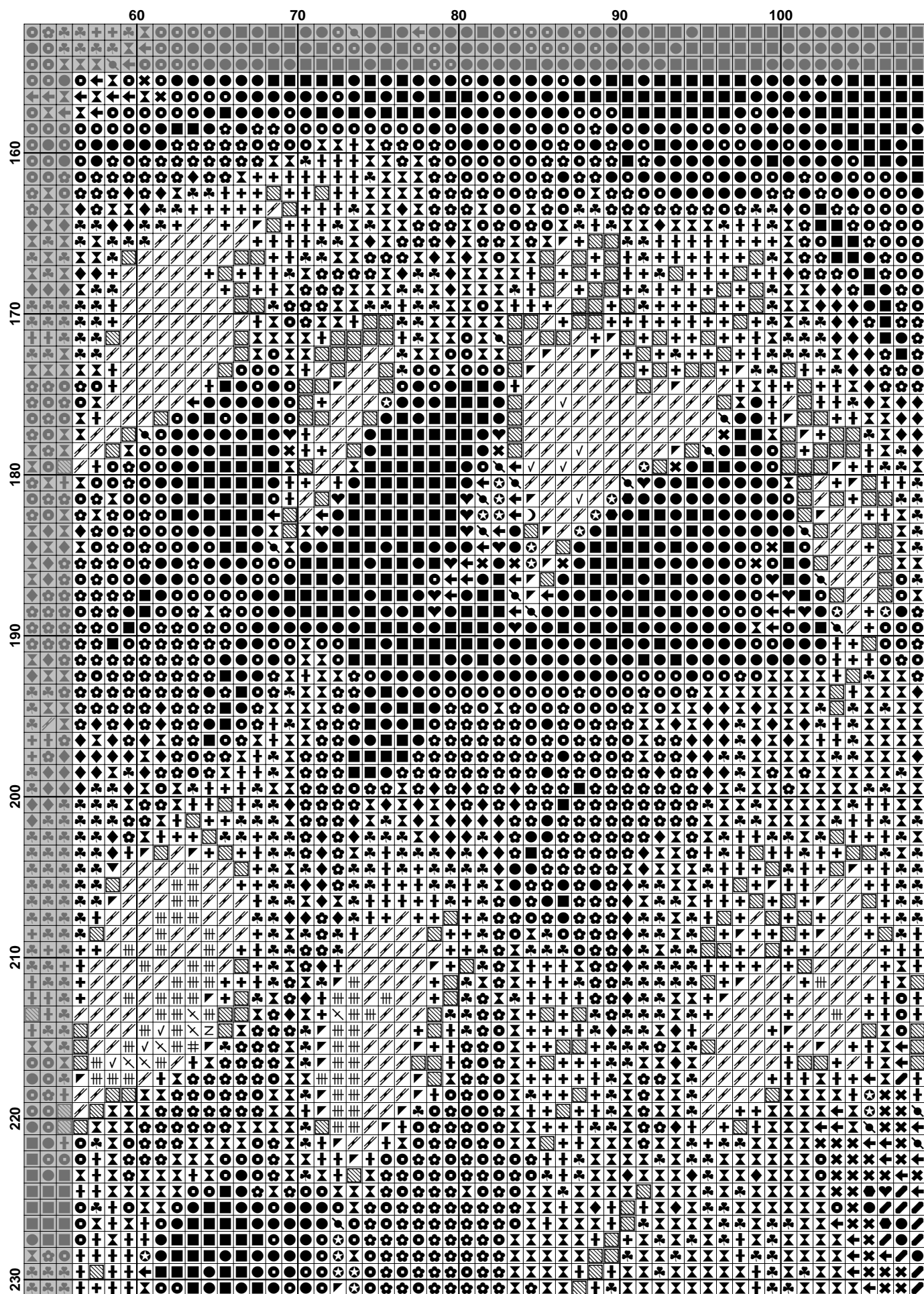


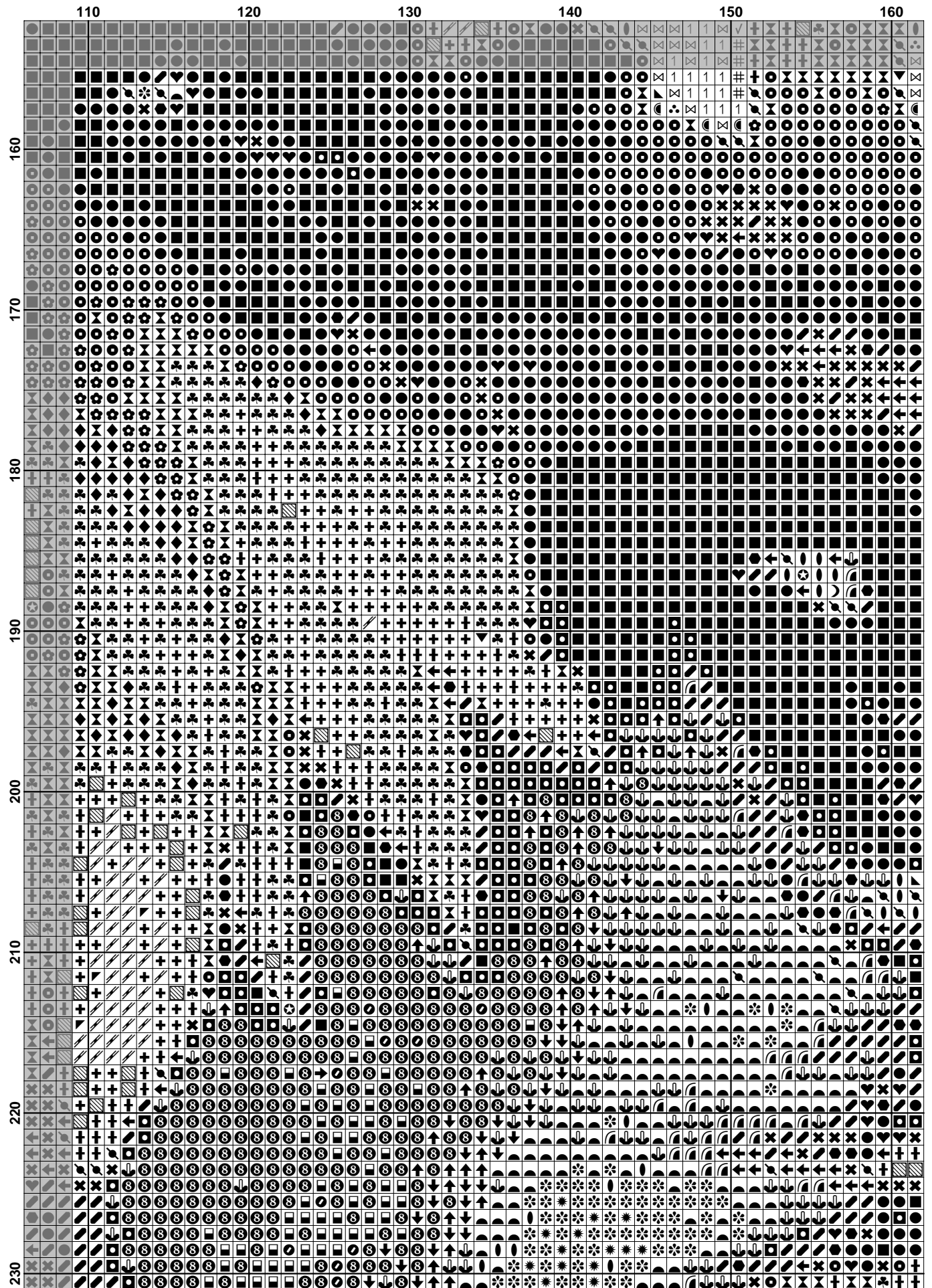


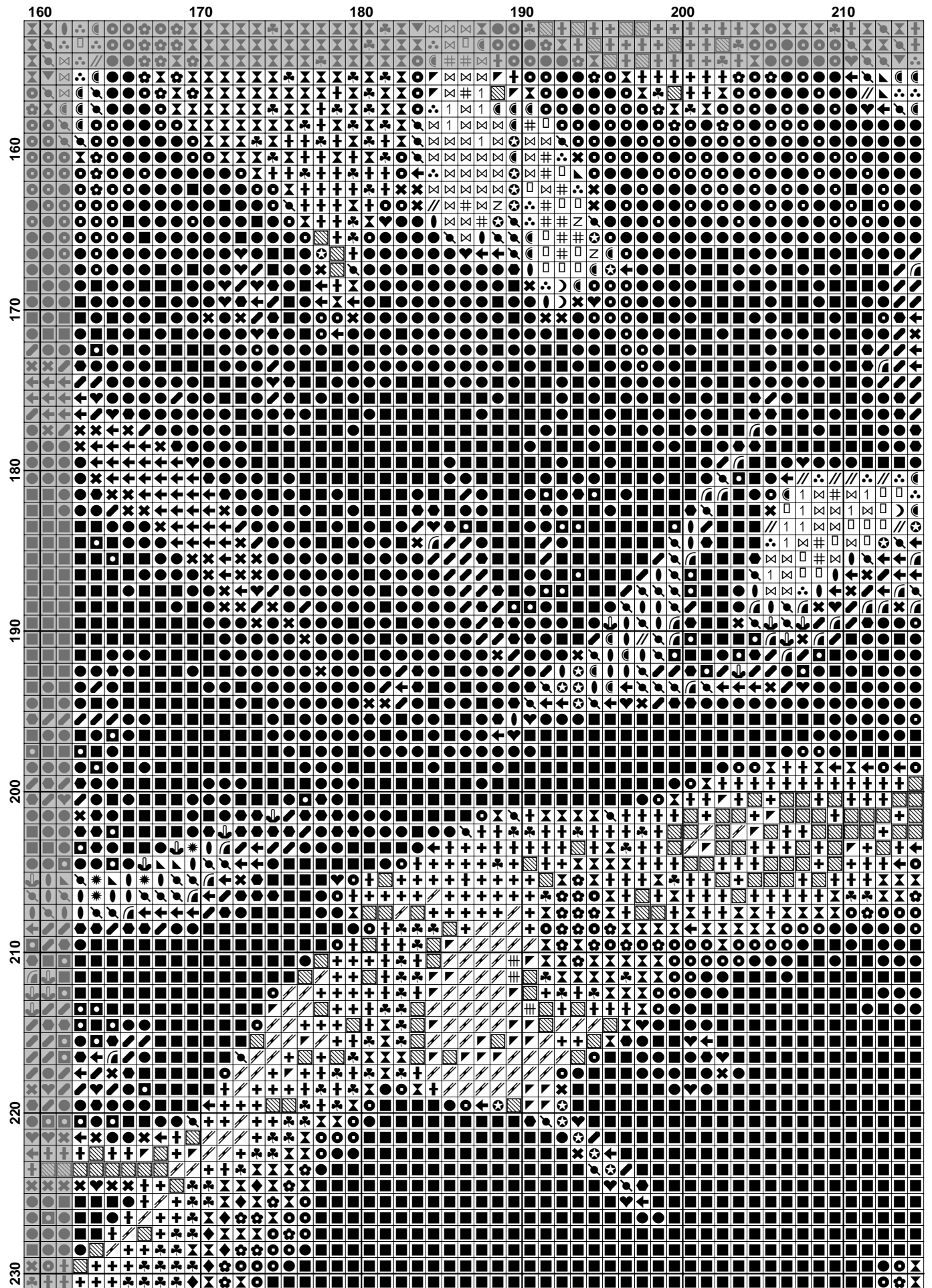


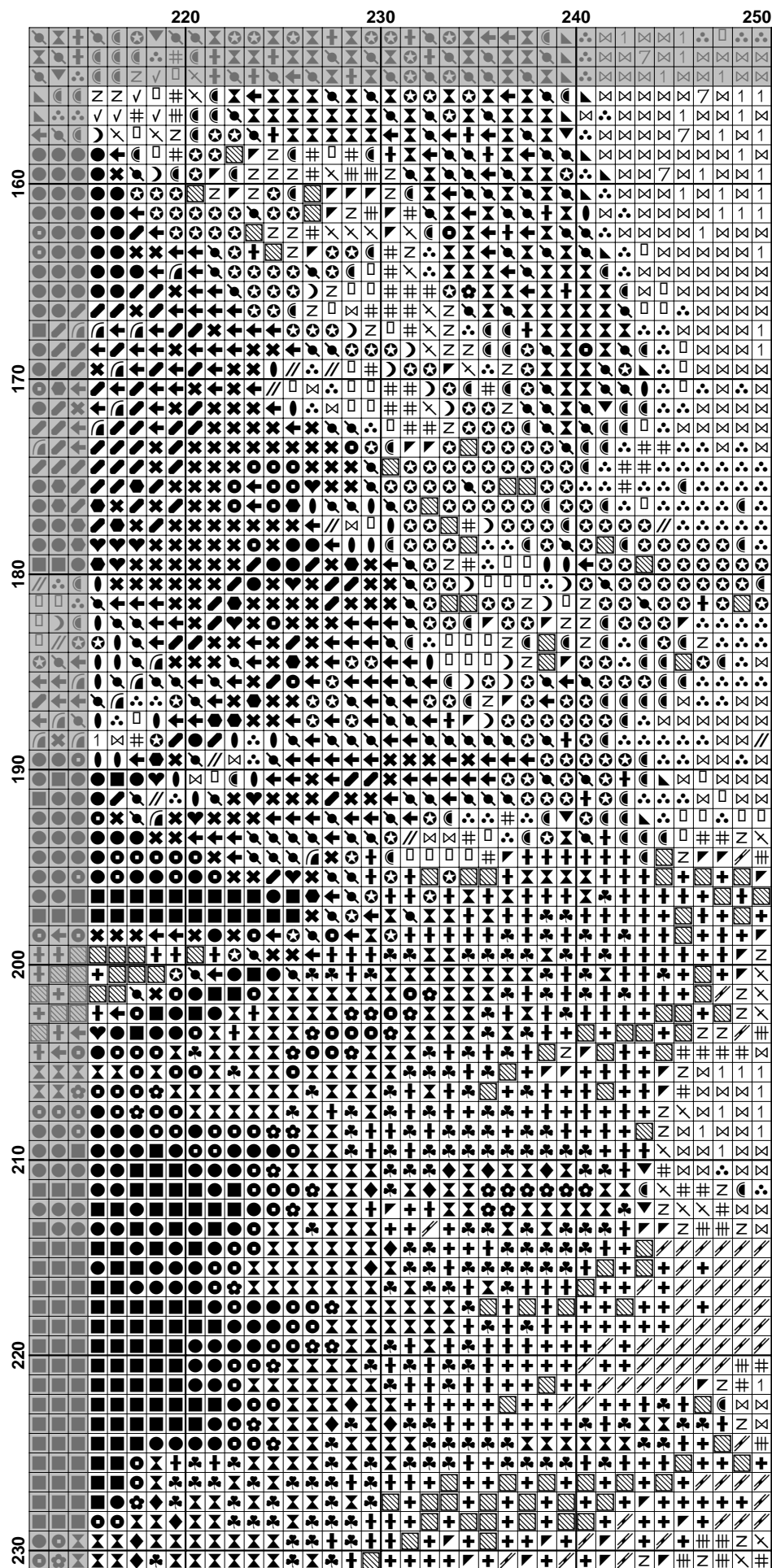


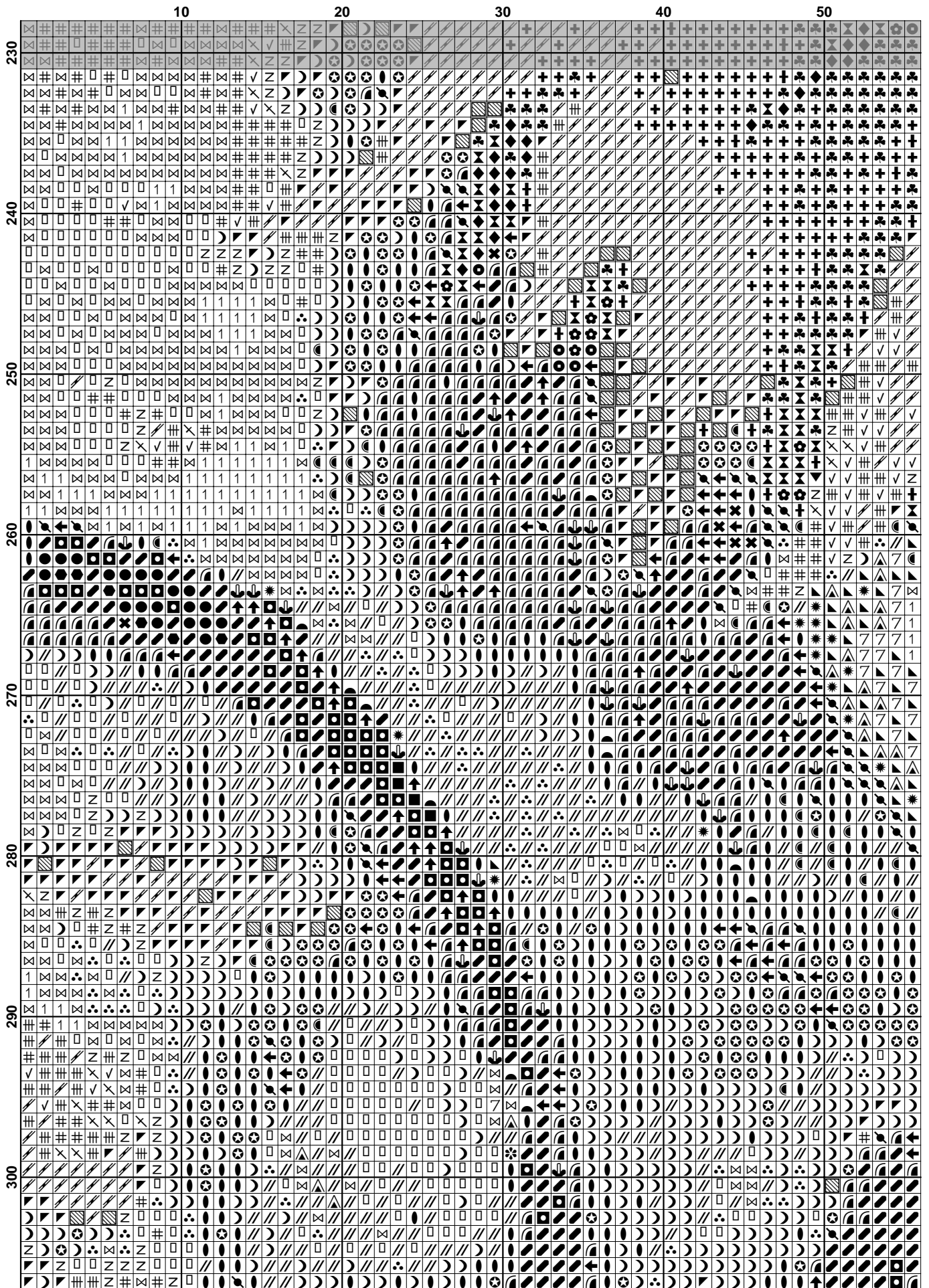


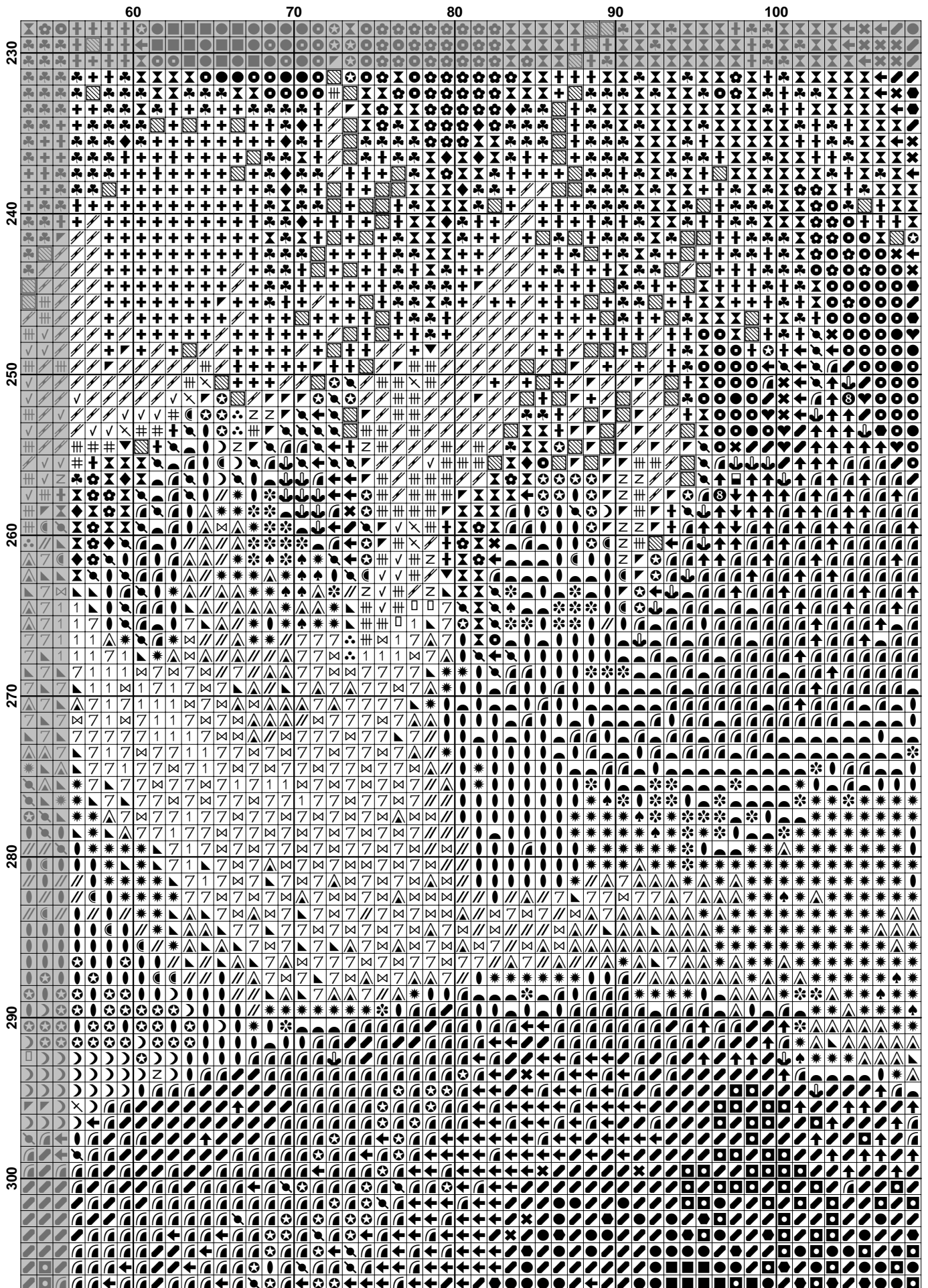


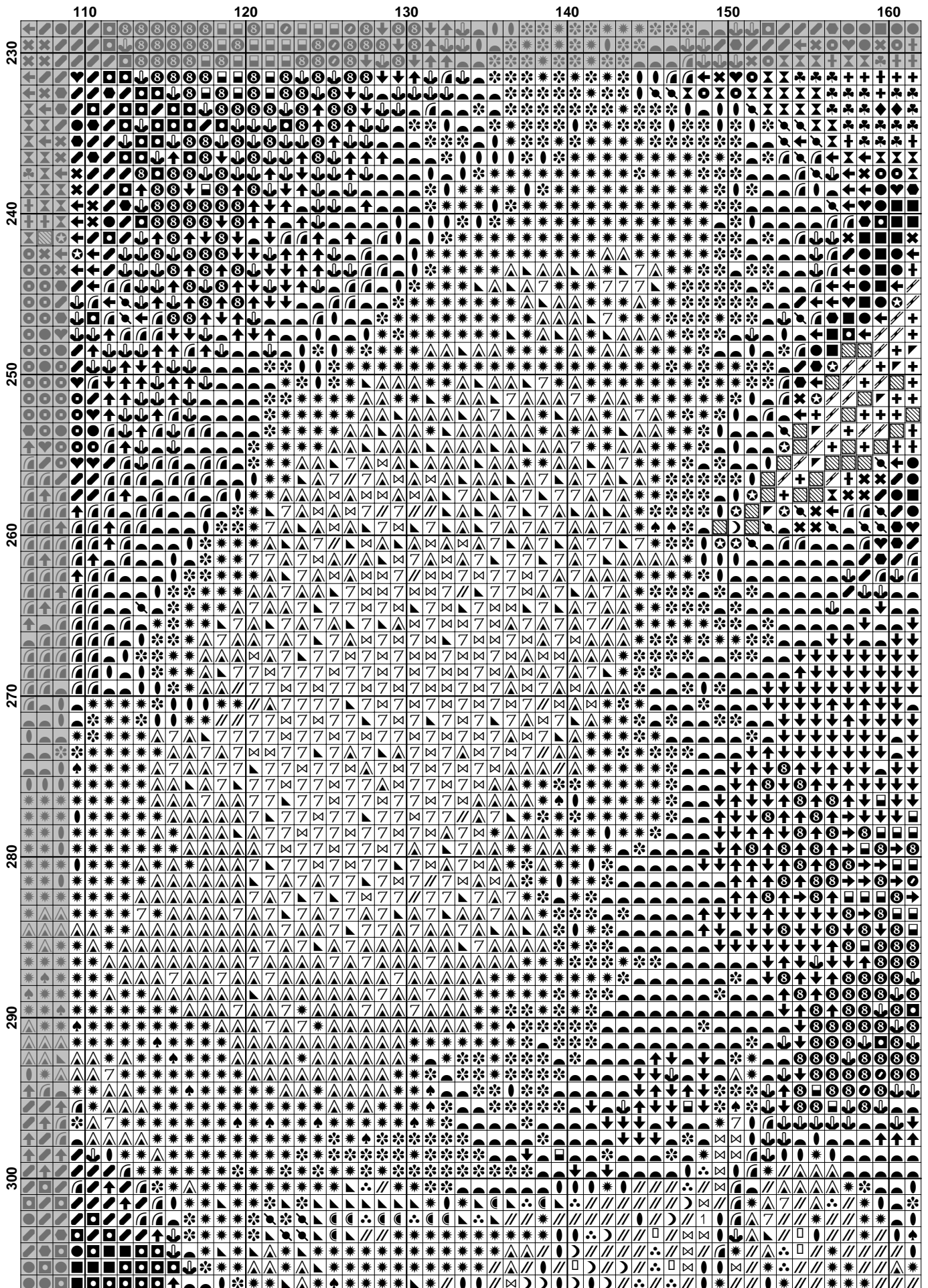


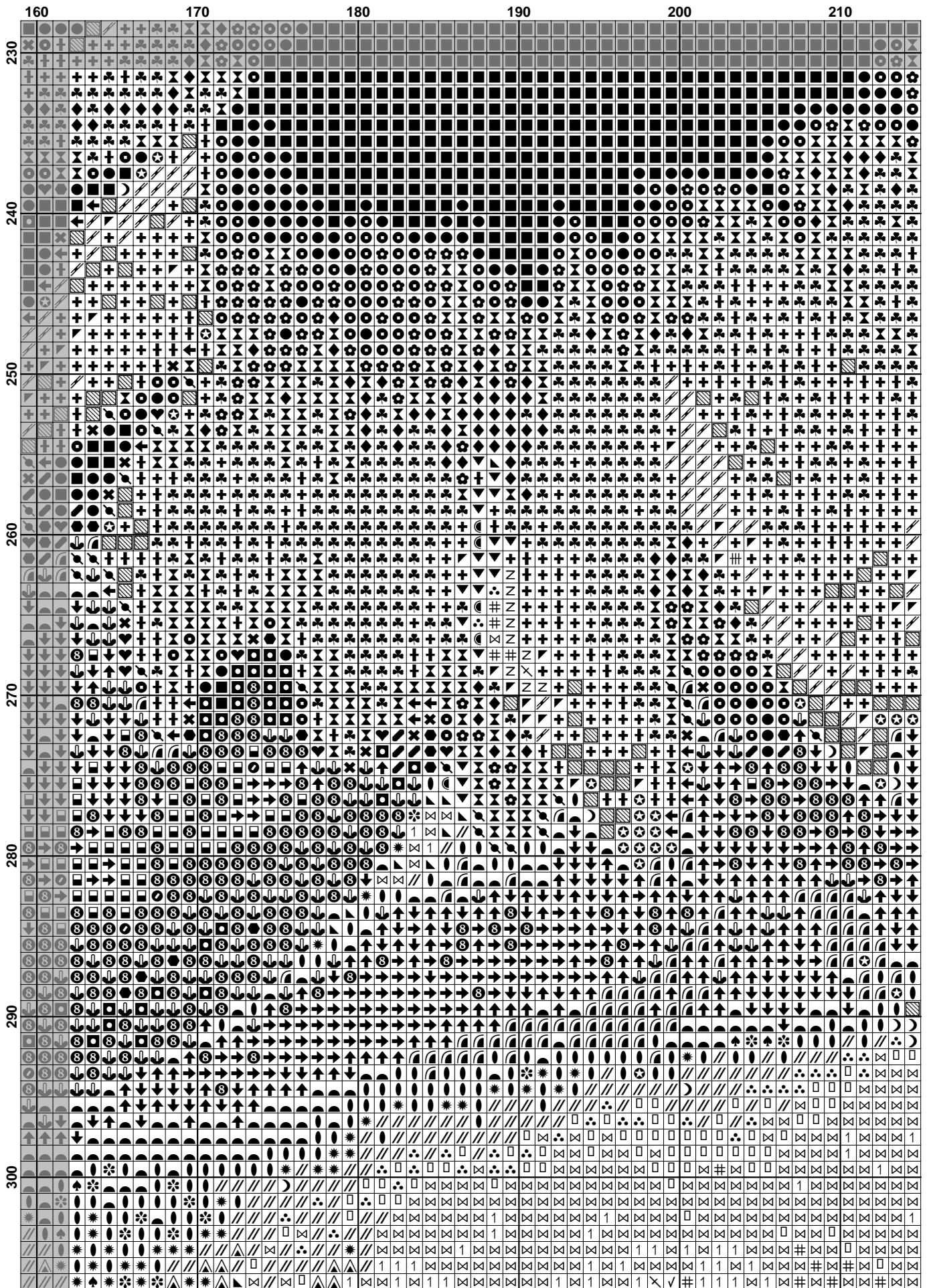




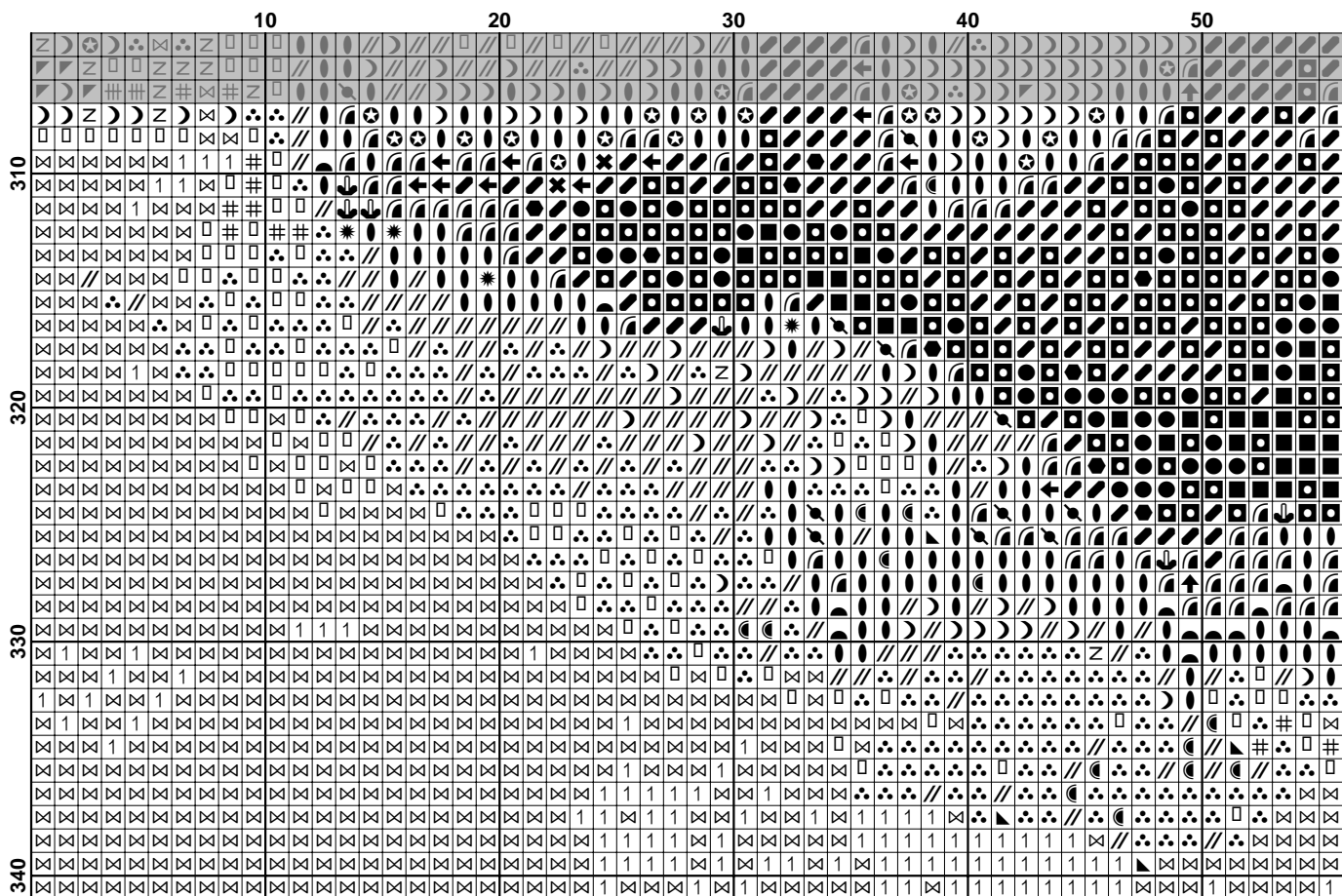


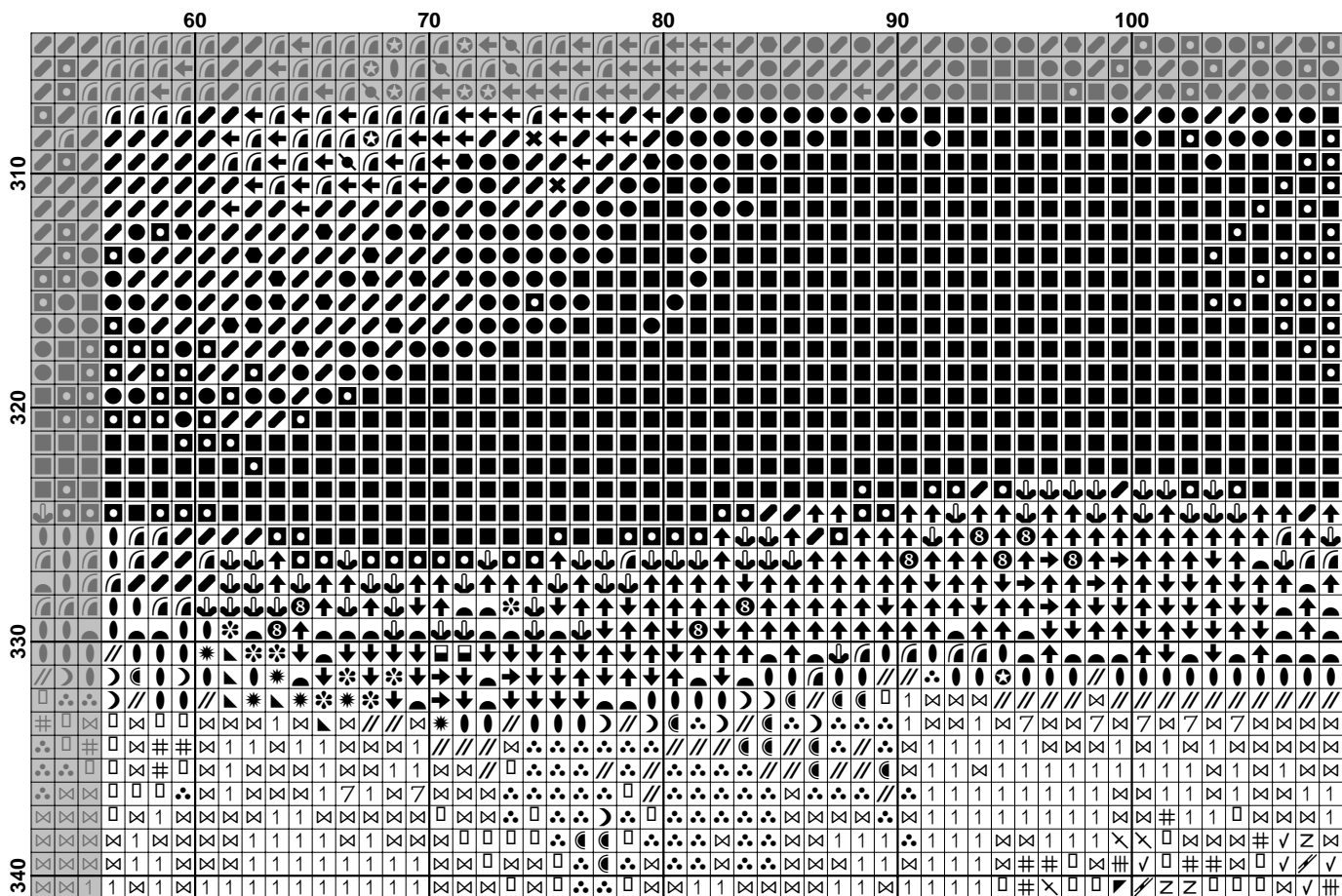


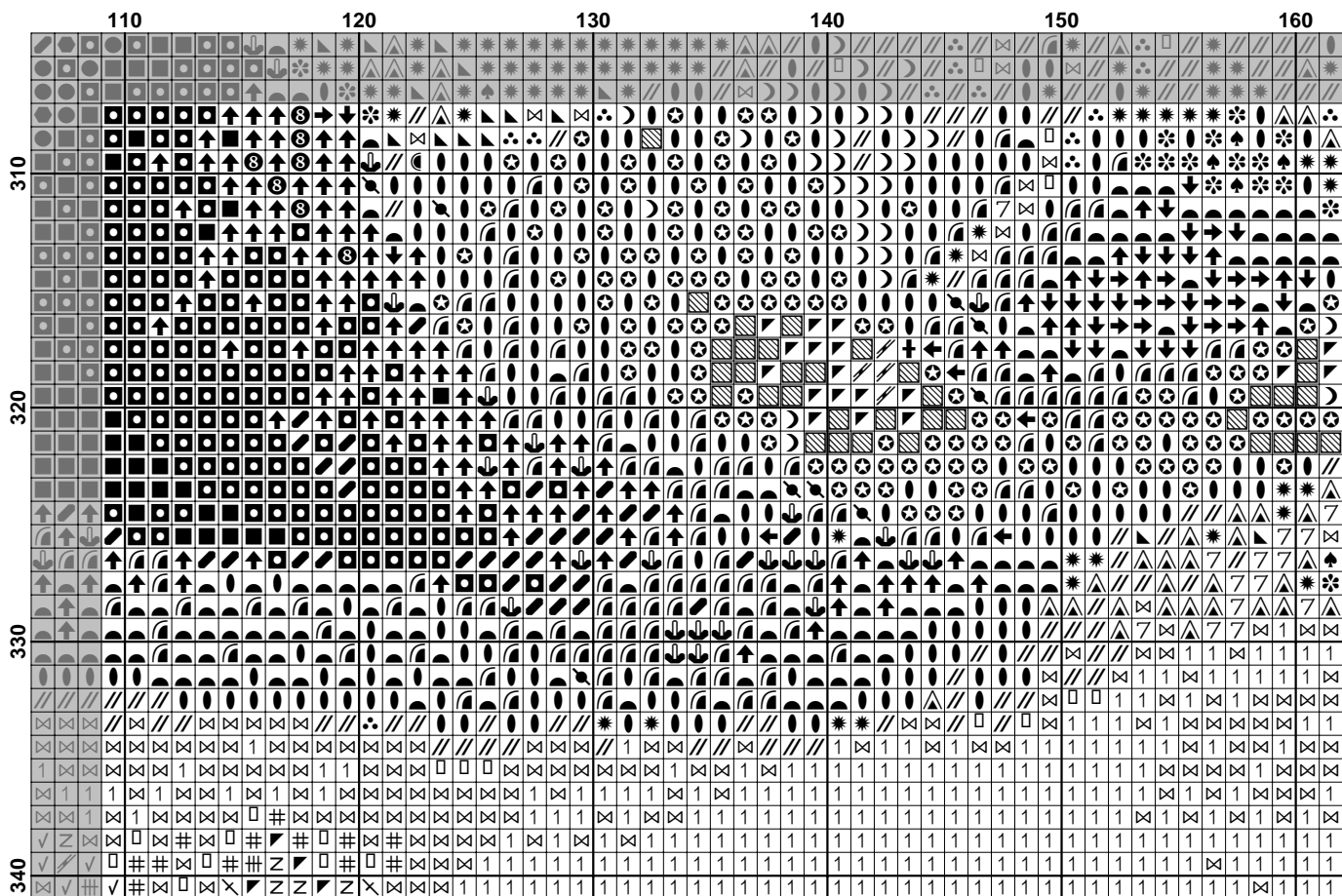




	220	230	240	250
230	+	+	+	+
240	+	+	+	+
250	+	+	+	+
260	+	+	+	+
270	+	+	+	+
280	+	+	+	+
290	+	+	+	+
300	+	+	+	+







	160	170	180	190	200	210
310	☀️	☀️	☀️	☀️	☀️	☀️
320	☀️	☀️	☀️	☀️	☀️	☀️
330	☀️	☀️	☀️	☀️	☀️	☀️
340	☀️	☀️	☀️	☀️	☀️	☀️

Pattern Name: Kytice slunečnic
Designed By: J.Krömerová
Company: vysivani-krizkem.wz.cz
Copyright: Copyright art 2012
Fabric: Aida 14, White
 250w X 341h Stitches
Size(s): 14 Count, 45.36w X 61.87h cm
 18 Count, 35.28w X 48.12h cm
 22 Count, 28.86w X 39.37h cm

Floss Used for Full Stitches:

Symbol	Strands	Type	Number	Color
	2	DMC	164	Forest Green-LT
	2	DMC	165	Moss Green-VY LT
	2	DMC	282	Light Gold Divisible Metallic Spool
	2	DMC	300	Mahogany-VY DK
	2	DMC	310	Black
	2	DMC	312	Baby Blue-VY DK
	2	DMC	349	Coral-DK
	2	DMC	368	Pistachio Green-LT
	2	DMC	420	Hazelnut Brown-DK
	2	DMC	469	Avocado Green
	2	DMC	471	Avocado Green-VY LT
	2	DMC	498	Christmas Red-DK
	2	DMC	520	Fern Green-DK
	2	DMC	562	Jade-MD
	2	DMC	677	Old Gold-VY LT
	2	DMC	700	Christmas Green-BRT
	2	DMC	720	Orange Spice-DK
	2	DMC	725	Topaz
	2	DMC	726	Topaz-LT
	2	DMC	729	Old Gold-MD
	2	DMC	730	Olive Green-VY DK
	2	DMC	741	Tangerine-MD
	2	DMC	742	Tangerine-LT
	2	DMC	801	Coffee Brown-DK
	2	DMC	829	Golden Olive-VY DK
	2	DMC	832	Golden Olive
	2	DMC	913	Nile Green-MD
	2	DMC	919	Red Copper
	2	DMC	934	Black Avocado Green
	2	DMC	936	Avocado Green-VY DK
	2	DMC	938	Coffee Brown-UL DK
	2	DMC	955	Nile Green-LT
	2	DMC	976	Golden Brown-MD
	2	DMC	3031	Mocha Brown-VY DK
	2	DMC	3046	Yellow Beige-MD
	2	DMC	3348	Yellow Green-LT
	2	DMC	3776	Mahogany-LT
	2	DMC	3808	Turquoise-UL VY DK
	2	DMC	3809	Turquoise-VY DK
	2	DMC	3812	Sea Green-VY DK
	2	DMC	3814	Aquamarine
	2	DMC	3816	Celadon Green-MD
	2	DMC	3819	Moss Green-LT
	2	DMC	3820	Straw-DK
	2	DMC	3821	Straw
	2	DMC	3822	Straw-LT
	2	DMC	3823	Yellow-UL Pale
	2	DMC	3852	Straw-VY DK
	2	DMC	3864	Mocha Beige-LT

Usage Summary

Strands Per Skein: 6

Skein Length: 795.0 cm

Type	Number	Full	Half	Quarter	Petite	Back(cm)	Str(cm)	Spec(cm)	French	Bead	Skein Est.
DMC	164	955	0	0	0	0.0	0.0	0.0	0	0	1.000
DMC	165	843	0	0	0	0.0	0.0	0.0	0	0	1.000
DMC	282	2568	0	0	0	0.0	0.0	0.0	0	0	2.000
DMC	300	3797	0	0	0	0.0	0.0	0.0	0	0	2.000
DMC	310	5677	0	0	0	0.0	0.0	0.0	0	0	3.000
DMC	312	16	0	0	0	0.0	0.0	0.0	0	0	1.000
DMC	349	645	0	0	0	0.0	0.0	0.0	0	0	1.000
DMC	368	1190	0	0	0	0.0	0.0	0.0	0	0	1.000
DMC	420	1149	0	0	0	0.0	0.0	0.0	0	0	1.000
DMC	469	1406	0	0	0	0.0	0.0	0.0	0	0	1.000
DMC	471	1558	0	0	0	0.0	0.0	0.0	0	0	1.000
DMC	498	1699	0	0	0	0.0	0.0	0.0	0	0	1.000
DMC	520	619	0	0	0	0.0	0.0	0.0	0	0	1.000
DMC	562	1368	0	0	0	0.0	0.0	0.0	0	0	1.000
DMC	677	3297	0	0	0	0.0	0.0	0.0	0	0	2.000
DMC	700	726	0	0	0	0.0	0.0	0.0	0	0	1.000
DMC	720	3901	0	0	0	0.0	0.0	0.0	0	0	2.000
DMC	725	1208	0	0	0	0.0	0.0	0.0	0	0	1.000
DMC	726	1985	0	0	0	0.0	0.0	0.0	0	0	1.000
DMC	729	426	0	0	0	0.0	0.0	0.0	0	0	1.000
DMC	730	1808	0	0	0	0.0	0.0	0.0	0	0	1.000
DMC	741	3162	0	0	0	0.0	0.0	0.0	0	0	2.000
DMC	742	5804	0	0	0	0.0	0.0	0.0	0	0	3.000
DMC	801	298	0	0	0	0.0	0.0	0.0	0	0	1.000
DMC	829	1385	0	0	0	0.0	0.0	0.0	0	0	1.000
DMC	832	1735	0	0	0	0.0	0.0	0.0	0	0	1.000
DMC	913	93	0	0	0	0.0	0.0	0.0	0	0	1.000
DMC	919	4853	0	0	0	0.0	0.0	0.0	0	0	3.000
DMC	934	919	0	0	0	0.0	0.0	0.0	0	0	1.000
DMC	936	1355	0	0	0	0.0	0.0	0.0	0	0	1.000
DMC	938	6073	0	0	0	0.0	0.0	0.0	0	0	3.000
DMC	955	712	0	0	0	0.0	0.0	0.0	0	0	1.000
DMC	976	3616	0	0	0	0.0	0.0	0.0	0	0	2.000
DMC	3031	313	0	0	0	0.0	0.0	0.0	0	0	1.000
DMC	3046	718	0	0	0	0.0	0.0	0.0	0	0	1.000
DMC	3348	1009	0	0	0	0.0	0.0	0.0	0	0	1.000
DMC	3776	55	0	0	0	0.0	0.0	0.0	0	0	1.000
DMC	3808	735	0	0	0	0.0	0.0	0.0	0	0	1.000
DMC	3809	145	0	0	0	0.0	0.0	0.0	0	0	1.000
DMC	3812	195	0	0	0	0.0	0.0	0.0	0	0	1.000
DMC	3814	559	0	0	0	0.0	0.0	0.0	0	0	1.000
DMC	3816	602	0	0	0	0.0	0.0	0.0	0	0	1.000
DMC	3819	975	0	0	0	0.0	0.0	0.0	0	0	1.000
DMC	3820	3000	0	0	0	0.0	0.0	0.0	0	0	2.000
DMC	3821	1770	0	0	0	0.0	0.0	0.0	0	0	1.000
DMC	3822	2517	0	0	0	0.0	0.0	0.0	0	0	2.000
DMC	3823	2754	0	0	0	0.0	0.0	0.0	0	0	2.000
DMC	3852	2753	0	0	0	0.0	0.0	0.0	0	0	2.000
DMC	3864	304	0	0	0	0.0	0.0	0.0	0	0	1.000