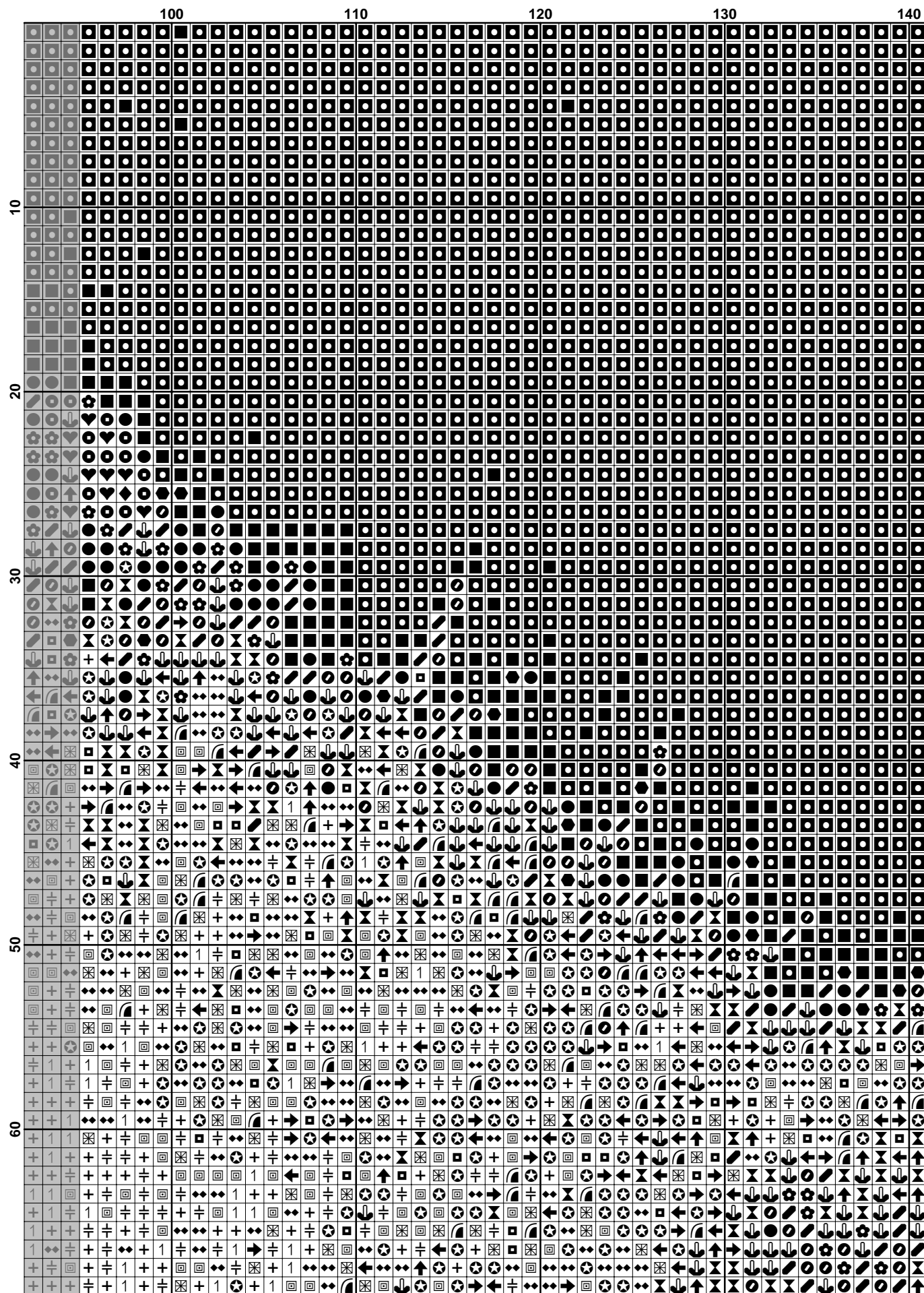
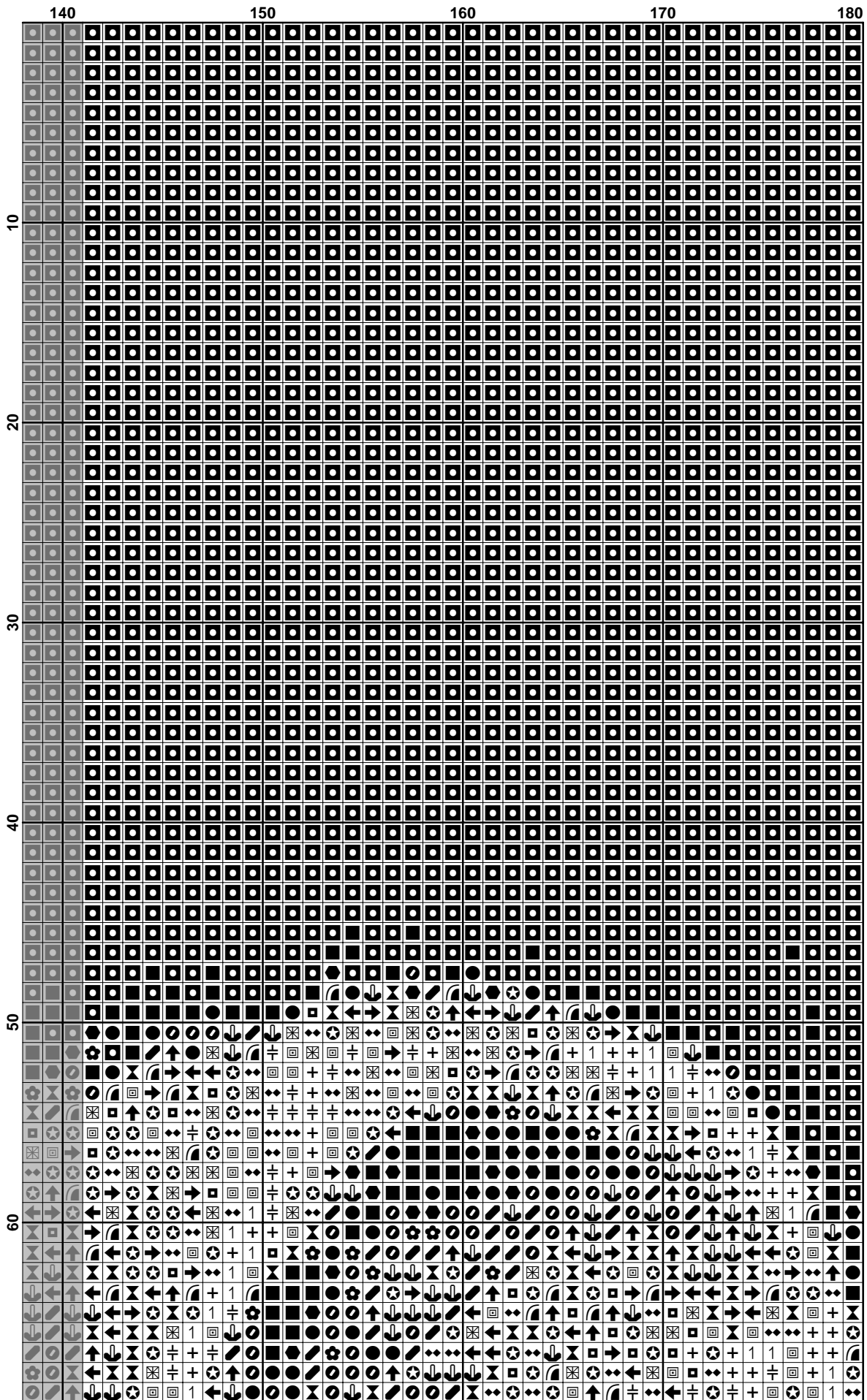


	50	60	70	80	90
10	+	+	+	+	+
20	+	+	+	+	+
30	+	+	+	+	+
40	+	+	+	+	+
50	+	+	+	+	+
60	+	+	+	+	+

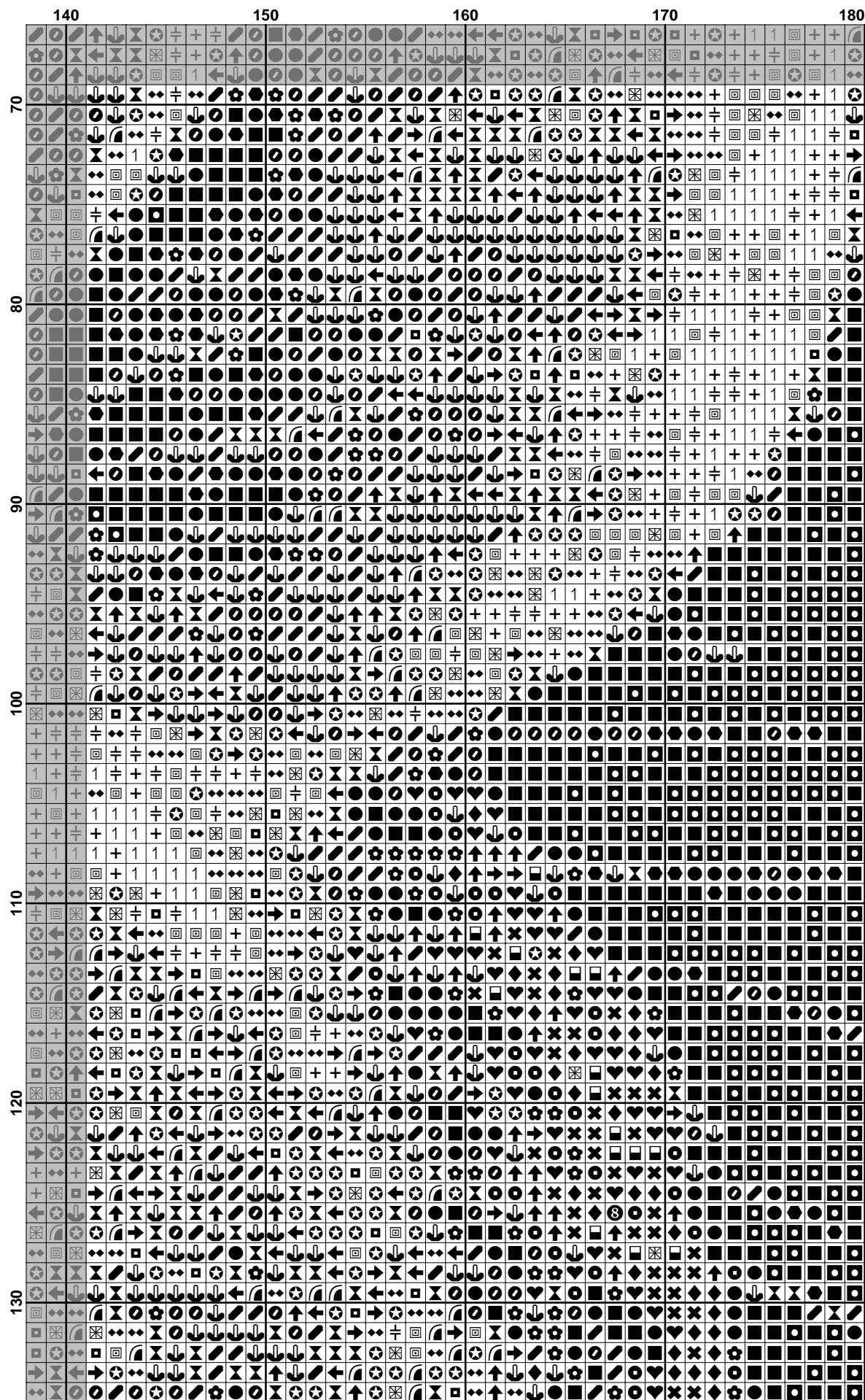




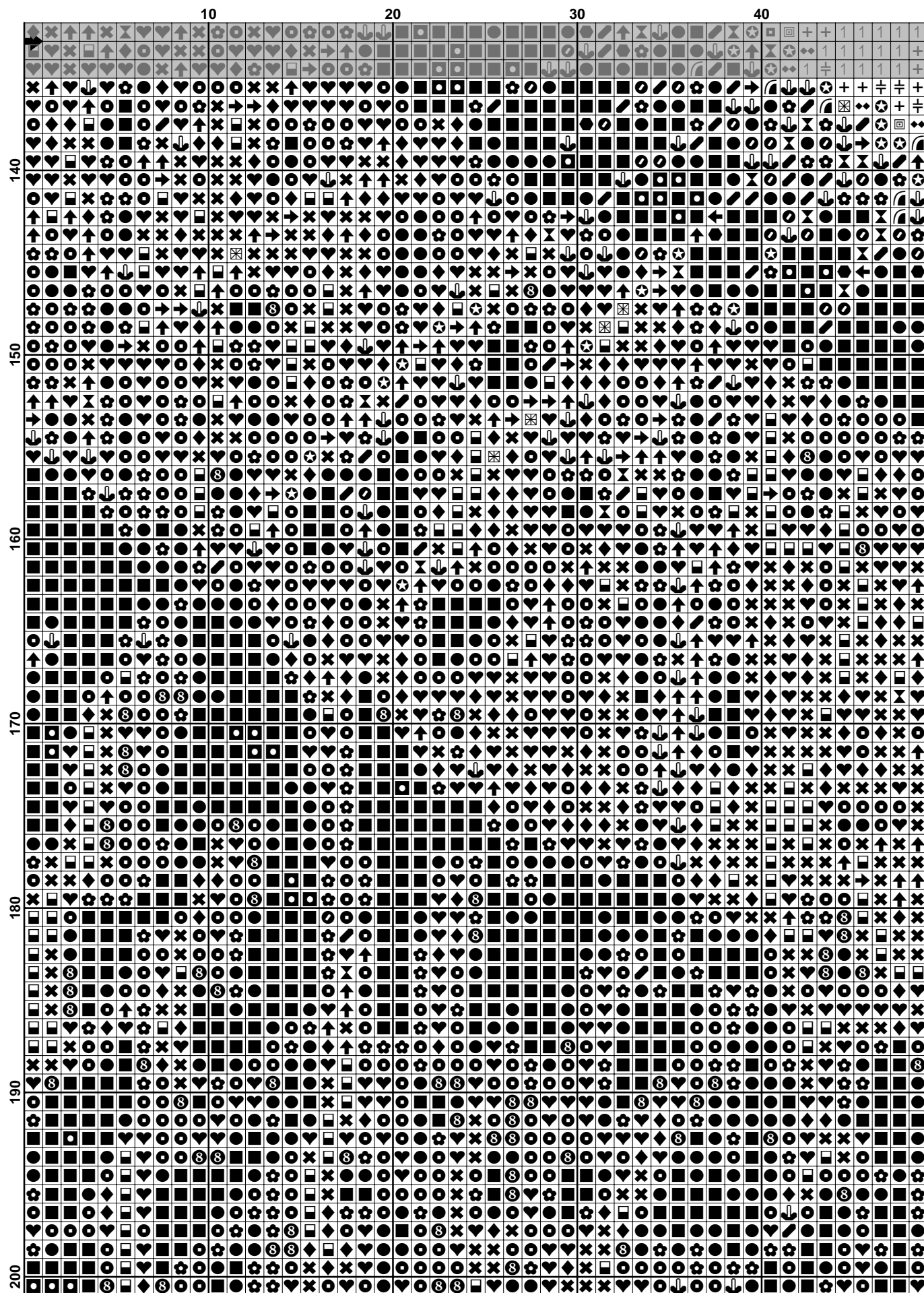
	10	20	30	40
70	⊗	⊗	⊗	⊗
71	⊗	⊗	⊗	⊗
72	⊗	⊗	⊗	⊗
73	⊗	⊗	⊗	⊗
74	⊗	⊗	⊗	⊗
75	⊗	⊗	⊗	⊗
76	⊗	⊗	⊗	⊗
77	⊗	⊗	⊗	⊗
78	⊗	⊗	⊗	⊗
79	⊗	⊗	⊗	⊗
80	⊗	⊗	⊗	⊗
81	⊗	⊗	⊗	⊗
82	⊗	⊗	⊗	⊗
83	⊗	⊗	⊗	⊗
84	⊗	⊗	⊗	⊗
85	⊗	⊗	⊗	⊗
86	⊗	⊗	⊗	⊗
87	⊗	⊗	⊗	⊗
88	⊗	⊗	⊗	⊗
89	⊗	⊗	⊗	⊗
90	⊗	⊗	⊗	⊗
91	⊗	⊗	⊗	⊗
92	⊗	⊗	⊗	⊗
93	⊗	⊗	⊗	⊗
94	⊗	⊗	⊗	⊗
95	⊗	⊗	⊗	⊗
96	⊗	⊗	⊗	⊗
97	⊗	⊗	⊗	⊗
98	⊗	⊗	⊗	⊗
99	⊗	⊗	⊗	⊗
100	⊗	⊗	⊗	⊗
101	⊗	⊗	⊗	⊗
102	⊗	⊗	⊗	⊗
103	⊗	⊗	⊗	⊗
104	⊗	⊗	⊗	⊗
105	⊗	⊗	⊗	⊗
106	⊗	⊗	⊗	⊗
107	⊗	⊗	⊗	⊗
108	⊗	⊗	⊗	⊗
109	⊗	⊗	⊗	⊗
110	⊗	⊗	⊗	⊗
111	⊗	⊗	⊗	⊗
112	⊗	⊗	⊗	⊗
113	⊗	⊗	⊗	⊗
114	⊗	⊗	⊗	⊗
115	⊗	⊗	⊗	⊗
116	⊗	⊗	⊗	⊗
117	⊗	⊗	⊗	⊗
118	⊗	⊗	⊗	⊗
119	⊗	⊗	⊗	⊗
120	⊗	⊗	⊗	⊗
121	⊗	⊗	⊗	⊗
122	⊗	⊗	⊗	⊗
123	⊗	⊗	⊗	⊗
124	⊗	⊗	⊗	⊗
125	⊗	⊗	⊗	⊗
126	⊗	⊗	⊗	⊗
127	⊗	⊗	⊗	⊗
128	⊗	⊗	⊗	⊗
129	⊗	⊗	⊗	⊗
130	⊗	⊗	⊗	⊗

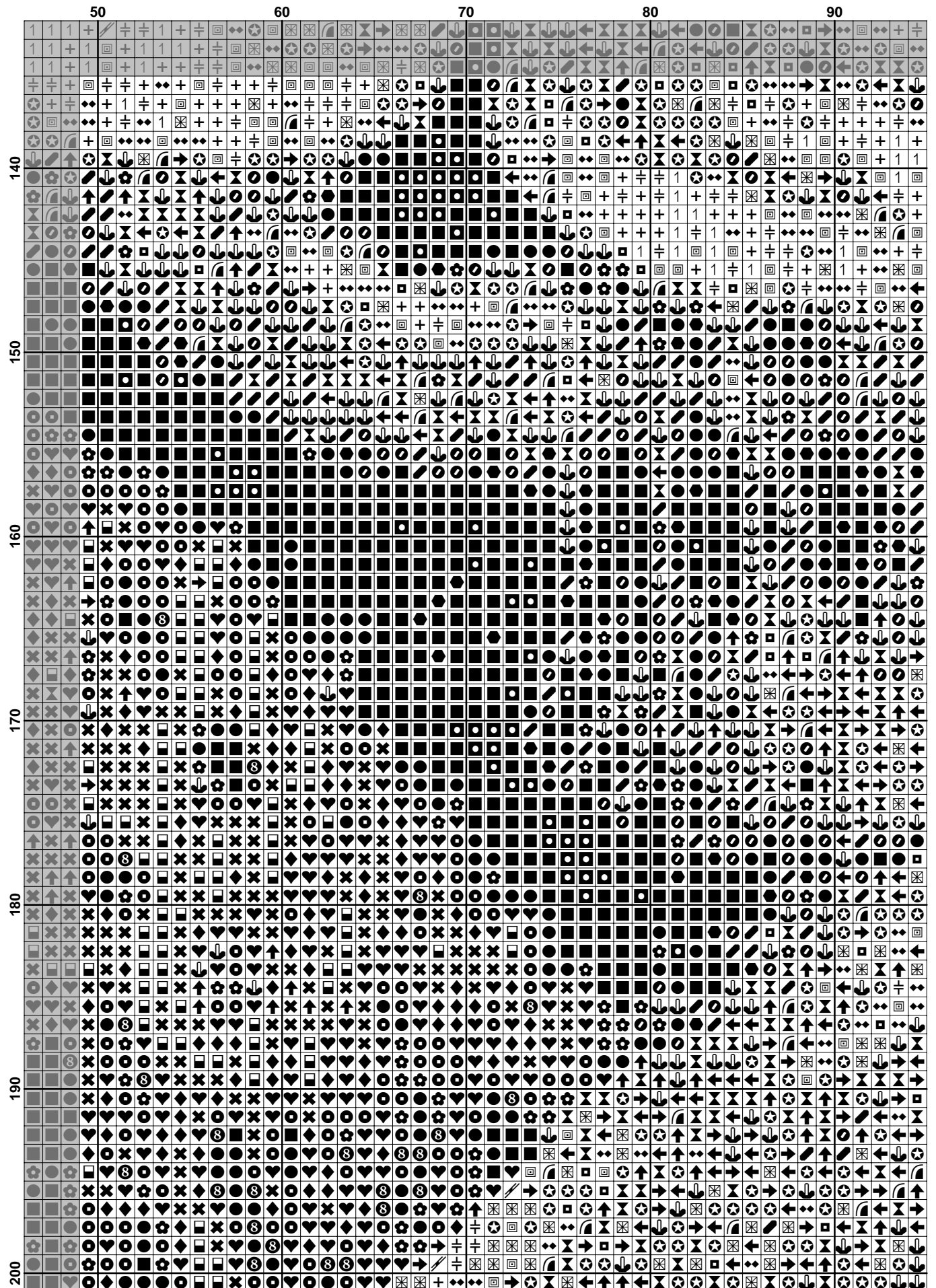




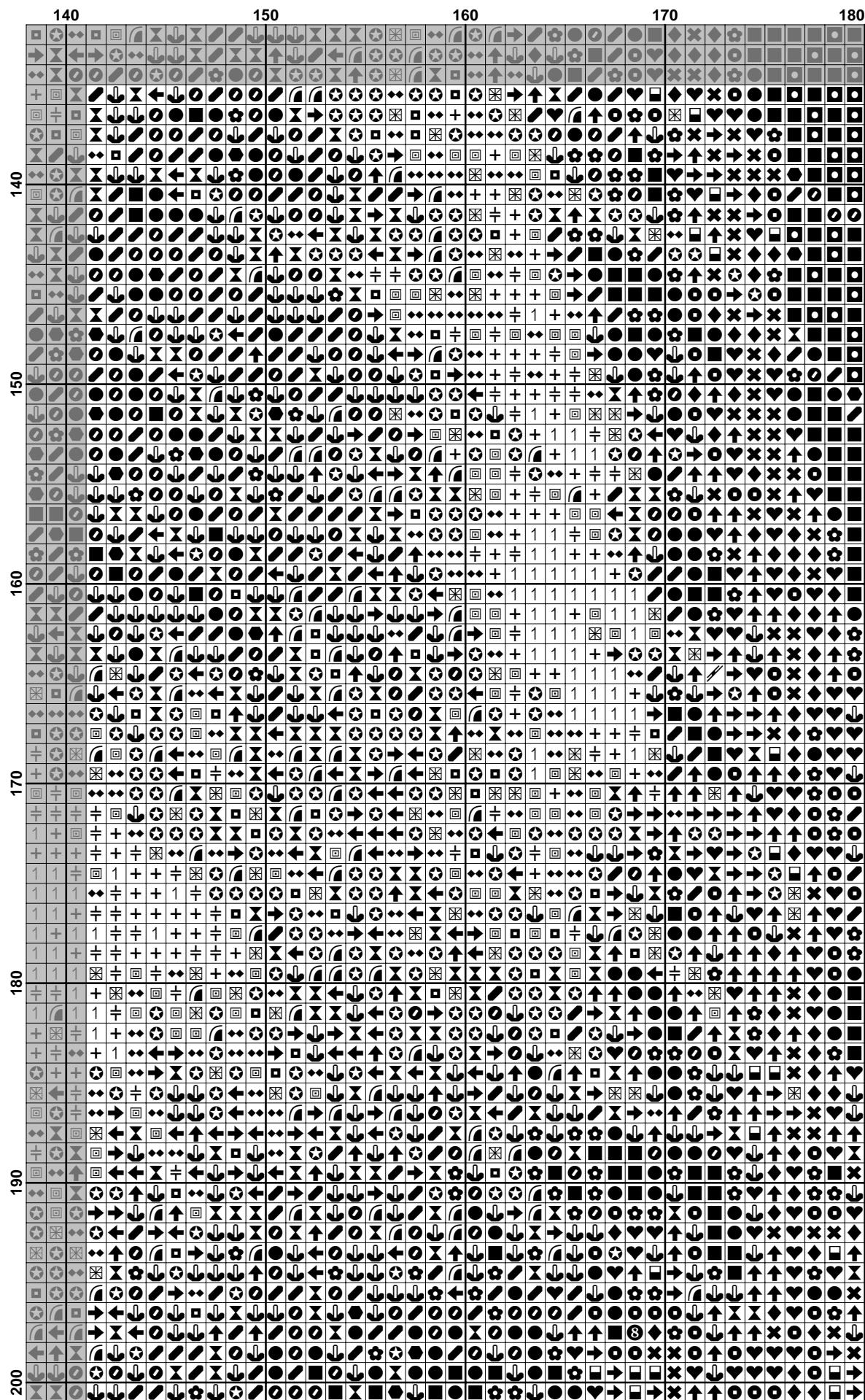


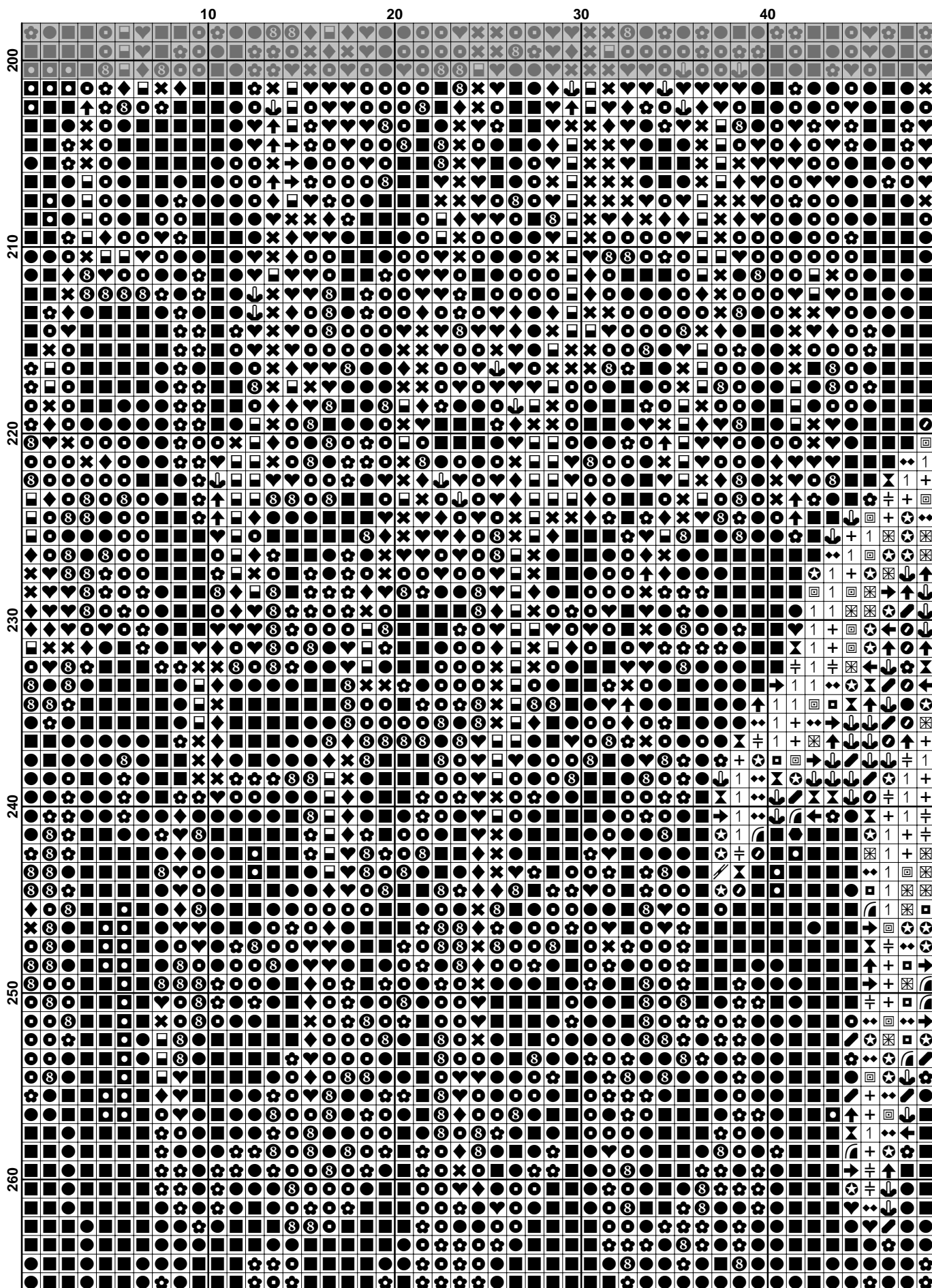


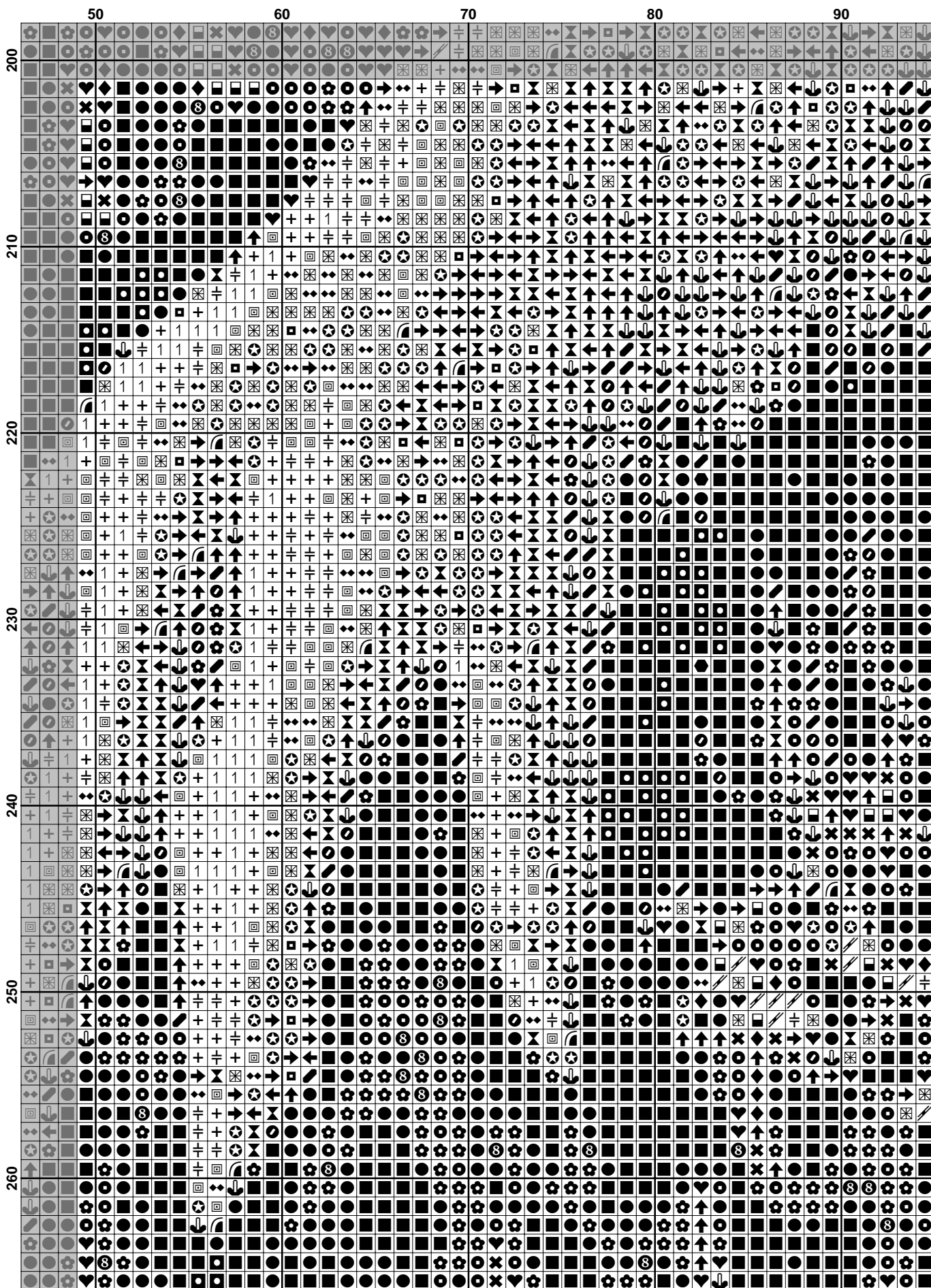


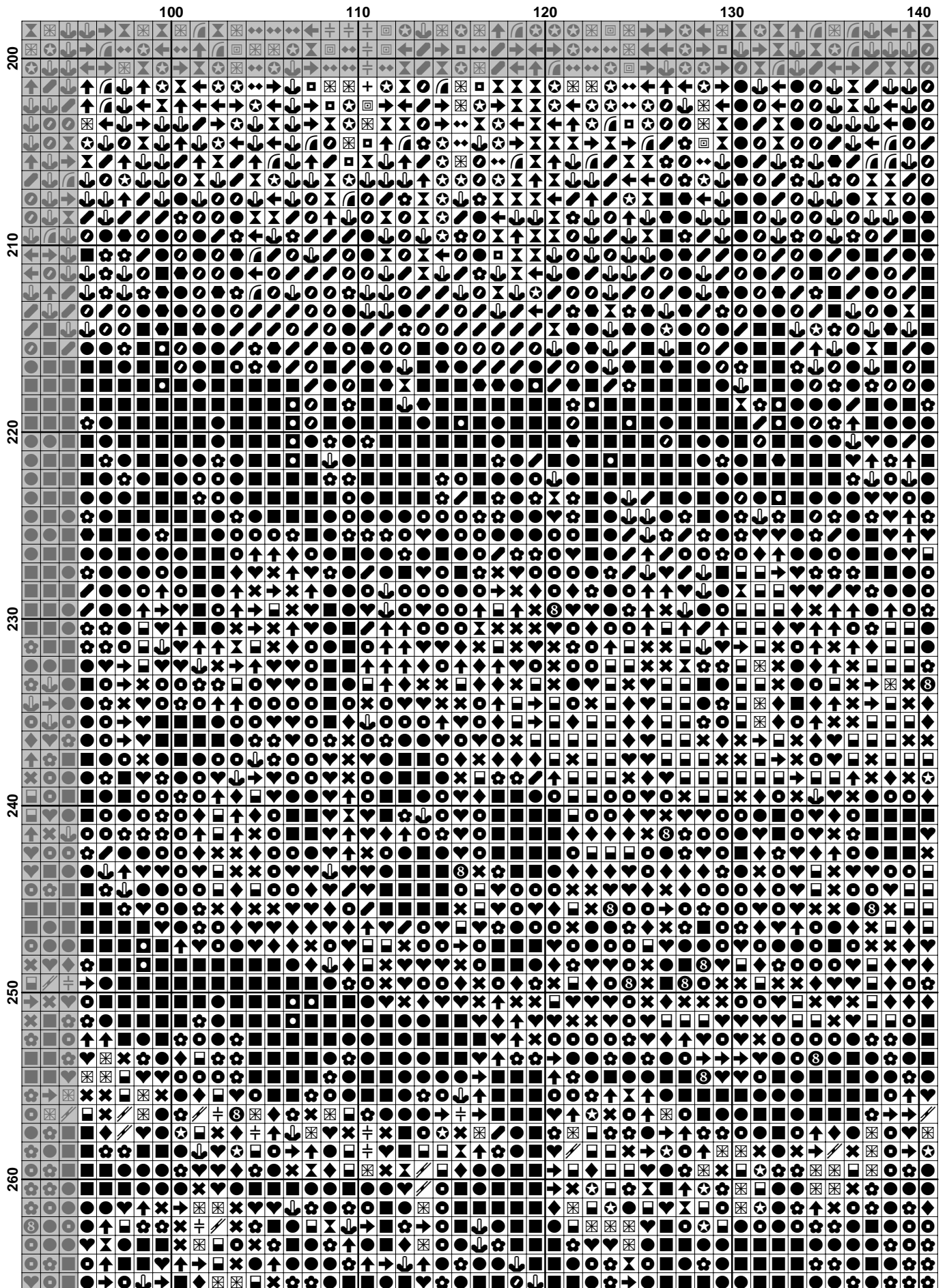


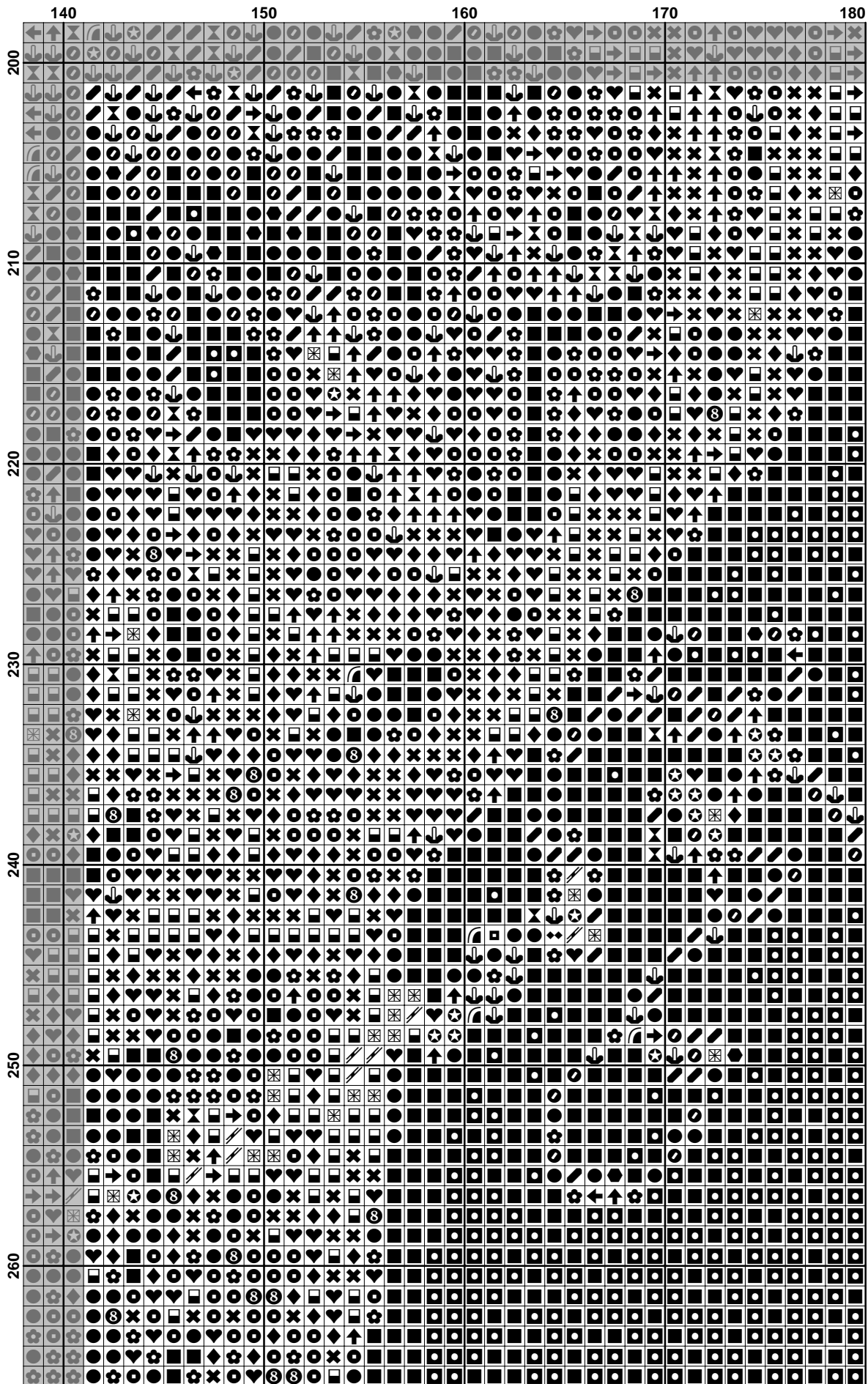










































**Pattern Name:** Potkánek  
**Designed By:** J.Krömerová  
**Company:** vysivani-krizkem.wz.cz  
**Copyright:** Copyright art 2012  
**Fabric:** Aida 14, White  
 180w X 266h Stitches  
**Size(s):** 14 Count, 32.66w X 48.26h cm  
 18 Count, 25.40w X 37.54h cm  
 22 Count, 20.78w X 30.71h cm

**Floss Used for Full Stitches:**

Symbol	Strands	Type	Number	Color
	2	DMC	158	Cornflower Blue-MD VY DK
	2	DMC	159	Gray Blue-LT
	2	DMC	160	Gray Blue-MD
	2	DMC	161	Gray Blue
	2	DMC	169	Pewter-LT
	2	DMC	211	Lavender-LT
	2	DMC	310	Black
	2	DMC	317	Pewter Gray
	2	DMC	318	Steel Gray-LT
	2	DMC	333	Blue Violet-VY DK
	2	DMC	336	Navy Blue
	2	DMC	413	Pewter Gray-DK
	2	DMC	414	Steel Gray-DK
	2	DMC	415	Pearl Gray
	2	DMC	500	Blue Green-VY DK
	2	DMC	791	Cornflower Blue-VY DK
	2	DMC	792	Cornflower Blue-DK
	2	DMC	796	Royal Blue-DK
	2	DMC	823	Navy Blue-DK
	2	DMC	924	Gray Green--VY DK
	2	DMC	926	Gray Green-MD
	2	DMC	927	Gray Green-LT
	2	DMC	939	Navy Blue-VY DK
	2	DMC	3746	Blue Violet-DK
	2	DMC	3747	Blue Violet-VY LT
	2	DMC	3753	Antique Blue-UL VY LT
	2	DMC	3756	Baby Blue-UL VY LT
	2	DMC	3865	Winter White

**Usage Summary****Strands Per Skein:** 6**Skein Length:** 795.0 cm

Type	Number	Full	Half	Quarter	Petite	Back(cm)	Str(cm)	Spec(cm)	French	Bead	Skein Est.
DMC	158	1669	0	0	0	0.0	0.0	0.0	0	0	1.000
DMC	159	1426	0	0	0	0.0	0.0	0.0	0	0	1.000
DMC	160	1044	0	0	0	0.0	0.0	0.0	0	0	1.000
DMC	161	1084	0	0	0	0.0	0.0	0.0	0	0	1.000
DMC	169	710	0	0	0	0.0	0.0	0.0	0	0	1.000
DMC	211	44	0	0	0	0.0	0.0	0.0	0	0	1.000
DMC	310	5142	0	0	0	0.0	0.0	0.0	0	0	3.000
DMC	317	2318	0	0	0	0.0	0.0	0.0	0	0	1.000
DMC	318	2514	0	0	0	0.0	0.0	0.0	0	0	2.000
DMC	333	1278	0	0	0	0.0	0.0	0.0	0	0	1.000
DMC	336	1817	0	0	0	0.0	0.0	0.0	0	0	1.000
DMC	413	1351	0	0	0	0.0	0.0	0.0	0	0	1.000
DMC	414	1798	0	0	0	0.0	0.0	0.0	0	0	1.000
DMC	415	2052	0	0	0	0.0	0.0	0.0	0	0	1.000
DMC	500	348	0	0	0	0.0	0.0	0.0	0	0	1.000
DMC	791	2078	0	0	0	0.0	0.0	0.0	0	0	1.000
DMC	792	826	0	0	0	0.0	0.0	0.0	0	0	1.000
DMC	796	349	0	0	0	0.0	0.0	0.0	0	0	1.000
DMC	823	3182	0	0	0	0.0	0.0	0.0	0	0	2.000
DMC	924	1286	0	0	0	0.0	0.0	0.0	0	0	1.000
DMC	926	863	0	0	0	0.0	0.0	0.0	0	0	1.000
DMC	927	564	0	0	0	0.0	0.0	0.0	0	0	1.000
DMC	939	5446	0	0	0	0.0	0.0	0.0	0	0	3.000
DMC	3746	840	0	0	0	0.0	0.0	0.0	0	0	1.000
DMC	3747	1606	0	0	0	0.0	0.0	0.0	0	0	1.000
DMC	3753	1542	0	0	0	0.0	0.0	0.0	0	0	1.000
DMC	3756	2054	0	0	0	0.0	0.0	0.0	0	0	1.000
DMC	3865	2649	0	0	0	0.0	0.0	0.0	0	0	2.000