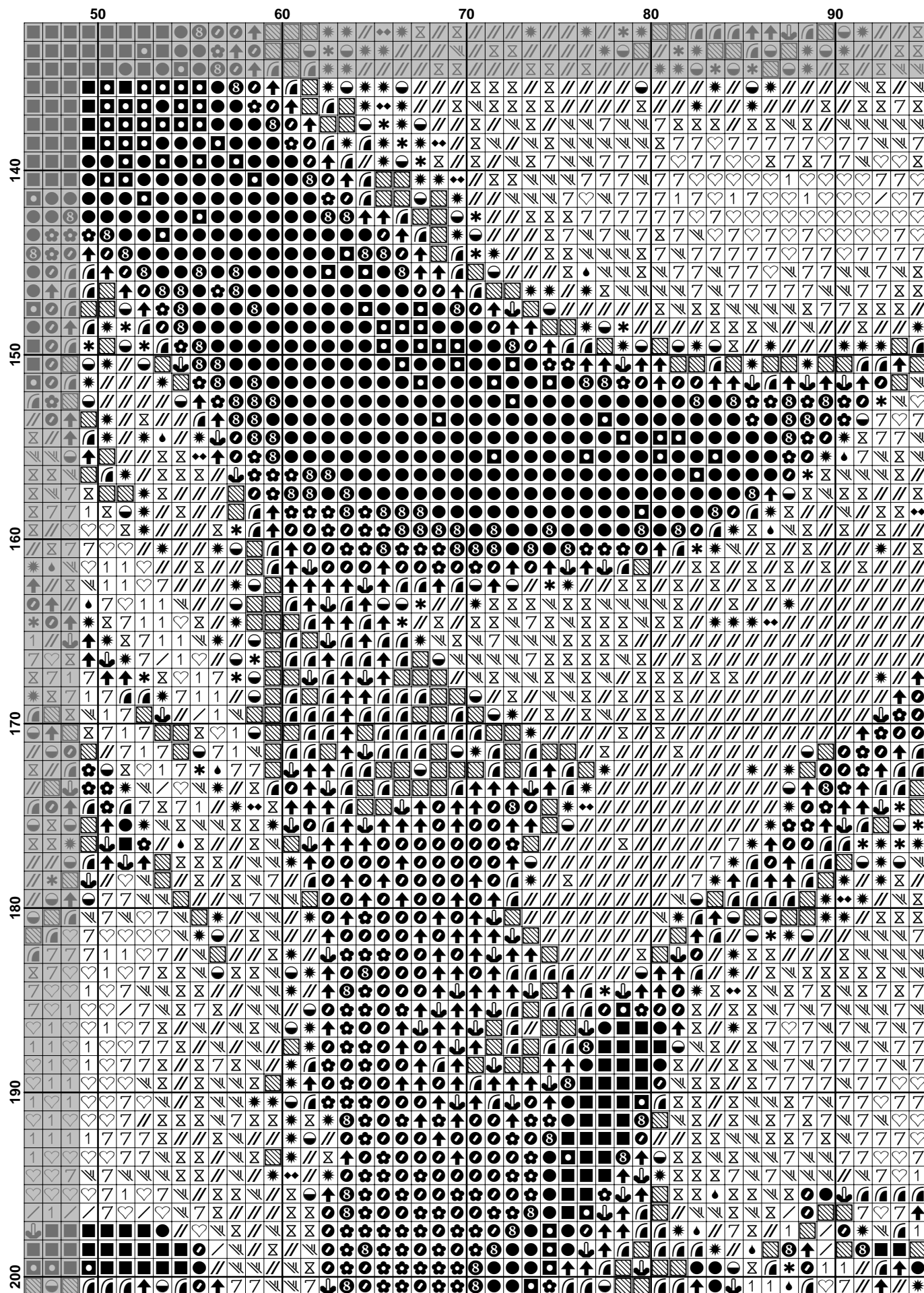
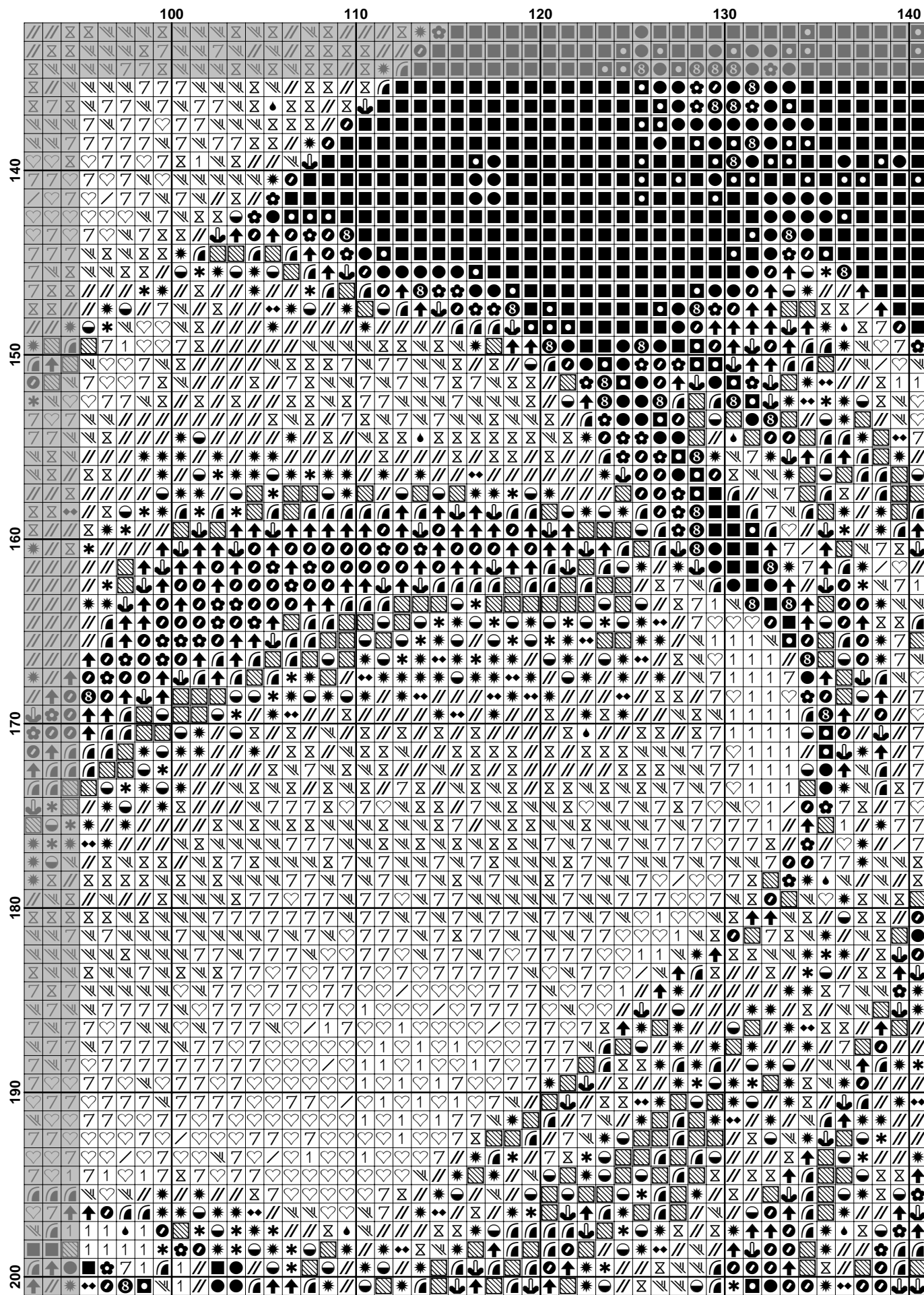
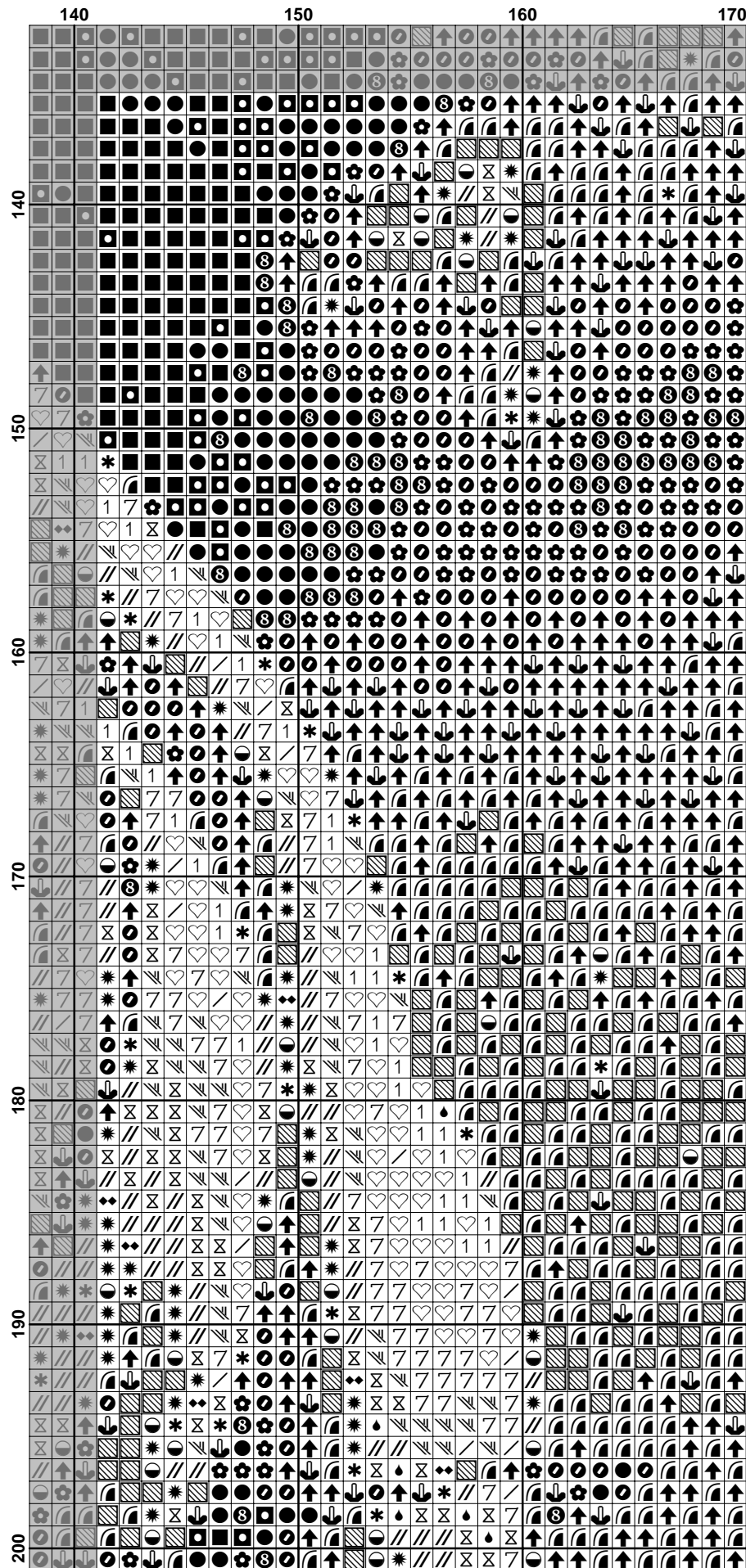
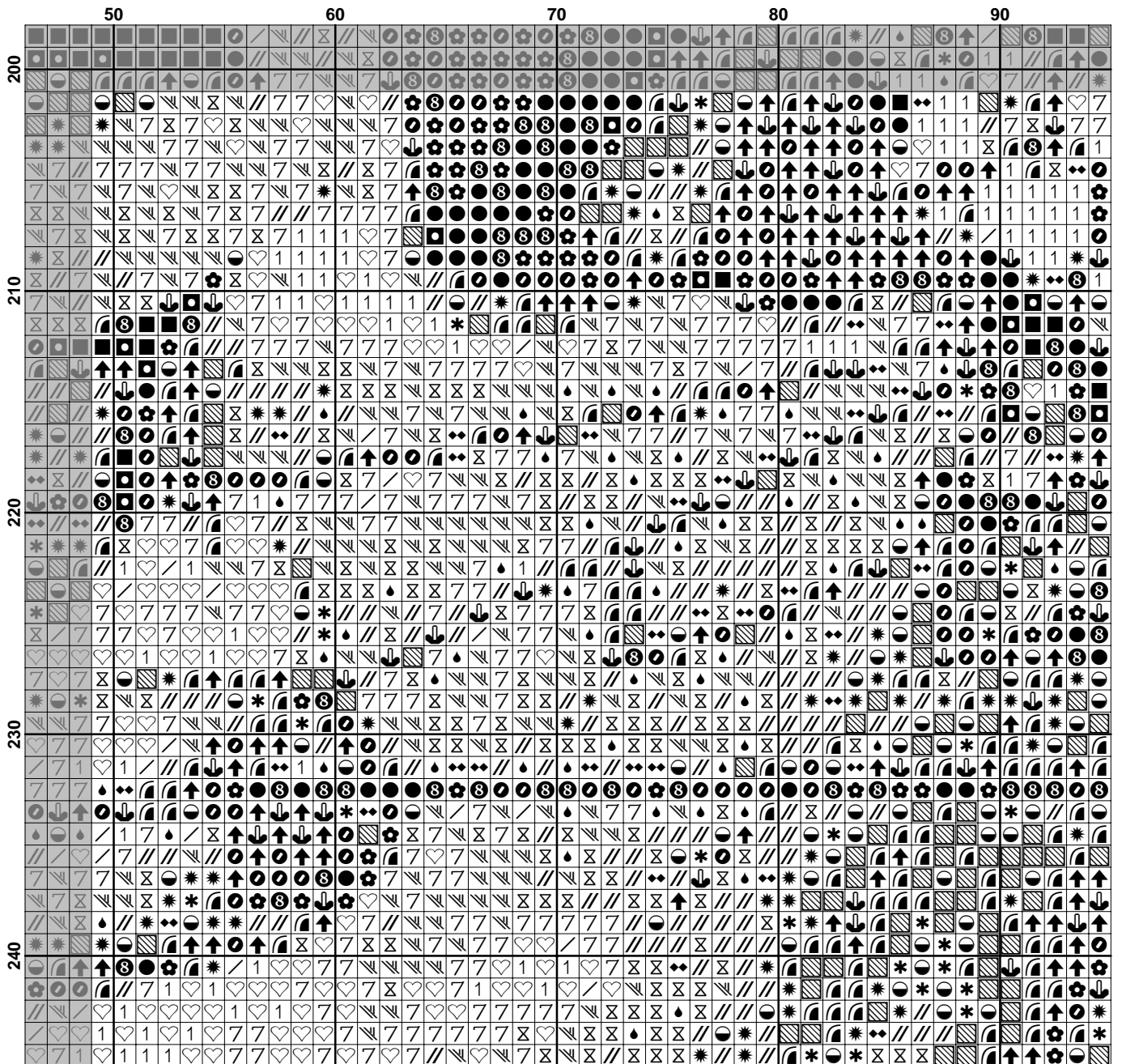


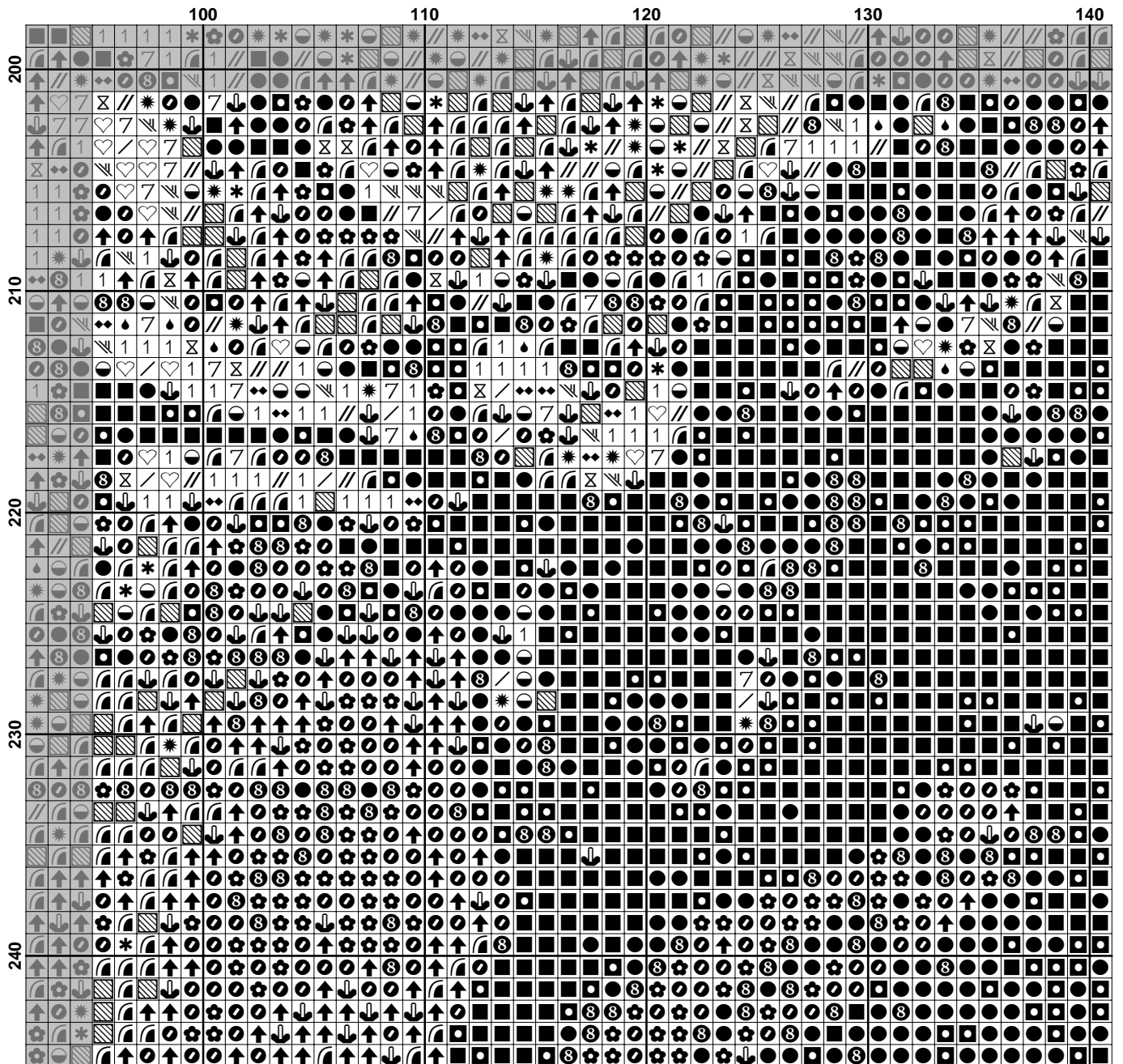
	10	20	30	40
140	☀	☀	☀	☀
141	☀	☀	☀	☀
142	☀	☀	☀	☀
143	☀	☀	☀	☀
144	☀	☀	☀	☀
145	☀	☀	☀	☀
146	☀	☀	☀	☀
147	☀	☀	☀	☀
148	☀	☀	☀	☀
149	☀	☀	☀	☀
150	☀	☀	☀	☀
151	☀	☀	☀	☀
152	☀	☀	☀	☀
153	☀	☀	☀	☀
154	☀	☀	☀	☀
155	☀	☀	☀	☀
156	☀	☀	☀	☀
157	☀	☀	☀	☀
158	☀	☀	☀	☀
159	☀	☀	☀	☀
160	☀	☀	☀	☀
161	☀	☀	☀	☀
162	☀	☀	☀	☀
163	☀	☀	☀	☀
164	☀	☀	☀	☀
165	☀	☀	☀	☀
166	☀	☀	☀	☀
167	☀	☀	☀	☀
168	☀	☀	☀	☀
169	☀	☀	☀	☀
170	☀	☀	☀	☀
171	☀	☀	☀	☀
172	☀	☀	☀	☀
173	☀	☀	☀	☀
174	☀	☀	☀	☀
175	☀	☀	☀	☀
176	☀	☀	☀	☀
177	☀	☀	☀	☀
178	☀	☀	☀	☀
179	☀	☀	☀	☀
180	☀	☀	☀	☀
181	☀	☀	☀	☀
182	☀	☀	☀	☀
183	☀	☀	☀	☀
184	☀	☀	☀	☀
185	☀	☀	☀	☀
186	☀	☀	☀	☀
187	☀	☀	☀	☀
188	☀	☀	☀	☀
189	☀	☀	☀	☀
190	☀	☀	☀	☀
191	☀	☀	☀	☀
192	☀	☀	☀	☀
193	☀	☀	☀	☀
194	☀	☀	☀	☀
195	☀	☀	☀	☀
196	☀	☀	☀	☀
197	☀	☀	☀	☀
198	☀	☀	☀	☀
199	☀	☀	☀	☀
200	☀	☀	☀	☀

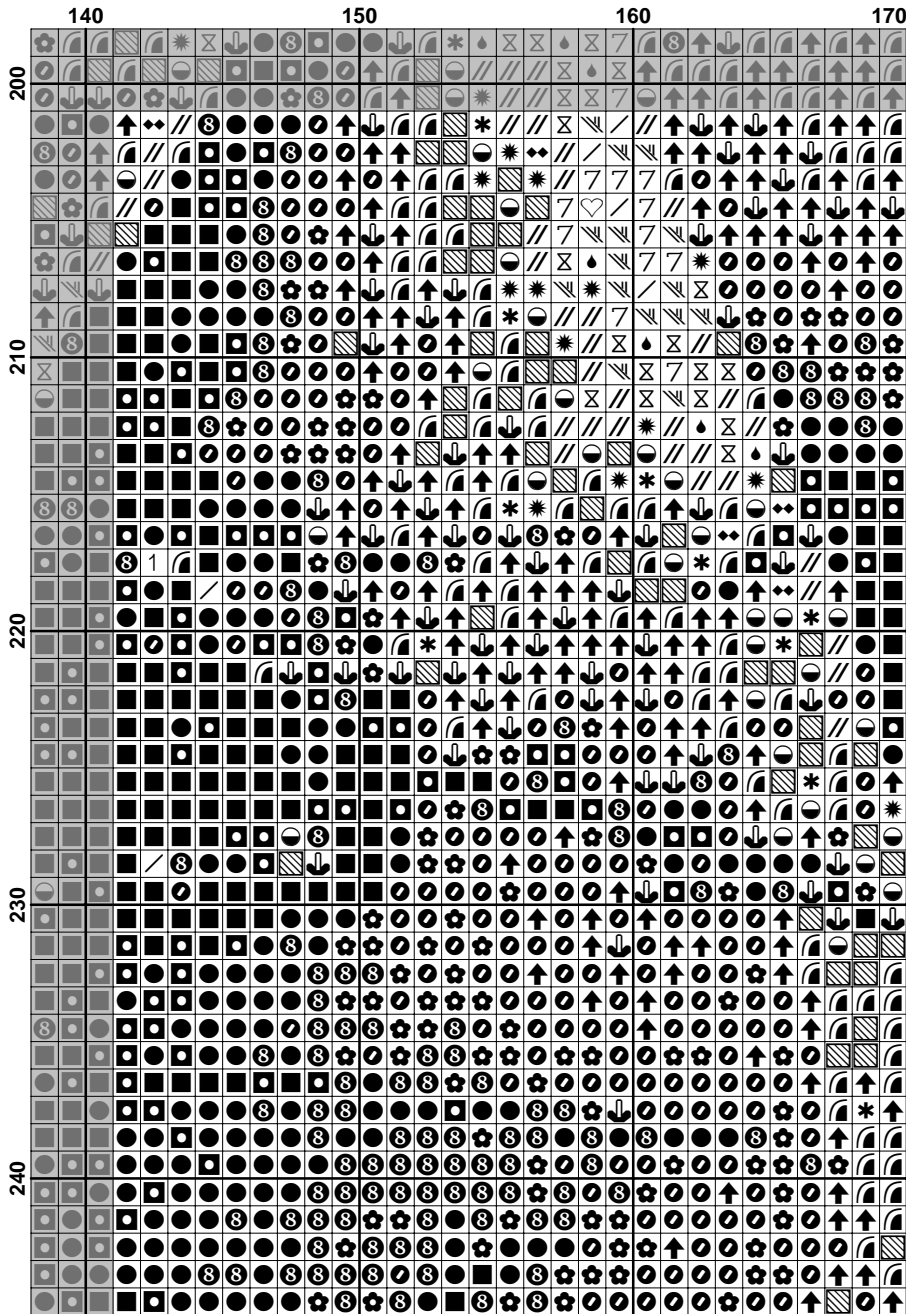


































Pattern Name: Zita Kabátová
Designed By: J.Krömerová
Company: vysivani-krizkem.wz.cz
Copyright: Copyright art 2012
Fabric: Aida 14, White
 170w X 245h Stitches
Size(s): 14 Count, 30.84w X 44.45h cm
 18 Count, 23.99w X 34.57h cm
 22 Count, 19.63w X 28.29h cm

Floss Used for Full Stitches:

Symbol	Strands	Type	Number	Color
	2	DMC	169	Pewter-LT
	2	DMC	310	Black
	2	DMC	317	Pewter Gray
	2	DMC	318	Steel Gray-LT
	2	DMC	413	Pewter Gray-DK
	2	DMC	414	Steel Gray-DK
	2	DMC	452	Shell Gray-MD
	2	DMC	453	Shell Gray-LT
	2	DMC	524	Fern Green-VY LT
	2	DMC	535	Ash Gray-VY LT
	2	DMC	646	Beaver Gray-DK
	2	DMC	647	Beaver Gray-MD
	2	DMC	648	Beaver Gray-LT
	2	DMC	762	Pearl Gray-VY LT
	2	DMC	927	Gray Green-LT
	2	DMC	928	Gray Green-VY LT
	2	DMC	934	Black Avocado Green
	2	DMC	3024	Brown Gray-VY LT
	2	DMC	3072	Beaver Gray-VY LT
	2	DMC	3799	Pewter Gray-VY DK
	2	DMC	3866	Mocha Brown-UL VY LT
	2	DMC	Ecru	Ecru

Usage Summary**Strands Per Skein:** 6**Skein Length:** 795.0 cm

Type	Number	Full	Half	Quarter	Petite	Back(cm)	Str(cm)	Spec(cm)	French	Bead	Skein Est.
DMC	169	2048	0	0	0	0.0	0.0	0.0	0	0	1.000
DMC	310	5842	0	0	0	0.0	0.0	0.0	0	0	3.000
DMC	317	1906	0	0	0	0.0	0.0	0.0	0	0	1.000
DMC	318	1362	0	0	0	0.0	0.0	0.0	0	0	1.000
DMC	413	1193	0	0	0	0.0	0.0	0.0	0	0	1.000
DMC	414	810	0	0	0	0.0	0.0	0.0	0	0	1.000
DMC	452	1790	0	0	0	0.0	0.0	0.0	0	0	1.000
DMC	453	2549	0	0	0	0.0	0.0	0.0	0	0	2.000
DMC	524	559	0	0	0	0.0	0.0	0.0	0	0	1.000
DMC	535	1258	0	0	0	0.0	0.0	0.0	0	0	1.000
DMC	646	1989	0	0	0	0.0	0.0	0.0	0	0	1.000
DMC	647	2141	0	0	0	0.0	0.0	0.0	0	0	1.000
DMC	648	3809	0	0	0	0.0	0.0	0.0	0	0	2.000
DMC	762	252	0	0	0	0.0	0.0	0.0	0	0	1.000
DMC	927	340	0	0	0	0.0	0.0	0.0	0	0	1.000
DMC	928	198	0	0	0	0.0	0.0	0.0	0	0	1.000
DMC	934	1833	0	0	0	0.0	0.0	0.0	0	0	1.000
DMC	3024	2880	0	0	0	0.0	0.0	0.0	0	0	2.000
DMC	3072	3366	0	0	0	0.0	0.0	0.0	0	0	2.000
DMC	3799	2504	0	0	0	0.0	0.0	0.0	0	0	2.000
DMC	3866	1800	0	0	0	0.0	0.0	0.0	0	0	1.000
DMC	Ecru	1221	0	0	0	0.0	0.0	0.0	0	0	1.000